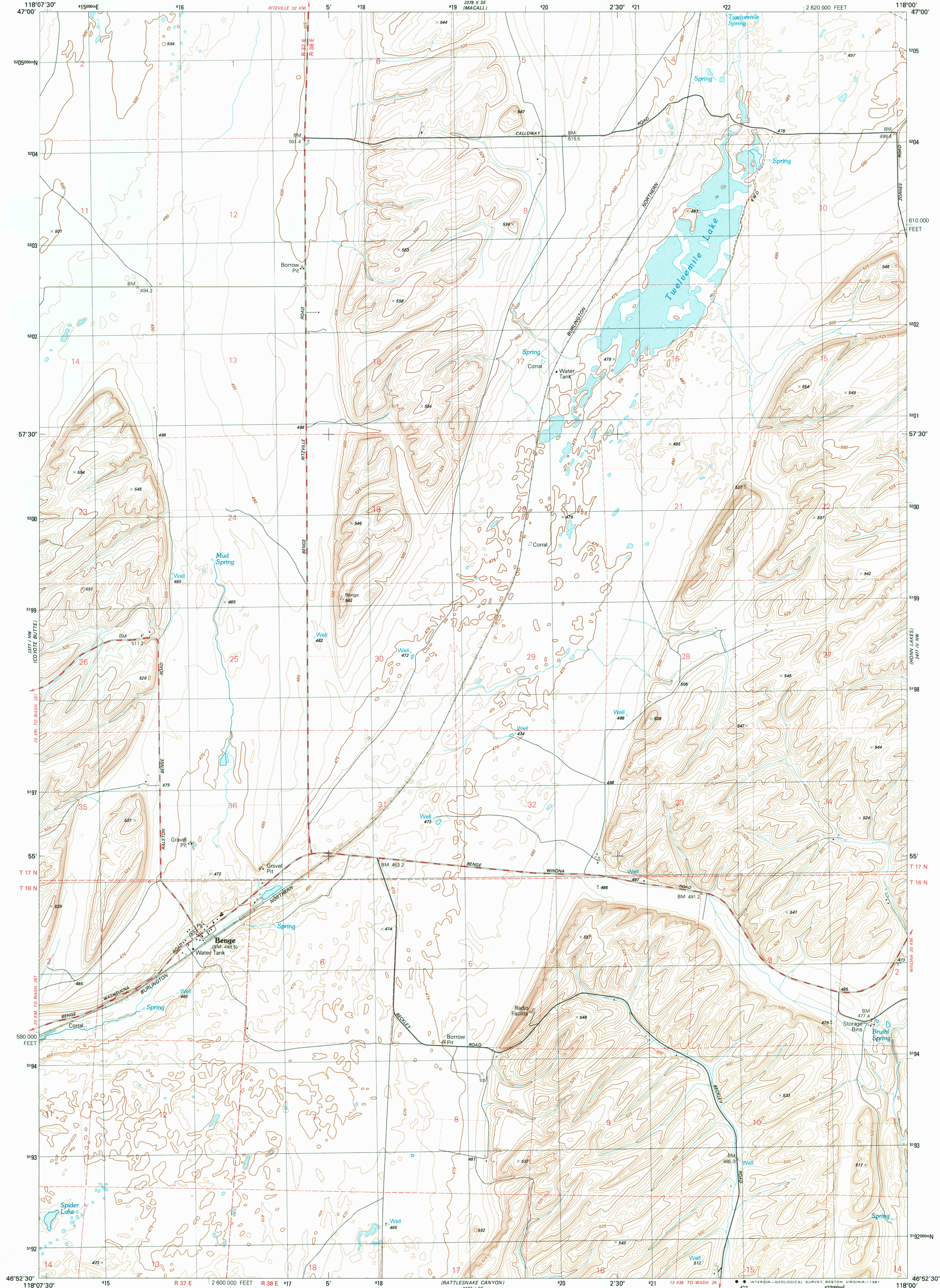
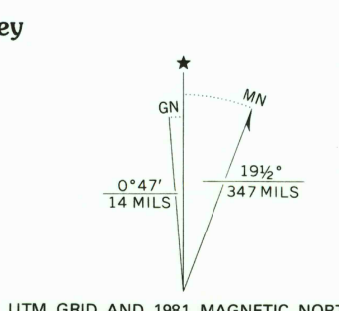


UNITED STATES
DEPARTMENT OF THE INTERIOR
GEOLOGICAL SURVEY

BENGE QUADRANGLE
WASHINGTON-ADAMS CO.
7.5 MINUTE SERIES (TOPOGRAPHIC)
NE/4 BENGE 15' QUADRANGLE



Produced by the United States Geological Survey
Control by USGS and NOS/NOAA
Compiled by photogrammetric methods from aerial
photographs taken 1975. Field checked 1976
Map edited 1981
Projection and 1000-meter grid, zone 11,
Universal Transverse Mercator
10,000-foot grid ticks based on Washington coordinate
system, south zone - 1927 North American Datum
To place on the predicted North American Datum 1983
move the projection lines 17 meters north and
82 meters east as shown by dashed corner ticks
Fine red dashed lines indicate selected fence and field lines
where generally visible on aerial photographs
This information is unchecked



SCALE 1:24 000
KILOMETERS
METERS
MILES
CONTOUR INTERVAL, 5 METERS
NATIONAL GEODETIC DATUM OF 1929

ROAD CLASSIFICATION
Primary highway,
hard surface
Secondary highway,
hard surface
Unimproved road ..
Interstate Route U. S. Route State Route



CONTOURS AND ELEVATIONS
IN METERS

BENGE, WASH.
NE/4 BENGE 15' QUADRANGLE
N4652.5-W11800/7.5

1981

DMA 2377 I NE-SERIES V891

AUG 13 1981
USGS
HISTORICAL FILE
NATIONAL MAPPING DIVISION
2000