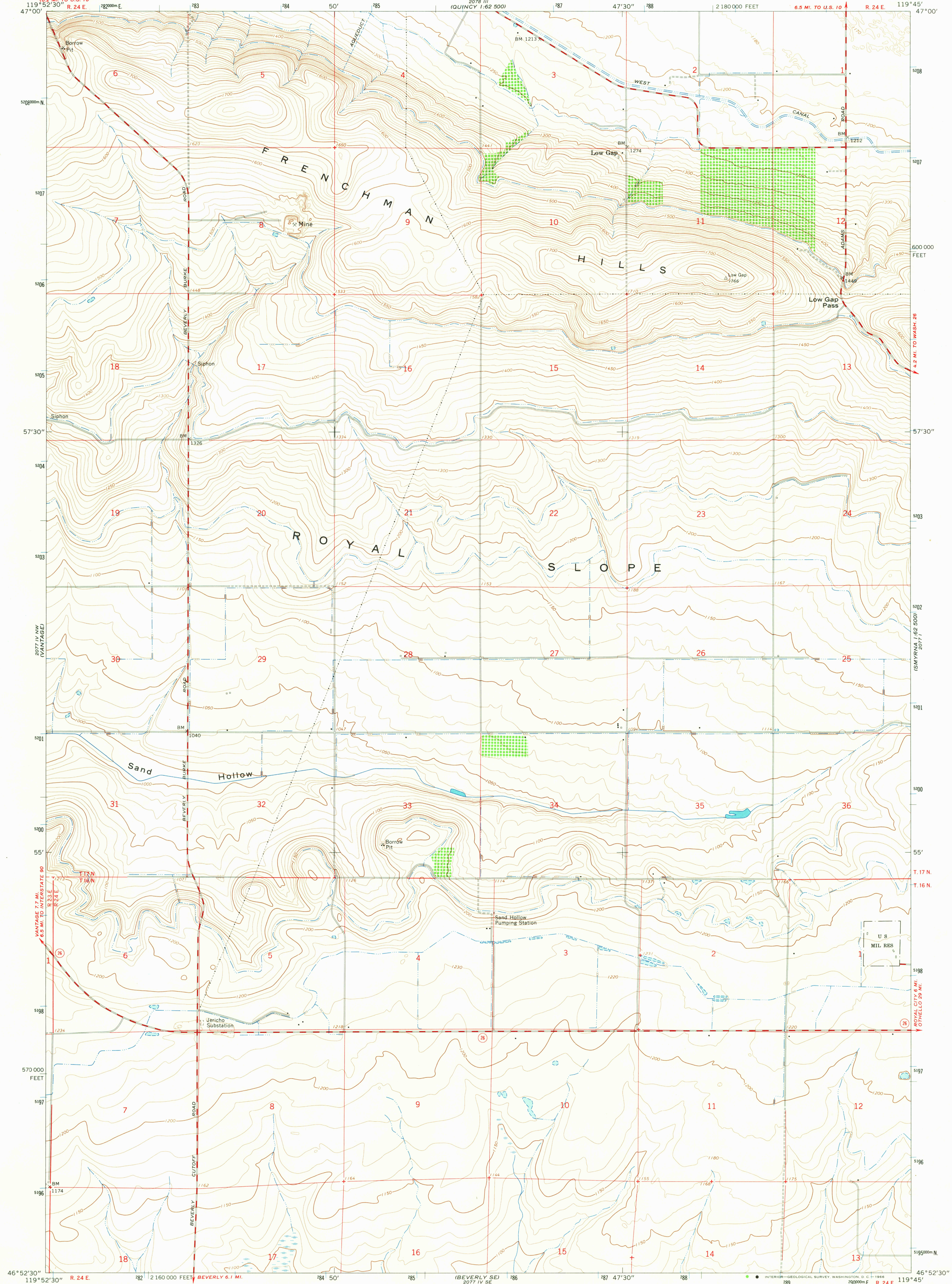
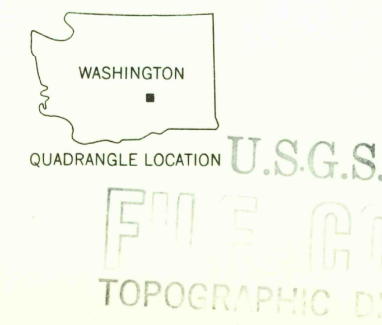
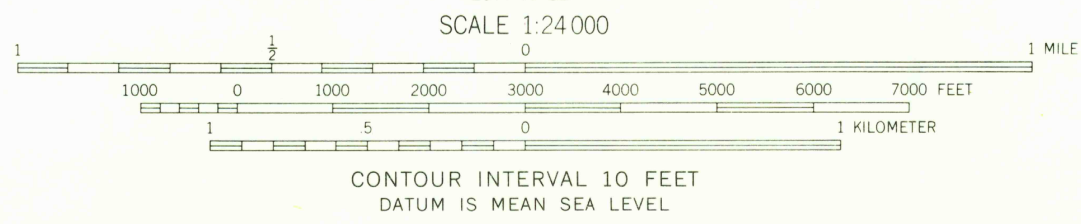
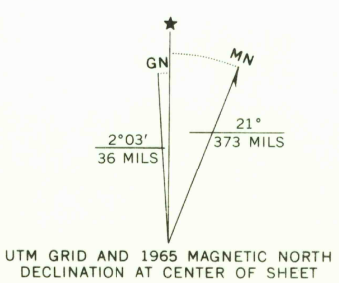


UNITED STATES
DEPARTMENT OF THE INTERIOR
GEOLOGICAL SURVEY

BEVERLY NE QUADRANGLE
WASHINGTON—GRANT CO.
7.5 MINUTE SERIES (TOPOGRAPHIC)
NE/4 BEVERLY 15' QUADRANGLE



Mapped, edited, and published by the Geological Survey
Control by USGS, USC&GS, and U. S. Bureau of Reclamation
Planimetry by photogrammetric methods from aerial
photographs taken 1953. Topography from planetable
surveys by USBR 1939-44. Revised from aerial
photographs taken 1964. Field checked 1965
Polyconic projection. 1927 North American datum
10,000-foot grid based on Washington coordinate system,
south zone
1000-meter Universal Transverse Mercator grid ticks,
zone 11, shown in blue
Elevations at section corners are for top of marker



ROAD CLASSIFICATION
Medium-duty — Light-duty
Unimproved dirt — State Route

BEVERLY NE, WASH.
NE/4 BEVERLY 15' QUADRANGLE
N4652.5—W11945.7.5

1965
AMS 2077 IV NE—SERIES V991

THIS MAP COMPLIES WITH NATIONAL MAP ACCURACY STANDARDS
FOR SALE BY U.S. GEOLOGICAL SURVEY, DENVER, COLORADO 80225, OR WASHINGTON, D.C. 20242
A FOLDER DESCRIBING TOPOGRAPHIC MAPS AND SYMBOLS IS AVAILABLE ON REQUEST

USGS
Historical File
Topographic Division