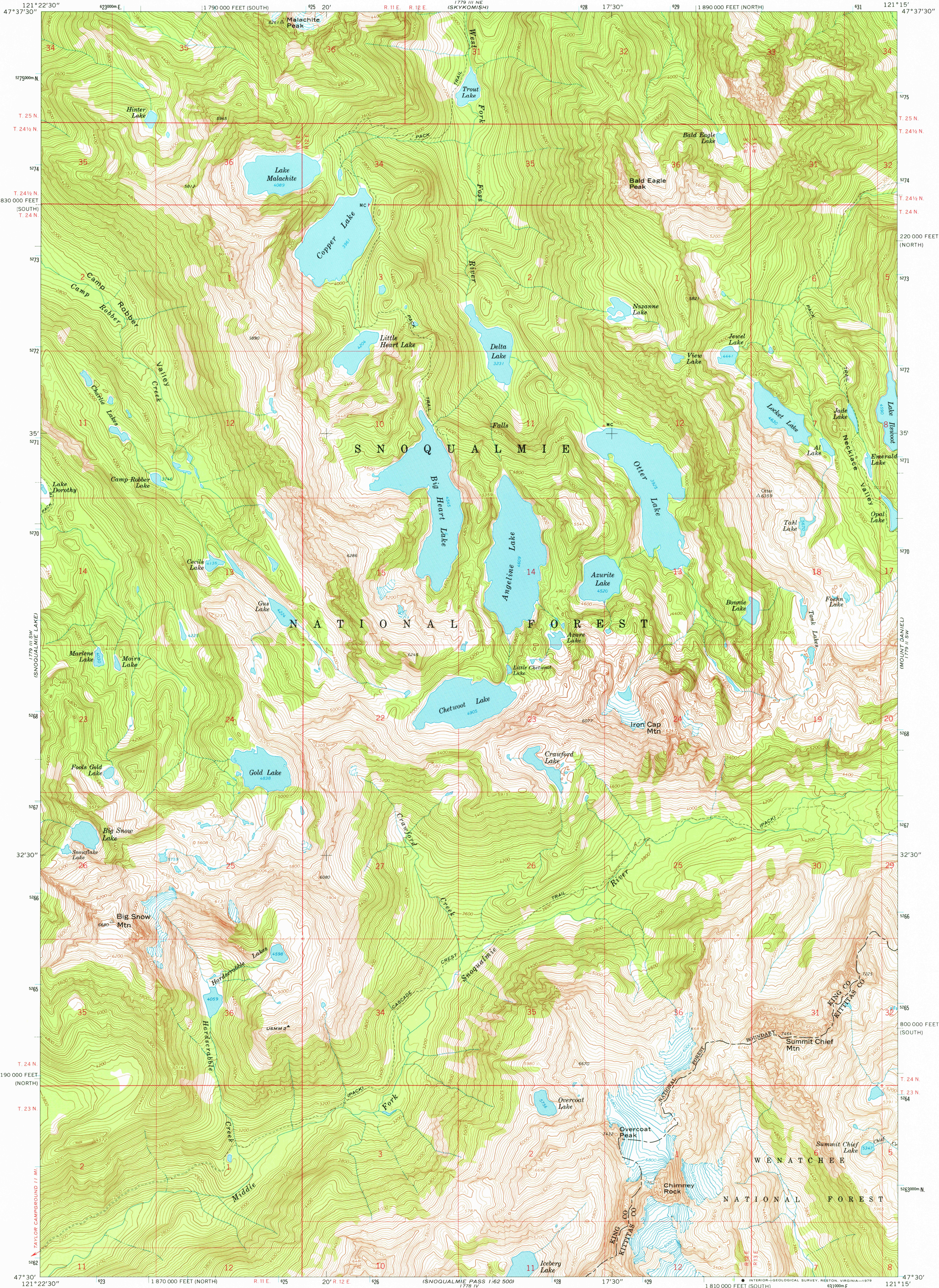


1779 III SW
(SNOQUALMIE LAKE)

UNITED STATES
DEPARTMENT OF THE INTERIOR
GEOLOGICAL SURVEY

BIG SNOW MTN. QUADRANGLE
WASHINGTON
7.5 MINUTE SERIES (TOPOGRAPHIC)

1779 III NW
(ICEBERG LAKE)



Mapped, edited, and published by the Geological Survey

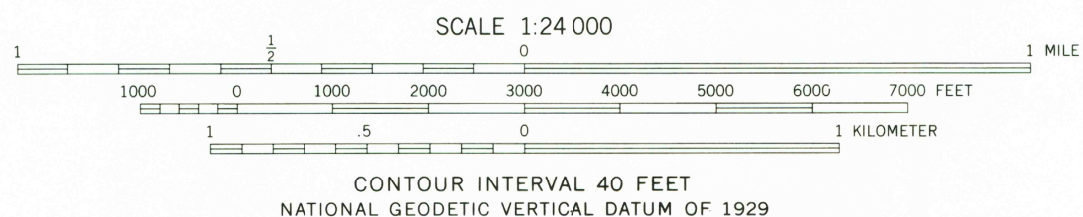
Control by USGS and USC&GS

Topography by photogrammetric methods from aerial photographs taken 1958. Field checked 1965

Polyconic projection. 1927 North American datum

10,000-foot grids based on Washington coordinate system, north and south zones

1000-meter Universal Transverse Mercator grid ticks, zone 10, shown in blue



FOR SALE BY U. S. GEOLOGICAL SURVEY, DENVER, COLORADO 80225, OR RESTON, VIRGINIA 22092
A FOLDER DESCRIBING TOPOGRAPHIC MAPS AND SYMBOLS IS AVAILABLE ON REQUEST



USGS
Historical File
Topographic Division

BIG SNOW MTN., WASH.
N4730—W12115/7.5

1965

AMS 1779 III SE—SERIES V891

JUL 18 1979

11,400