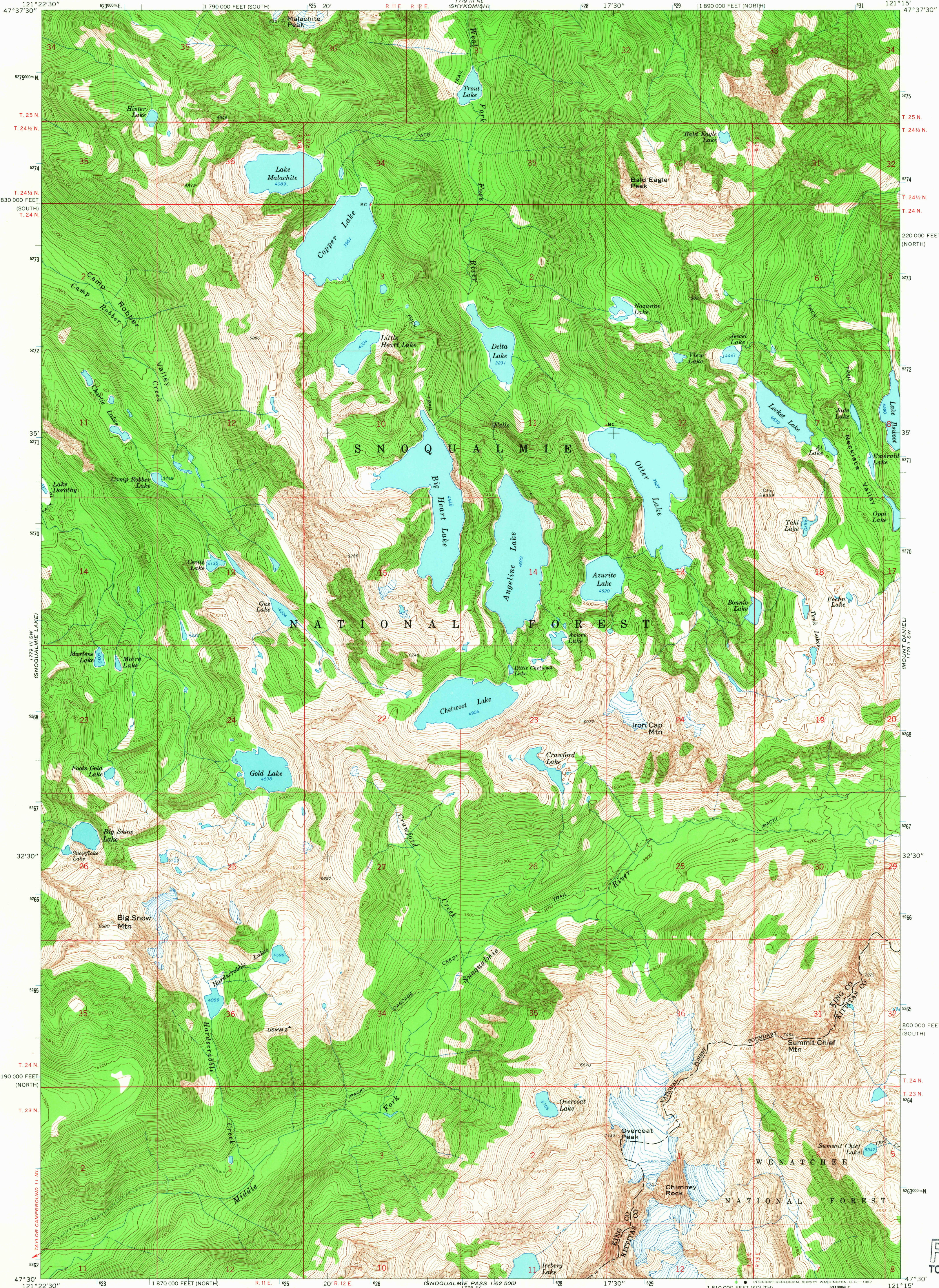


1779 III SW
(SNOQUALMIE PASS)

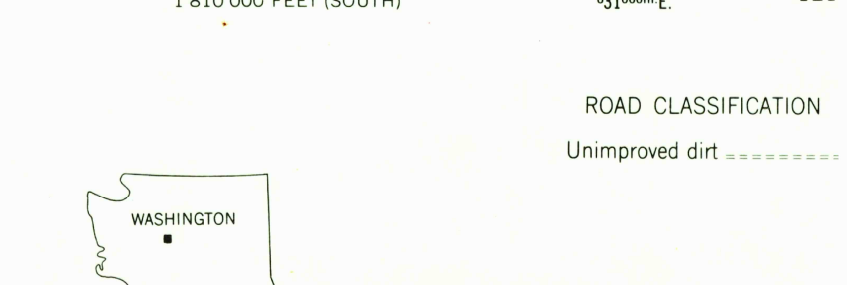
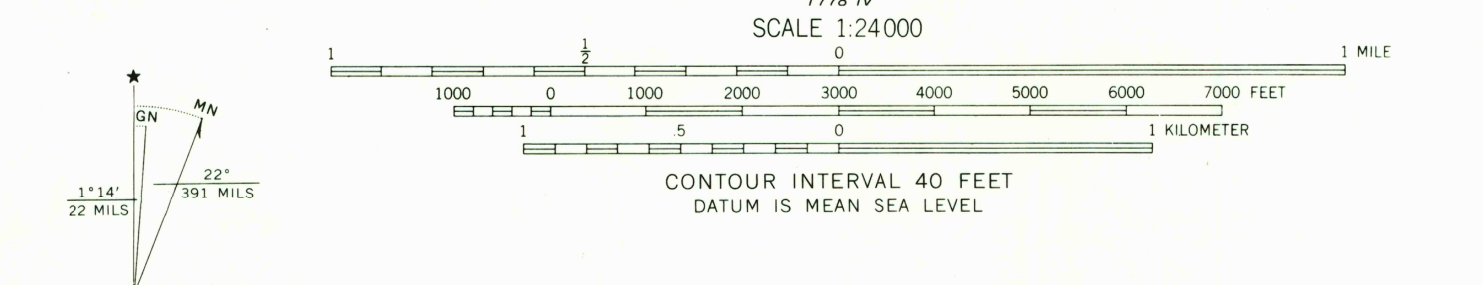
UNITED STATES
DEPARTMENT OF THE INTERIOR
GEOLOGICAL SURVEY

BIG SNOW MTN. QUADRANGLE
WASHINGTON
7.5 MINUTE SERIES (TOPOGRAPHIC)

1779 I NE
(SCENIC)



Maped, edited, and published by the Geological Survey
Control by USGS and USC&GS
Topography by photogrammetric methods from aerial
photographs taken 1958. Field checked 1965
Polyconic projection. 1927 North American datum
10,000-foot grids based on Washington coordinate system,
north and south zones
1000-meter Universal Transverse Mercator grid ticks,
zone 10, shown in blue



U.S.G.S.
FILE COPY
TOPOGRAPHIC DIVISION

BIG SNOW MTN., WASH.
N4730—W12115/7.5

1965

AMS 1779 III SE—SERIES V891

FOR SALE BY U. S. GEOLOGICAL SURVEY, DENVER, COLORADO 80225, OR WASHINGTON, D. C. 20242
A FOLDER DESCRIBING TOPOGRAPHIC MAPS AND SYMBOLS IS AVAILABLE ON REQUEST

3730
OCT 6 1967