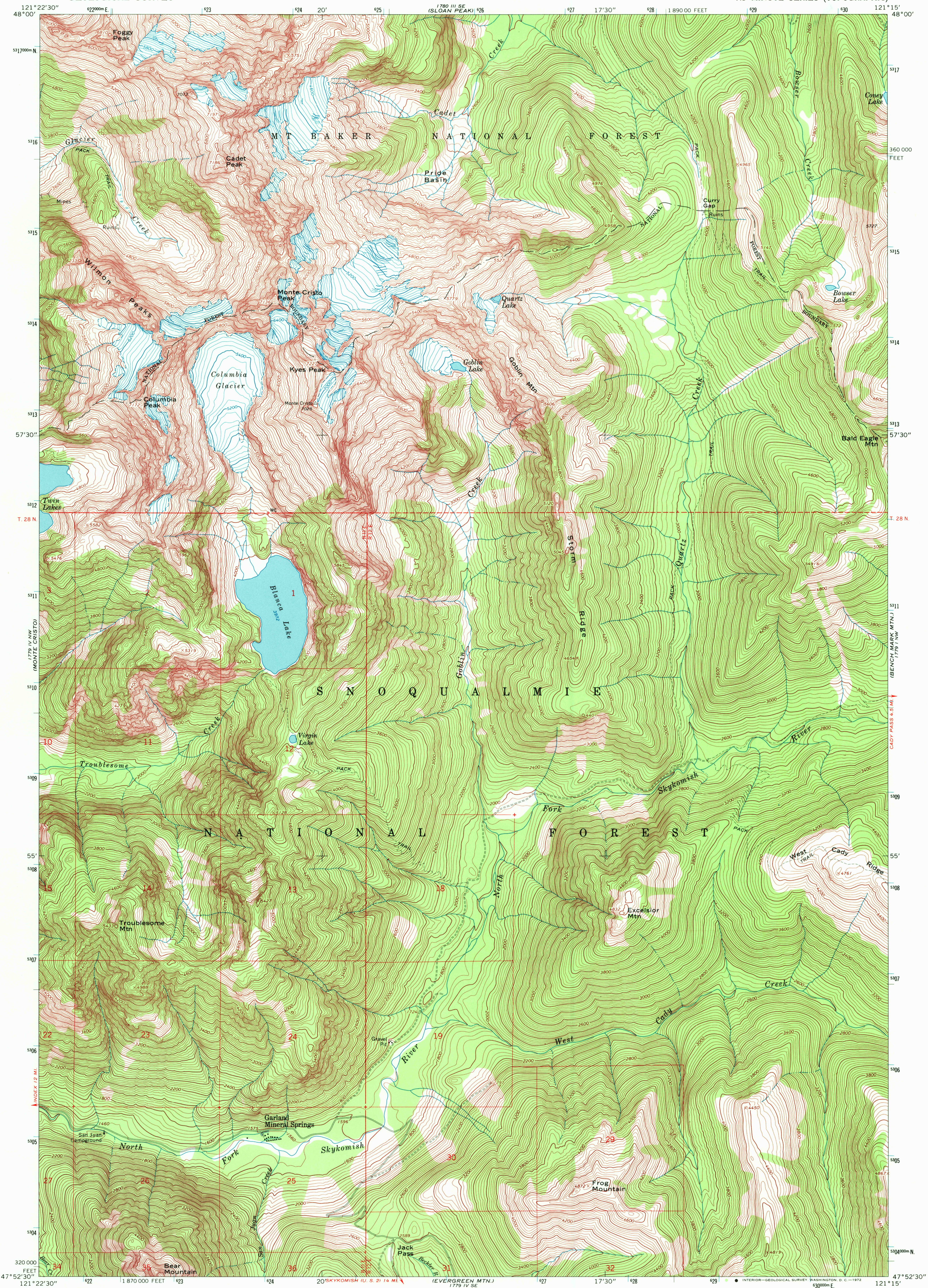


1799 IV NW TO
MONTE CRISTO

UNITED STATES
DEPARTMENT OF THE INTERIOR
GEOLOGICAL SURVEY

BLANCA LAKE QUADRANGLE
WASHINGTON—SNOHOMISH CO.
7.5 MINUTE SERIES (TOPOGRAPHIC)

1799 I SE
SLOAN PEAK
1,025.00



1799 IV NW TO
MONTE CRISTO

Mapped, edited, and published by the Geological Survey

Control by USGS and USC&GS

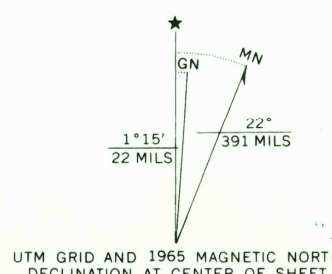
Topography by photogrammetric methods from aerial photographs taken 1958. Field checked 1965

Polyconic projection. 1927 North American datum

10,000-foot grid based on Washington coordinate system, north zone

1000-meter Universal Transverse Mercator grid ticks, zone 10, shown in blue

Where omitted, land lines have not been established



SCALE 1:24,000

1 1000 2000 3000 4000 5000 6000 7000 FEET

1 5 10 15 20 KILOMETER

CONTOUR INTERVAL 40 FEET

DATUM IS MEAN SEA LEVEL

FOR SALE BY U. S. GEOLOGICAL SURVEY, DENVER, COLORADO 80225, OR WASHINGTON, D. C. 20242
A FOLDER DESCRIBING TOPOGRAPHIC MAPS AND SYMBOLS IS AVAILABLE ON REQUEST



ROAD CLASSIFICATION
Light duty ————— Unimproved dirt - - - - -

BLANCA LAKE, WASH.

N4752.5—W12115.7.5

1965

AMS 1779 IV NE—SERIES V891

USGS
HISTORICAL FILE
TOPOGRAPHIC DIVISION

SEP 12 1972

6340