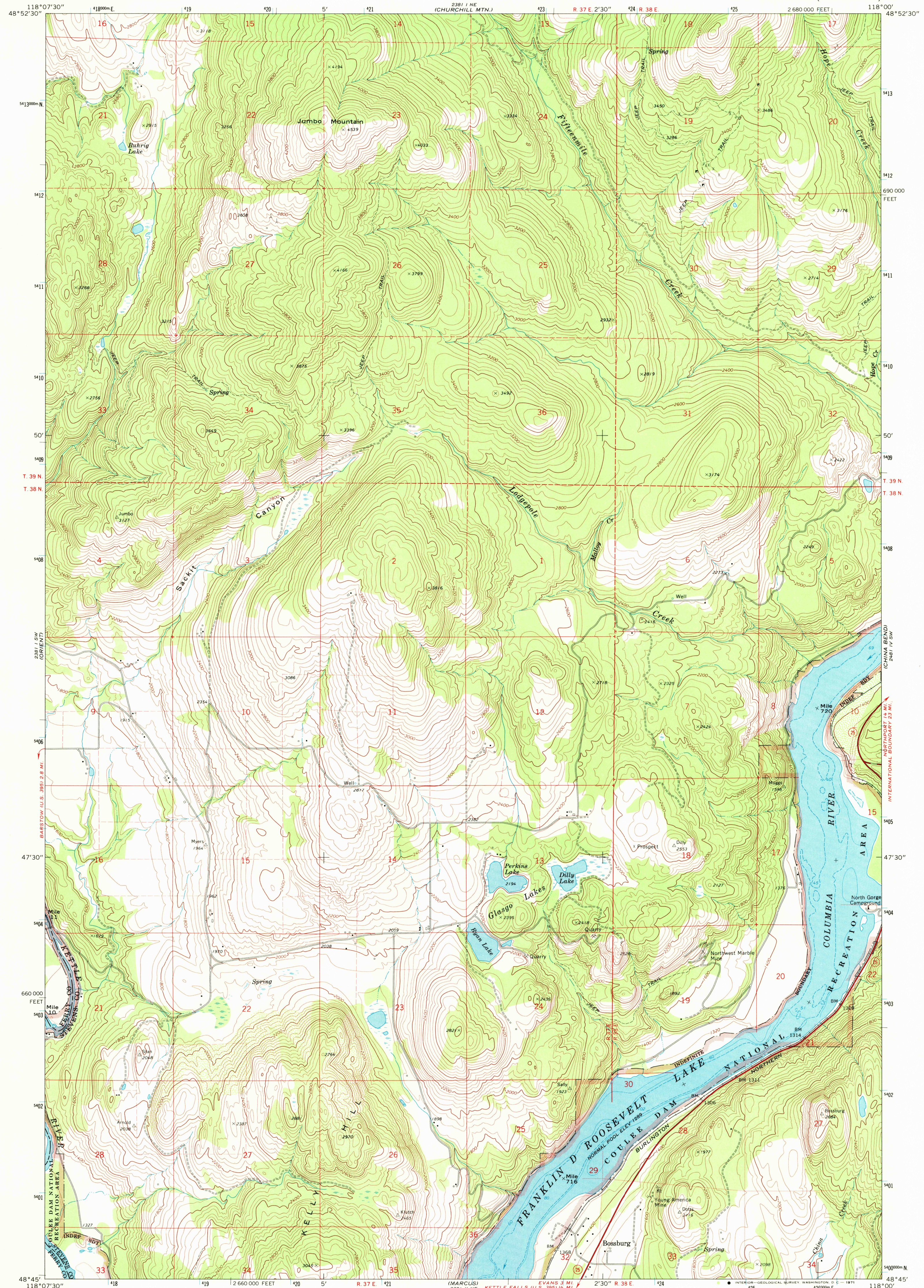


2381 I NW  
(LAURIER)

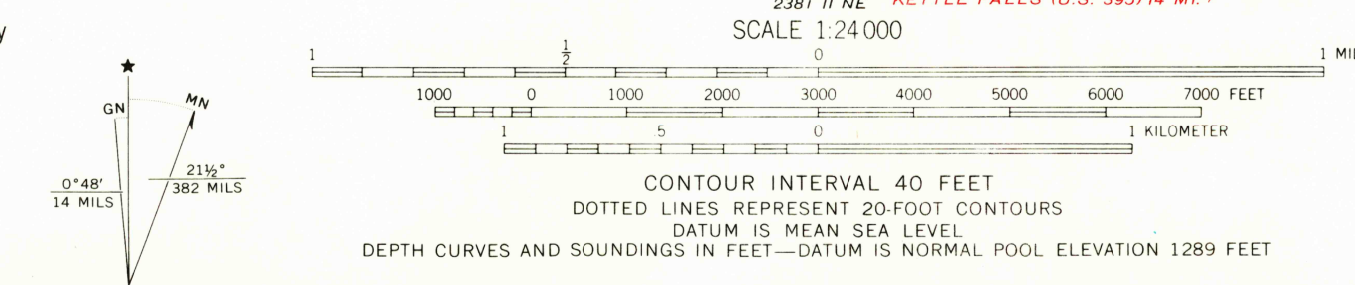
UNITED STATES  
DEPARTMENT OF THE INTERIOR  
GEOLOGICAL SURVEY

BOSSBURG QUADRANGLE  
WASHINGTON  
7.5 MINUTE SERIES (TOPOGRAPHIC)

2381 I NW  
(BELSHAZAR MTN.)



Mapped, edited, and published by the Geological Survey  
Control by USGS, USC&GS, and US Bureau of Reclamation  
Topography by photogrammetric methods from aerial  
photographs taken 1965. Field checked 1969  
Selected hydrographic data compiled from USC&GS  
Chart 6169 (1968). This information is not intended for  
navigational purposes  
Polyconic projection. 1927 North American datum  
10,000-foot grid based on Washington coordinate system,  
north zone  
1000-meter Universal Transverse Mercator grid ticks,  
zone 11, shown in blue  
Fine red dashed lines indicate selected fence lines  
Dotted land lines established by private survey



ROAD CLASSIFICATION  
Primary highway, all weather. Light-duty road, all weather,  
hard surface. improved surface  
Secondary highway, all weather. Unimproved road, fair or dry  
hard surface. weather  
State Route



THIS MAP COMPLIES WITH NATIONAL MAP ACCURACY STANDARDS  
FOR SALE BY U.S. GEOLOGICAL SURVEY, DENVER, COLORADO 80225, OR WASHINGTON, D.C. 20242  
A FOLDER DESCRIBING TOPOGRAPHIC MAPS AND SYMBOLS IS AVAILABLE ON REQUEST

USGS  
HISTORICAL FILE  
TOPOGRAPHIC DIVISION

BOSSBURG, WASH.  
N4845-W11800/7.5  
1969  
AMS 2381 I SE-SERIES V891

3235

NOV 1 1971

U.S. Geological Survey  
Historical File  
Topographic Division