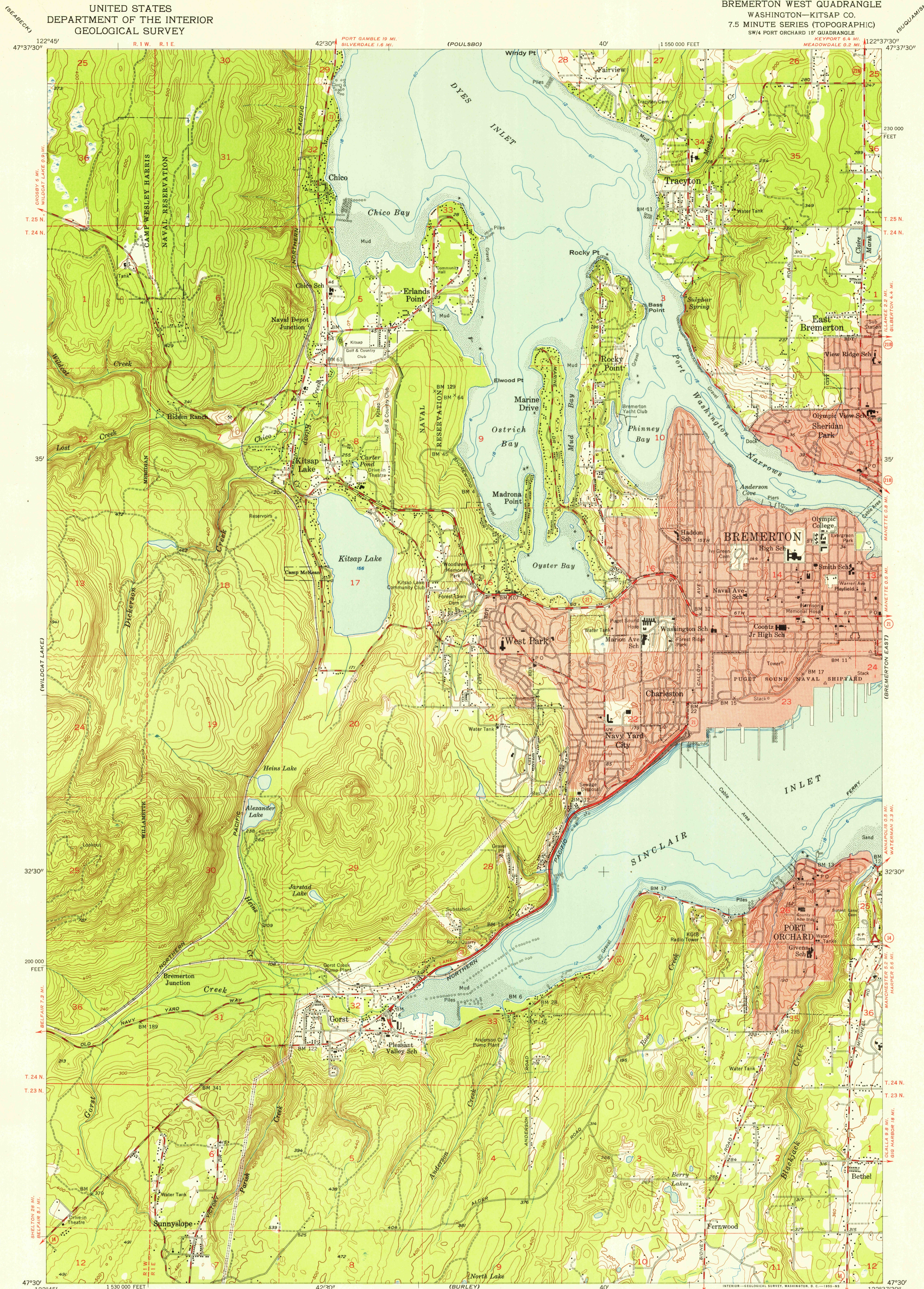
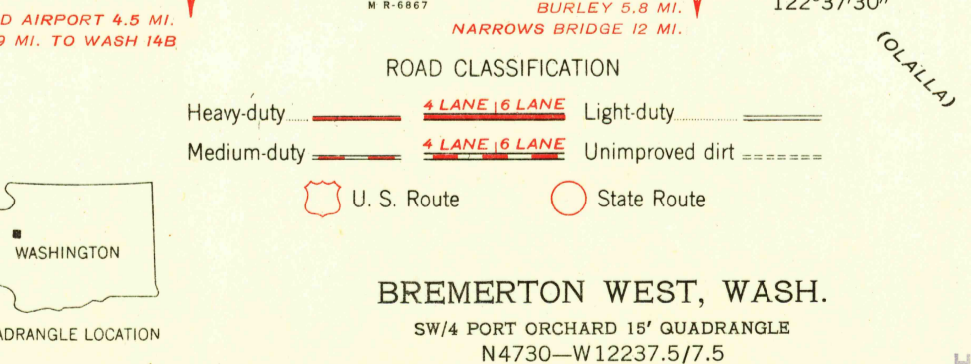
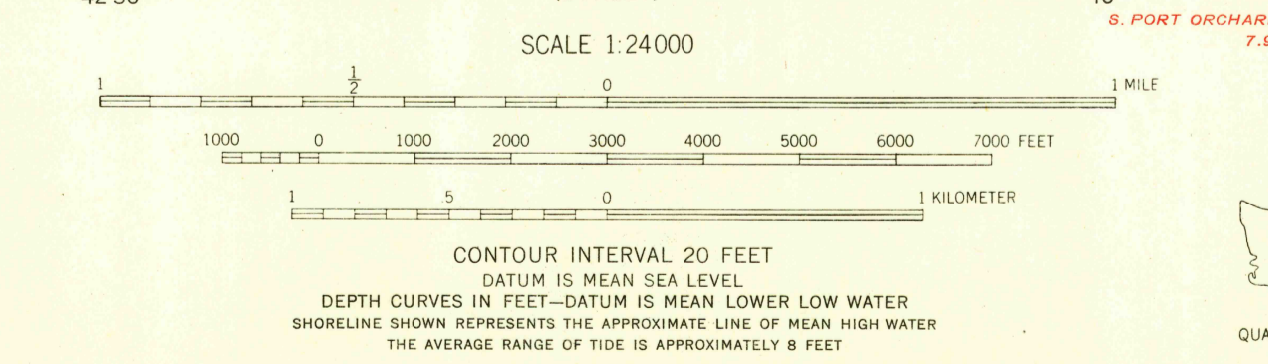
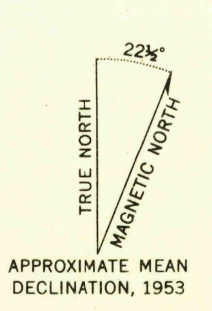


U.S.G.S.  
FILE COPY  
TOPOGRAPHIC DIVISION



Mapped, edited, and published by the Geological Survey  
Control by USC&GS  
Topography from aerial photographs by photogrammetric methods  
Aerial photographs taken 1951. Field check 1953  
Hydrography compiled from USC&GS Charts 6440 and 6446  
Polyconic projection. 1927 North American datum  
10,000-foot grid based on Washington coordinate system, north zone  
Dashed land lines indicate approximate locations  
Red tint indicates areas in which only landmark buildings are shown



FOR SALE BY U. S. GEOLOGICAL SURVEY, FEDERAL CENTER, DENVER, COLORADO OR WASHINGTON 25, D. C.  
A FOLDER DESCRIBING TOPOGRAPHIC MAPS AND SYMBOLS IS AVAILABLE ON REQUEST

BREMERTON WEST, WASH.  
SW/4 PORT ORCHARD 15' QUADRANGLE  
N4730-W12237.5/7.5

1953

Historical File  
Topographic Division  
MAY 2 1955

U.S.G.S.  
FILE COPY  
TOPOGRAPHIC DIVISION

4295