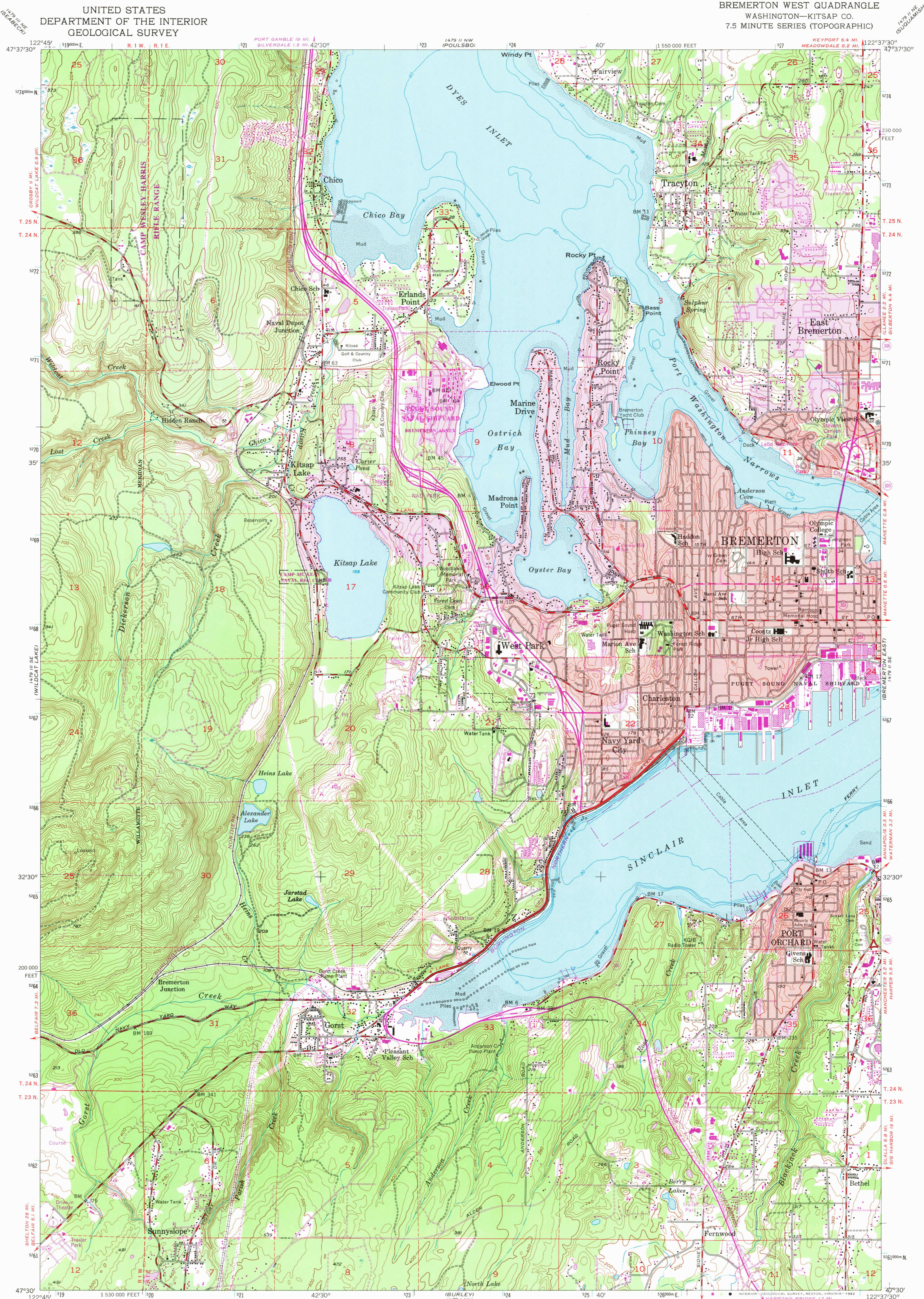


UNITED STATES
DEPARTMENT OF THE INTERIOR
GEOLOGICAL SURVEY

BREMERTON WEST QUADRANGLE
WASHINGTON—KITSAP CO.
7.5 MINUTE SERIES (TOPOGRAPHIC)



Mapped, edited, and published by the Geological Survey
Control by USGS and NOS/NOAA
Topography by photogrammetric methods from
aerial photographs taken 1951. Field checked 1953
Selected hydrographic data compiled from NOS charts
6440 and 6446. This information is not intended for
navigational purposes
Polyconic projection. 10,000-foot grid ticks based on
Washington coordinate system, north zone. 1000-meter
Universal Transverse Mercator grid ticks, zone 10, shown
in blue. 1927 North American Datum. To place on the
predicted North American Datum 1983 move the projection
lines 23 meters north and 94 meters east as shown
by dashed corner ticks
Red tint indicates areas in which only landmark
buildings are shown

SCALE 1:24 000
CONTOUR INTERVAL 20 FEET
NATIONAL GEODETIC VERTICAL DATUM OF 1929
DEPTH CURVES AND SOUNDINGS IN FEET—DATUM IS MEAN LOWER LOW WATER
THE RELATIONSHIP BETWEEN THE TWO DATUMS IS VARIABLE
SHORELINE SHOWN REPRESENTS THE APPROXIMATE LINE OF MEAN HIGH WATER
THE MEAN RANGE OF TIDE IS APPROXIMATELY 8 FEET
FOR SALE BY U. S. GEOLOGICAL SURVEY, DENVER, COLORADO 80225, OR RESTON, VIRGINIA 22092
A FOLDER DESCRIBING TOPOGRAPHIC MAPS AND SYMBOLS IS AVAILABLE ON REQUEST

ROAD CLASSIFICATION
Heavy-duty ——— Light-duty ———
Medium-duty ——— Unimproved dirt ———
State Route ○

QUADRANGLE LOCATION
WASHINGTON
N4730—W12237.5/7.5
1953
PHOTOREVISED 1981
DMA 1479 II SW—SERIES V891

Revisions shown in purple and woodland compiled
from aerial photographs taken 1978. This
information not field checked. Map edited 1981
Purple tint indicates extension of urban areas

RETURN TO:
USGS AND HISTORICAL MAP ARCHIVES
JAN 20 1982