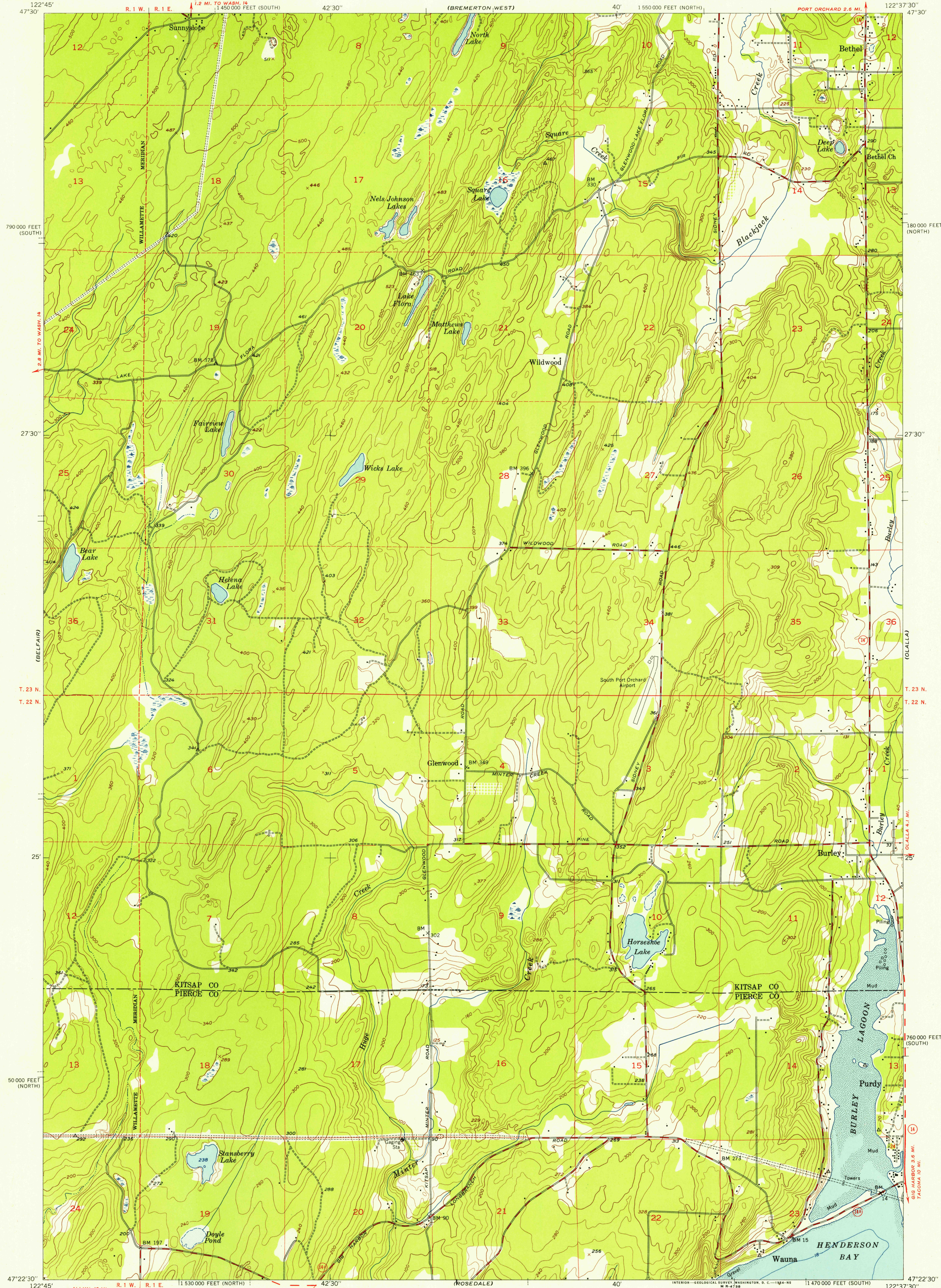
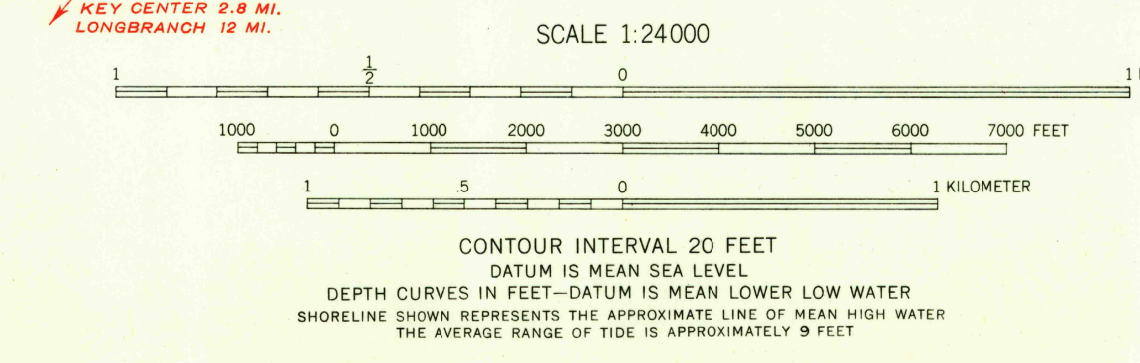


UNITED STATES  
DEPARTMENT OF THE INTERIOR  
GEOLOGICAL SURVEY

BURLEY QUADRANGLE  
WASHINGTON  
7.5 MINUTE SERIES (TOPOGRAPHIC)  
NW/4 GIG HARBOR 15' QUADRANGLE



Mapped, edited, and published by the Geological Survey  
Control by USGS, USC&GS, and USCE  
Topography from aerial photographs by multiple methods  
Aerial photographs taken 1951. Field check 1953  
Hydrography compiled from USC&GS chart 6460  
Polyconic projection. 1927 North American datum  
10,000-foot grids based on Washington coordinate system,  
north and south zones  
Dashed land lines indicate approximate locations  
Unchecked elevations are shown in brown



ROAD CLASSIFICATION  
Heavy-duty — 4 LANE 16 LANE Light-duty —  
Medium-duty — 4 LANE 16 LANE Unimproved dirt —  
U.S. Route State Route  
BURLEY, WASH.  
NW/4 GIG HARBOR 15' QUADRANGLE  
N 4722.5—W 12237.5/7.5  
1953

FOR SALE BY U. S. GEOLOGICAL SURVEY, FEDERAL CENTER, DENVER, COLORADO OR WASHINGTON 25, D. C.  
A FOLDER DESCRIBING TOPOGRAPHIC MAPS AND SYMBOLS IS AVAILABLE ON REQUEST

U.S.G.S.  
FILE COPY  
TOPOGRAPHIC DIVISION

U.S.G.S.  
FILE COPY  
TOPOGRAPHIC DIVISION