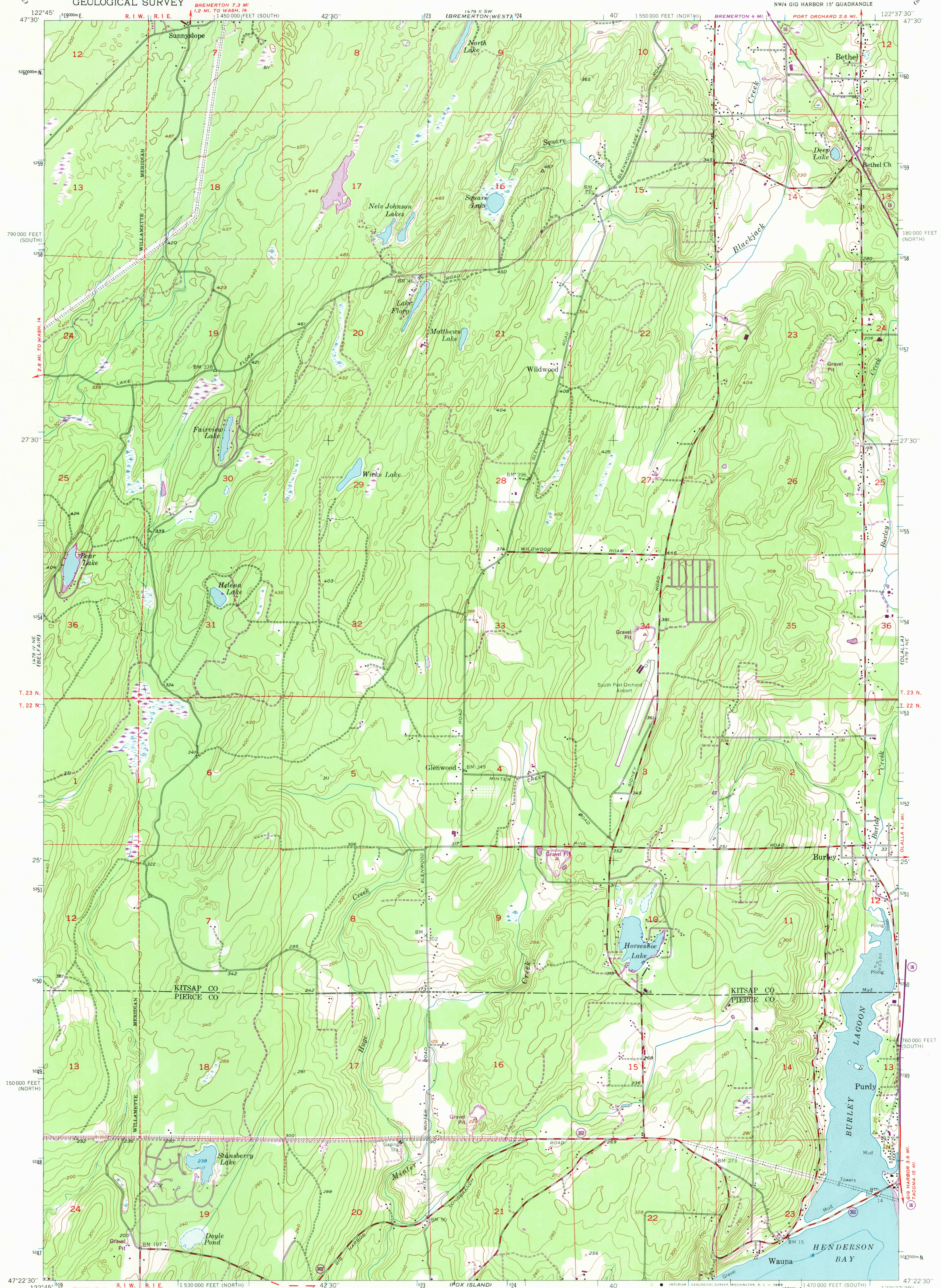


UNITED STATES
DEPARTMENT OF THE INTERIOR
GEOLOGICAL SURVEY

BURLEY QUADRANGLE
WASHINGTON
7.5 MINUTE SERIES (TOPOGRAPHIC)
NW/4 GIG HARBOR 15' QUADRANGLE



Mapped, edited, and published by the Geological Survey

Control by USGS, USC&GS, and USCE

Topography from aerial photographs by multiplex methods

Aerial photographs taken 1951. Field check 1953

Hydrography compiled from USC&GS chart 6460

Polyconic projection. 1927 North American datum

10,000-foot grids based on Washington coordinate system,

north and south zones

Dashed land lines indicate approximate locations

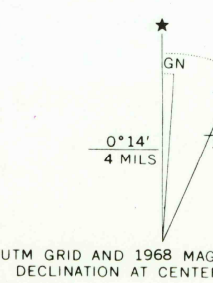
Unchecked elevations are shown in brown

1000-meter Universal Transverse Mercator grid ticks,

zone 10, shown in blue

Revisions shown in purple compiled from aerial photographs

taken 1968. This information not field checked



CONTOUR INTERVAL 20 FEET
DATUM IS MEAN SEA LEVEL
DEPTH CURVES IN FEET—DATUM IS MEAN LOWER LOW WATER
SHORELINE SHOWN REPRESENTS THE APPROXIMATE LINE OF MEAN HIGH WATER
THE AVERAGE RANGE OF TIDE IS APPROXIMATELY 9 FEET



ROAD CLASSIFICATION

| | |
|-------------|-----------------|
| Heavy duty | Light duty |
| Medium duty | Unimproved dirt |
| | State Route |

USGS
Historical File
Topographic Division

BURLEY, WASH.
NW/4 GIG HARBOR 15' QUADRANGLE
N 4722.5—W 12237.5/7.5

1953
PHOTOREVISED 1968
AMS 1478 I NW—SERIES V891

FOR SALE BY U. S. GEOLOGICAL SURVEY, DENVER, COLORADO 80225 OR WASHINGTON, D. C. 20242
A FOLDER DESCRIBING TOPOGRAPHIC MAPS AND SYMBOLS IS AVAILABLE ON REQUEST

OCT 3 1968