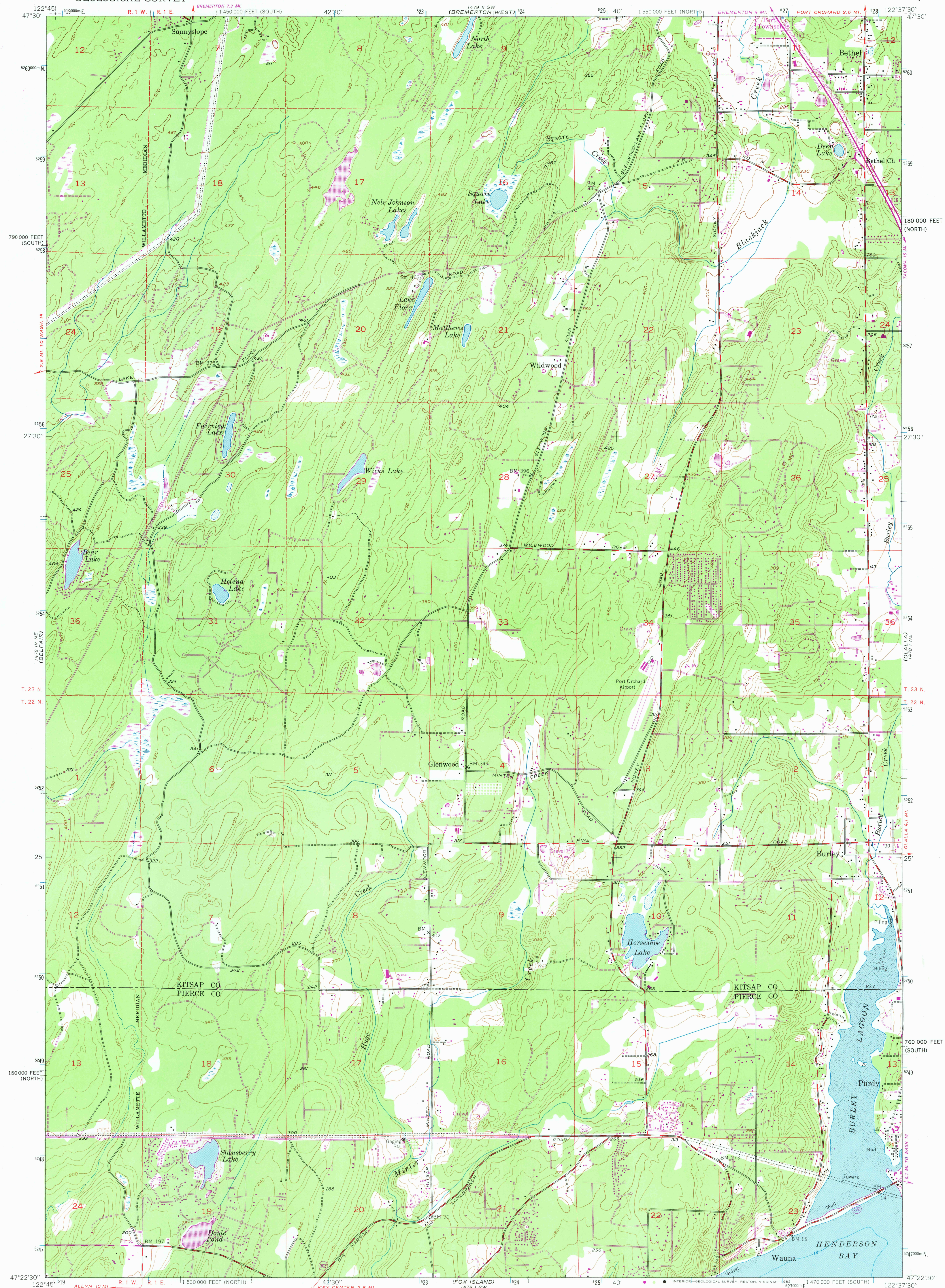


UNITED STATES
DEPARTMENT OF THE INTERIOR
GEOLOGICAL SURVEY

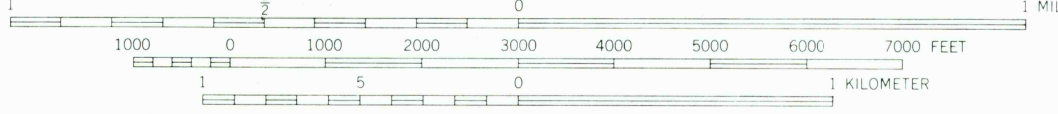
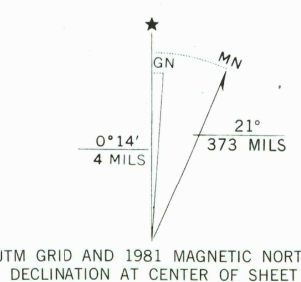
BURLEY QUADRANGLE
WASHINGTON
7.5 MINUTE SERIES (TOPOGRAPHIC)



Mapped, edited, and published by the Geological Survey
Control by USGS and NOS/NOAA

Topography by photogrammetric methods from aerial
photographs taken 1951. Field checked 1953
Selected hydrographic data compiled from NOS chart 6460
This information is not intended for navigational purposes
Polyconic projection, 10,000-foot grid ticks based on
Washington coordinate system, north and south zones
1000-meter Universal Transverse Mercator grid ticks, zone
10, shown in blue, 1927 North American Datum. To place on
the predicted North American Datum 1983 move the
projection lines 23 meters north and 94 meters east as
shown by dashed corner ticks

Revisions shown in purple and woodland compiled from
aerial photographs taken 1978 and other sources
This information not field checked. Map edited 1981



CONTOUR INTERVAL 20 FEET
NATIONAL GEODETIC VERTICAL DATUM OF 1929
DEPTH CURVES AND SOUNDINGS IN FEET-DATUM IS MEAN LOWER LOW WATER
THE RELATIONSHIP BETWEEN THE TWO DATUMS IS VARIABLE
SHORELINE SHOWN REPRESENTS THE APPROXIMATE LINE OF MEAN HIGH WATER
THE AVERAGE RANGE OF TIDE IS APPROXIMATELY 9 FEET

FOR SALE BY U. S. GEOLOGICAL SURVEY, DENVER, COLORADO 80225, OR RESTON, VIRGINIA 22092
A FOLDER DESCRIBING TOPOGRAPHIC MAPS AND SYMBOLS IS AVAILABLE ON REQUEST



ROAD CLASSIFICATION
Heavy-duty ——— Light-duty ———
Medium-duty ——— Unimproved dirt ———
State Route ———

BURLEY, WASH.

N 4722.5 - W 12237.5/7.5

1953
PHOTOREVISED 1981
DMA 1478 I NW-SERIES V891

RETURN TO:
USGS AND HISTORICAL MAP ARCHIVES

JAN 20 1982

2776