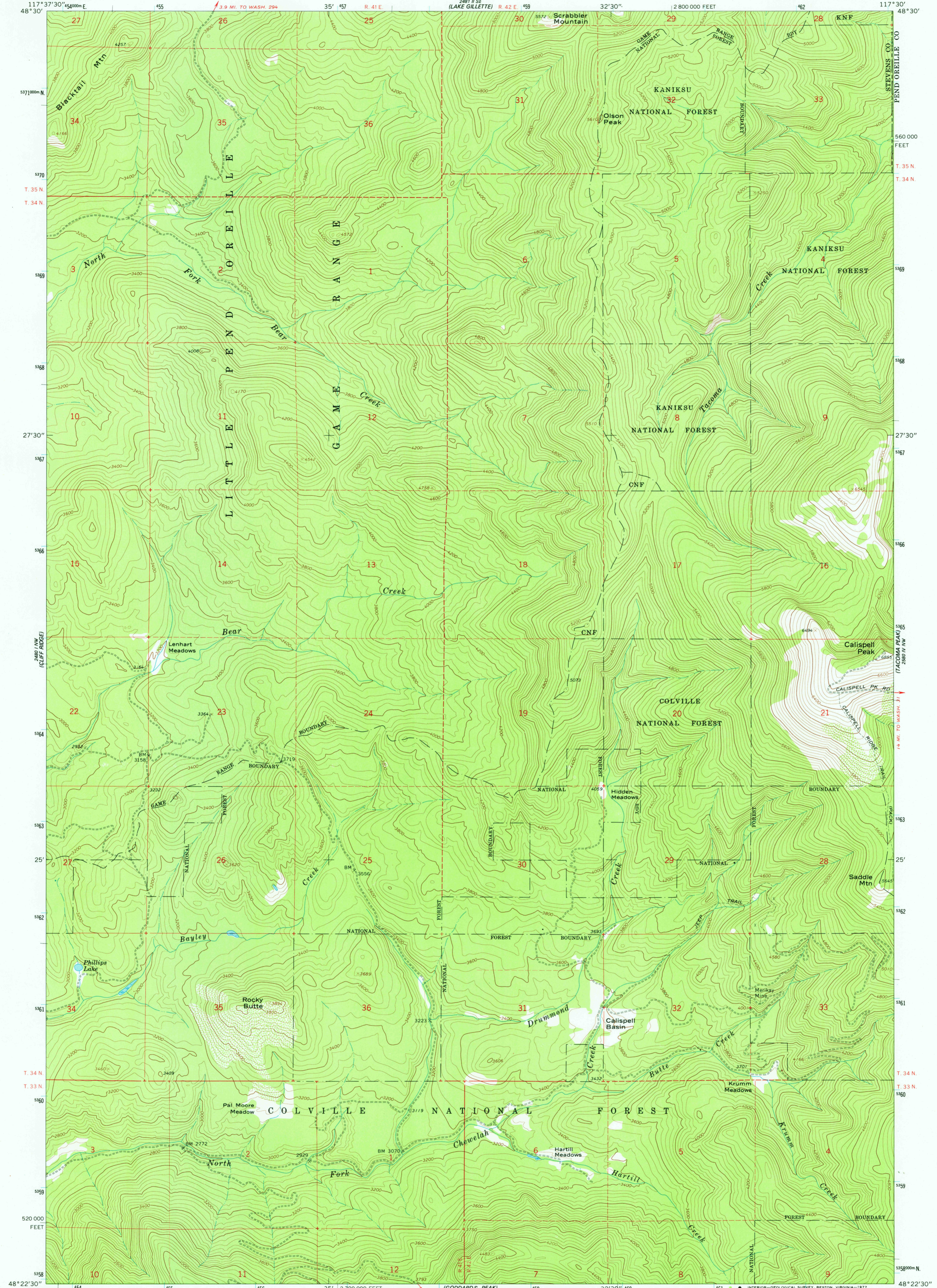


39° 59' 30" N  
117° 37' 30" W  
PARK RANGE

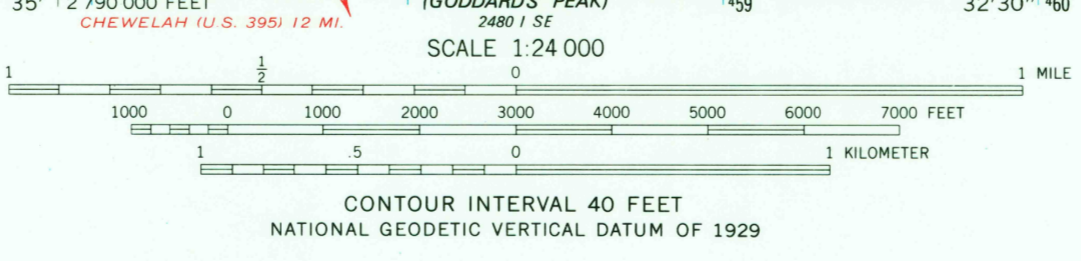
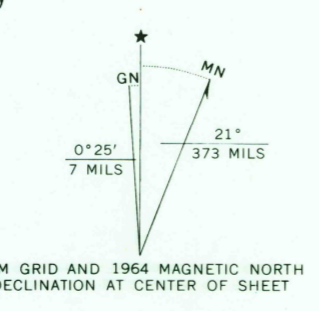
UNITED STATES  
DEPARTMENT OF THE INTERIOR  
GEOLOGICAL SURVEY

CALISPELL PEAK QUADRANGLE  
WASHINGTON  
7.5 MINUTE SERIES (TOPOGRAPHIC)  
NE 1/4 CHEWELAH MTN. 15' QUADRANGLE

39° 59' 30" N  
117° 37' 30" W  
TIMBER MTN.



Mapped, edited, and published by the Geological Survey  
Control by USGS and USC&GS  
Topography by photogrammetric methods from aerial  
photographs taken 1962. Field checked 1964  
Polyconic projection. 1927 North American datum  
10,000-foot grid based on Washington coordinate system,  
north zone  
1000-meter Universal Transverse Mercator grid ticks,  
zone 11, shown in blue  
Fine red dashed lines indicate selected fence lines



ROAD CLASSIFICATION  
Unimproved dirt =-----

CALISPELL PEAK, WASH.  
NE 1/4 CHEWELAH MTN. 15' QUADRANGLE  
N4822.5--W11730/7.5

FOR SALE BY U. S. GEOLOGICAL SURVEY, DENVER, COLORADO 80225, OR RESTON, VIRGINIA 22092  
A FOLDER DESCRIBING TOPOGRAPHIC MAPS AND SYMBOLS IS AVAILABLE ON REQUEST

USGS  
Historical File  
Topographic Division  
1964  
AMS 2480 1 NE--SERIES V891

2780  
OCT 13 1977