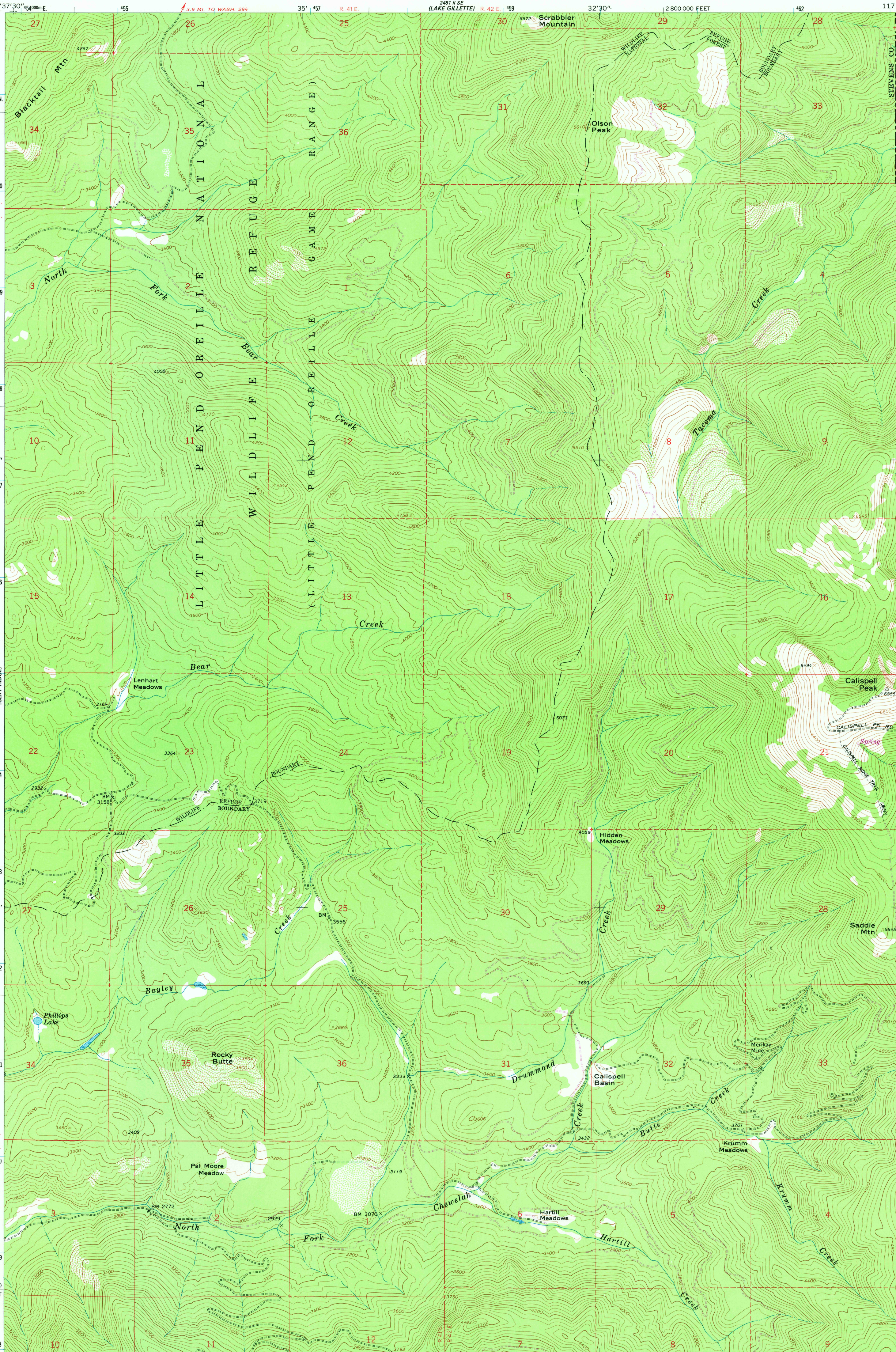
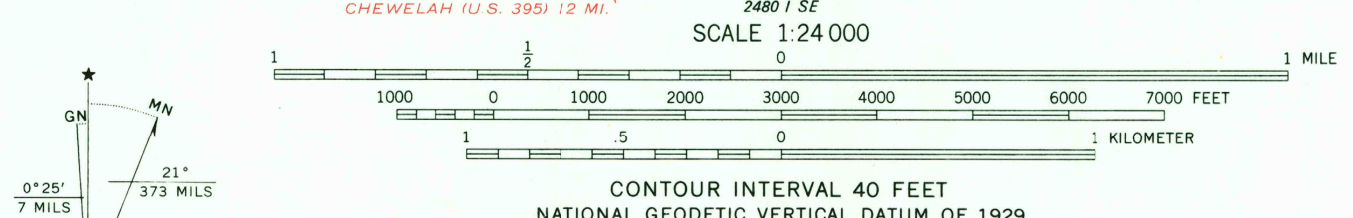


48° 30' N
5710000 N
5370
T. 35 N
T. 34 N
5369
5368
27° 30' N
5367
5366
2699' NW (CLIFF RIDGE)
5364
5363
25'
5362
5361
T. 34 N
T. 33 N
5360
52000 FEET
5359
48° 22' 30" N
117° 37' 30" W
117° 37' 30" W
117° 36' 30" W
117° 35' 30" W
117° 34' 30" W
117° 33' 30" W
117° 32' 30" W
117° 31' 30" W
117° 30' 30" W
117° 30' 00" W



Mapped, edited, and published by the Geological Survey
Control by USGS and NOS/NOAA
Topography by photogrammetric methods from aerial photographs taken 1962. Field checked 1964
Polyconic projection. 1927 North American datum
10,000-foot grid based on Washington coordinate system, north zone
1000-meter Universal Transverse Mercator grid ticks, zone 11, shown in blue
To place on the predicted North American Datum 1983 move the projection lines 15 meters north and 80 meters east as shown by dashed corner ticks
Fine red dashed lines indicate selected fence lines
There may be private inholdings within the boundaries of the National or State reservations shown on this map



USGS
Historical File
Topographic Division
ROAD CLASSIFICATION
Unimproved dirt -----



CALISPELL PEAK, WASH.
NE/4 CHEWELAH MTN. 15' QUADRANGLE
N4822.5-W11730/7.5

FOR SALE BY U. S. GEOLOGICAL SURVEY, DENVER, COLORADO 80225, OR RESTON, VIRGINIA 22092
A FOLDER DESCRIBING TOPOGRAPHIC MAPS AND SYMBOLS IS AVAILABLE ON REQUEST

Revisions shown in purple and woodland compiled by the State of Washington from aerial photographs taken 1977 and other source data. This information not field checked
1964
PHOTOREVISED 1980
DMA 2480 1 NE—SERIES V891

JAN 29 1981
1980