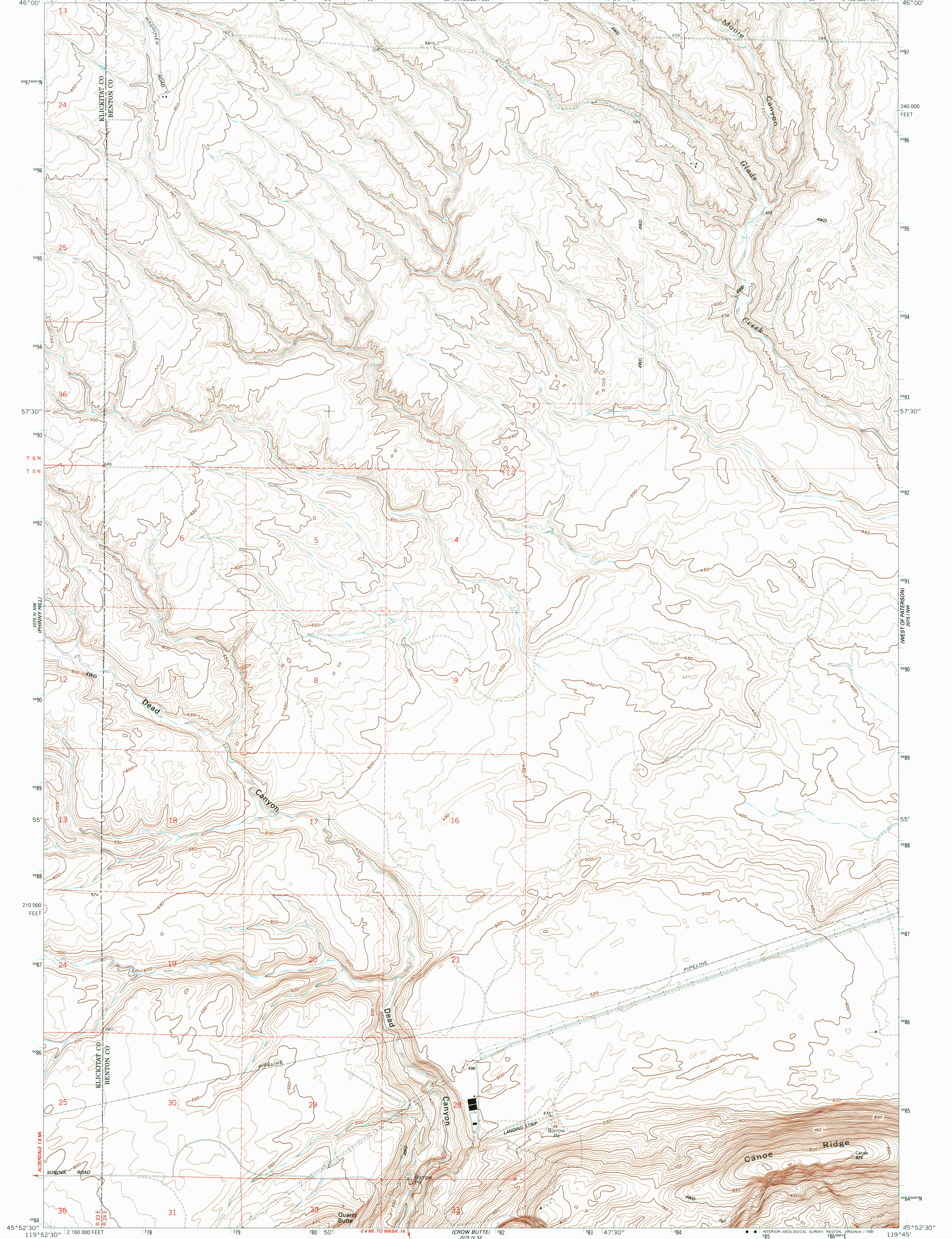
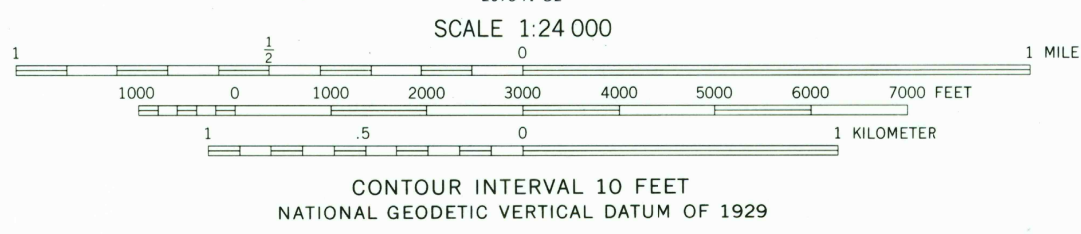
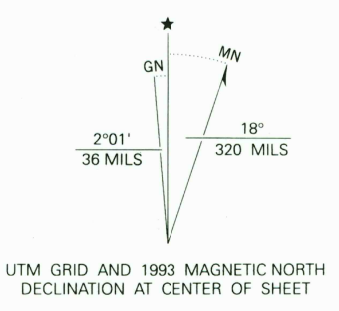


2075 IV SW
(PROSSER SW)

2075 IV SW
(LEAZE RANCH)

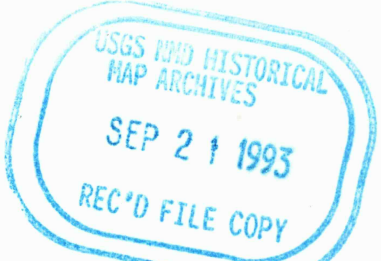


Produced by the United States Geological Survey
Control by USGS and NOS/NOAA
Compiled from aerial photographs taken 1960. Revised from aerial
photographs taken 1989 and other sources. Field checked 1991
Map edited 1993
1927 North American Datum (NAD 27). Projection and
10000-foot ticks. Washington Coordinate System, south zone
(Lambert Conformal Conic)
Blue 1000-meter Universal Transverse Mercator ticks, zone 11
North American Datum of 1983 (NAD 83) is shown by dashed
corner ticks. The values of the shift between NAD 27 and NAD 83
for 7.5-minute intersections are given in USGS Bulletin 1875
Fine red dashed lines indicate selected fence and field lines where
generally visible on aerial photographs. This information is unchecked
Certain land lines are omitted because of insufficient data



ROAD CLASSIFICATION
Light-duty ——— Unimproved dirt - - - - -

CANOE RIDGE, WASH.
45119-H7-TF-024
1993
DMA 2075 IV NE-SERIES V891



2075 IV SW
(GOLGOTHA BUTTE)

2075 IV SW
(ROADMAN)