

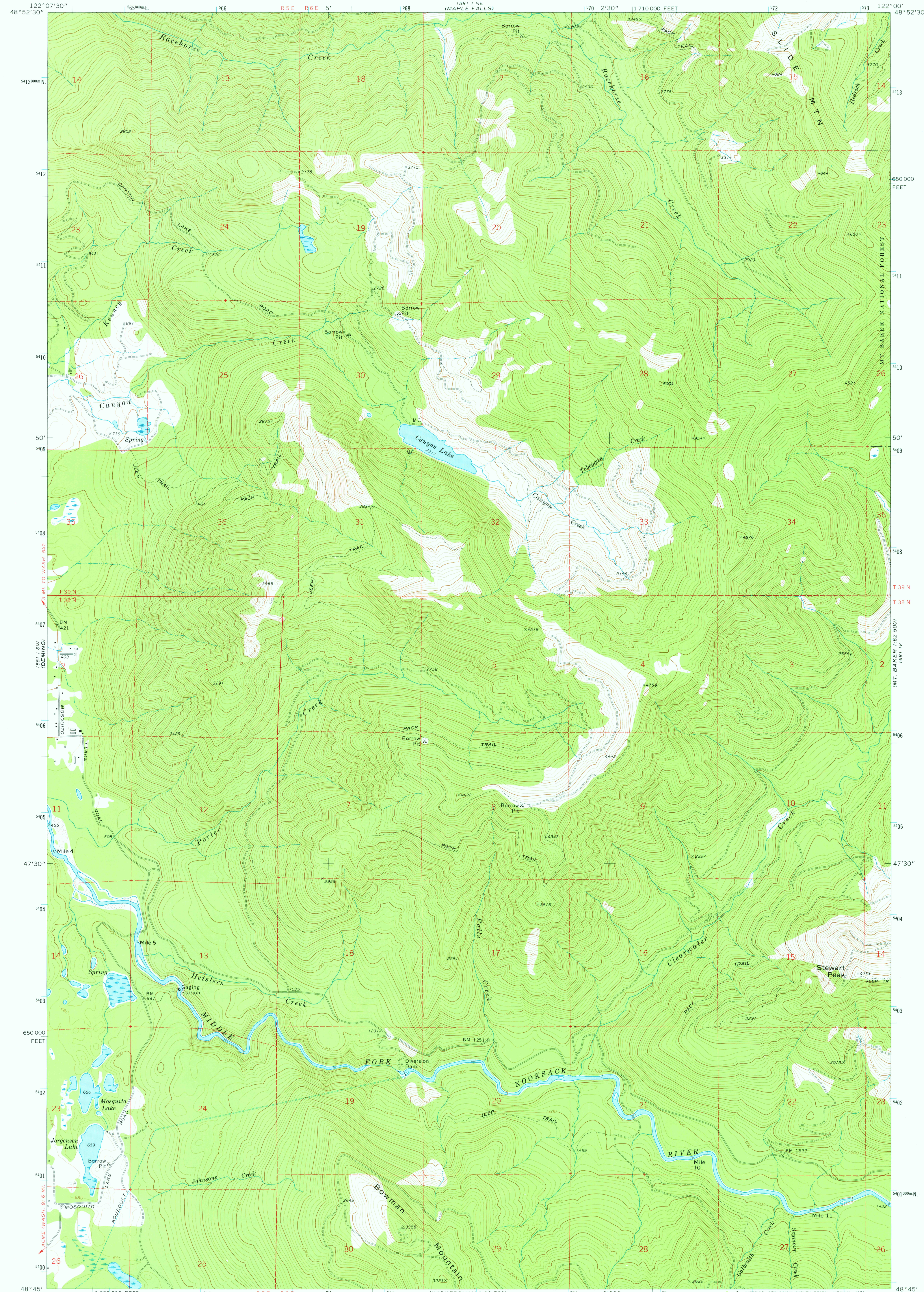
1581 1/4
KENDALL

UNITED STATES
DEPARTMENT OF THE INTERIOR
GEOLOGICAL SURVEY

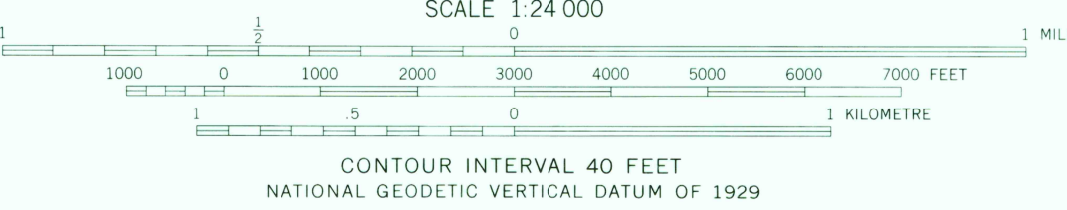
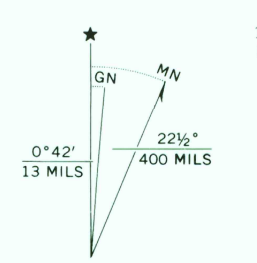
STATE OF WASHINGTON
DEPARTMENT OF NATURAL RESOURCES

CANYON LAKE QUADRANGLE
WASHINGTON—WHATCOM CO.
7.5 MINUTE SERIES (TOPOGRAPHIC)

1581 1/4
MT. BAKER 1:62 500



Mapped, edited, and published by the Geological Survey
Control by USGS and NOS/NOAA
Topography by photogrammetric methods from aerial
photographs taken 1972. Field checked 1972
Projection and 10,000-foot grid ticks: Washington coordinate
system, north zone (Lambert conformal conic)
1000-metre Universal Transverse Mercator grid ticks,
zone 10, shown in blue. 1927 North American datum



ROAD CLASSIFICATION

Primary highway, hard surface	Light-duty road, hard or improved surface
Secondary highway, hard surface	Unimproved road
Interstate Route	U. S. Route
	State Route

CANYON LAKE, WASH.
SE 1/4 VAN ZANDT 15' QUADRANGLE
N4845-W12200/7.5

USGS
Historical File
Topographic Division

1972
AMS 1581 I SE—SERIES V891

FOR SALE BY U. S. GEOLOGICAL SURVEY, DENVER, COLORADO 80225, OR RESTON, VIRGINIA 22092
A FOLDER DESCRIBING TOPOGRAPHIC MAPS AND SYMBOLS IS AVAILABLE ON REQUEST

WICKERSHAM 1:62 500
1581 1/4

1581 1/4
MT. BAKER 1:62 500

APR 12 1977

2300