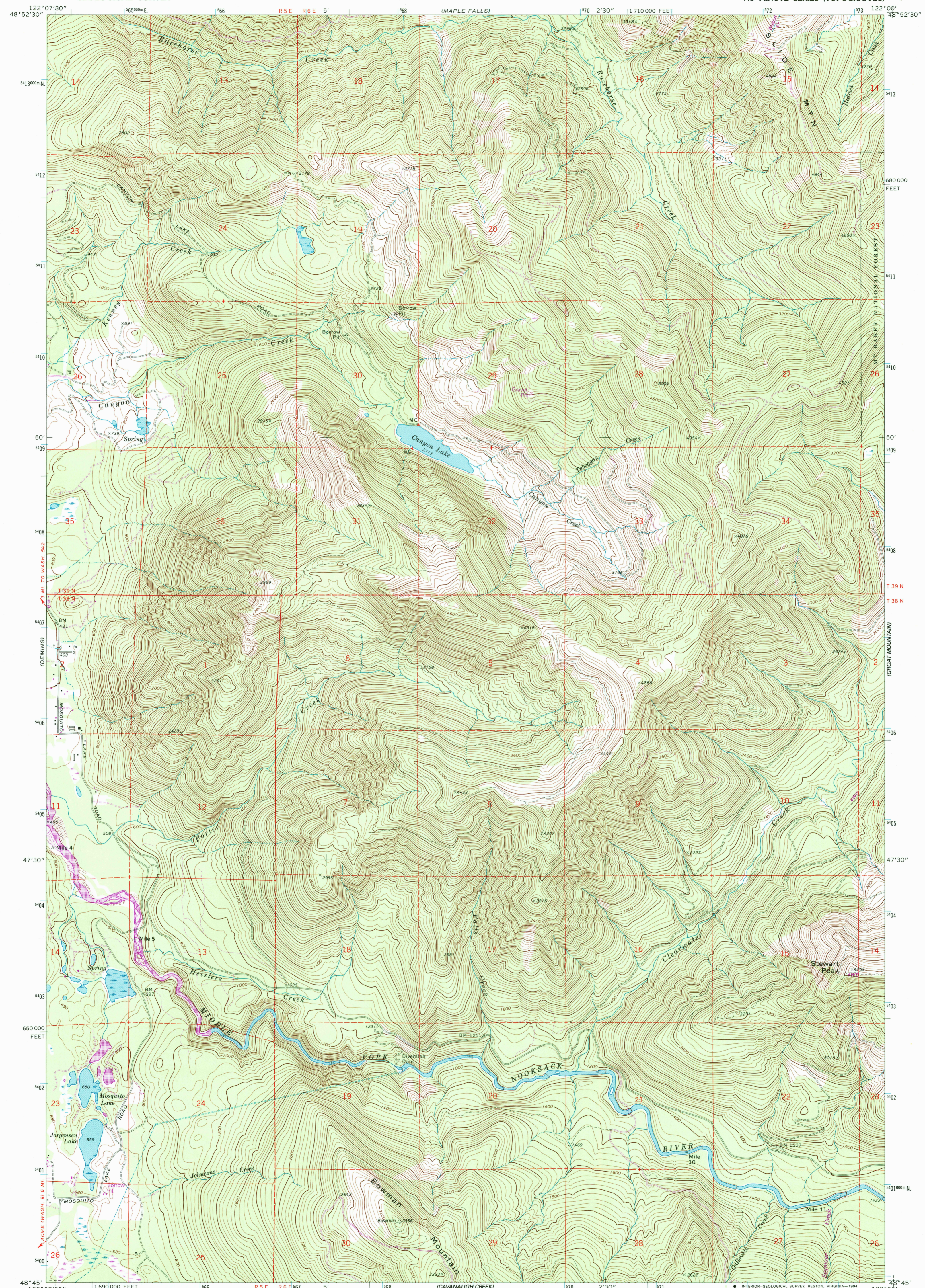


(KENDALL)

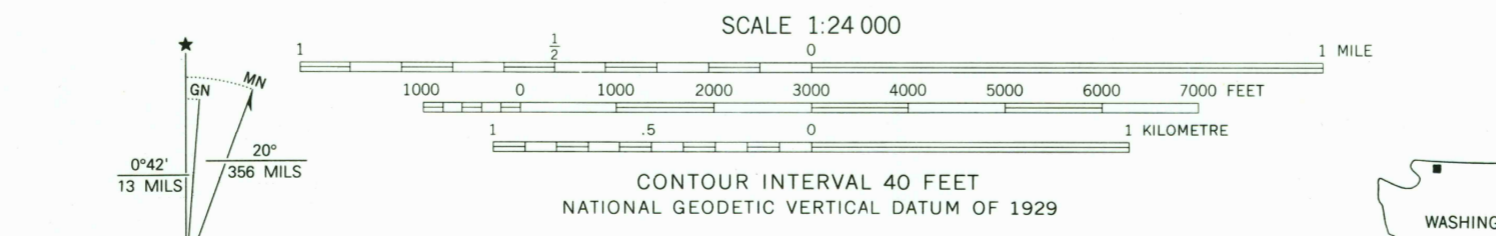
UNITED STATES  
DEPARTMENT OF THE INTERIOR  
GEOLOGICAL SURVEY

CANYON LAKE QUADRANGLE  
WASHINGTON-WHATCOM CO.  
7.5 MINUTE SERIES (TOPOGRAPHIC)

(BLADEN)



Produced by the United States Geological Survey  
Control by USGS and NOS/NOAA  
Compiled from aerial photographs taken 1972. Revisions shown in purple compiled from aerial photographs taken 1989 and other sources and have been field checked. Map edited 1993. Conflicts may exist between some updated features and previously mapped contours.  
North American Datum of 1927 (NAD 27). Projection and 10,000-foot ticks: Washington Coordinate System, north zone (Lambert Conformal Conic).  
Blue 1000-meter Universal Transverse Mercator ticks, zone 10 North American Datum of 1983 (NAD 83) is shown by dashed corner ticks. The values of the shift between NAD 27 and NAD 83 for 7.5-minute intersections are obtainable from National Geodetic Survey NADCON software.  
There may be private inholdings within the boundaries of the National or State reservations shown on this map.



ROAD CLASSIFICATION  
 Primary highway, hard surface ————  
 Secondary highway, hard surface ————  
 Light duty road, hard or improved surface ————  
 Unimproved road ————  
 Interstate Route ————  
 U. S. Route ————  
 State Route ————

UTM GRID AND 1993 MAGNETIC NORTH DECLINATION AT CENTER OF SHEET  
 COMPLIES WITH U.S. GEOLOGICAL SURVEY STANDARDS FOR SPATIAL ACCURACY—CLASS 2  
 FOR SALE BY U.S. GEOLOGICAL SURVEY  
 DENVER, COLORADO 80225, OR RESTON, VIRGINIA 22092  
 A FOLDER DESCRIBING TOPOGRAPHIC MAPS AND SYMBOLS IS AVAILABLE ON REQUEST

WASHINGTON  
 QUADRANGLE LOCATION  
 CANYON LAKE, WASH.  
 48122-G1-TF-024  
 1972  
 REVISED 1993  
 DMA 1581 1 SE-SERIES V891

