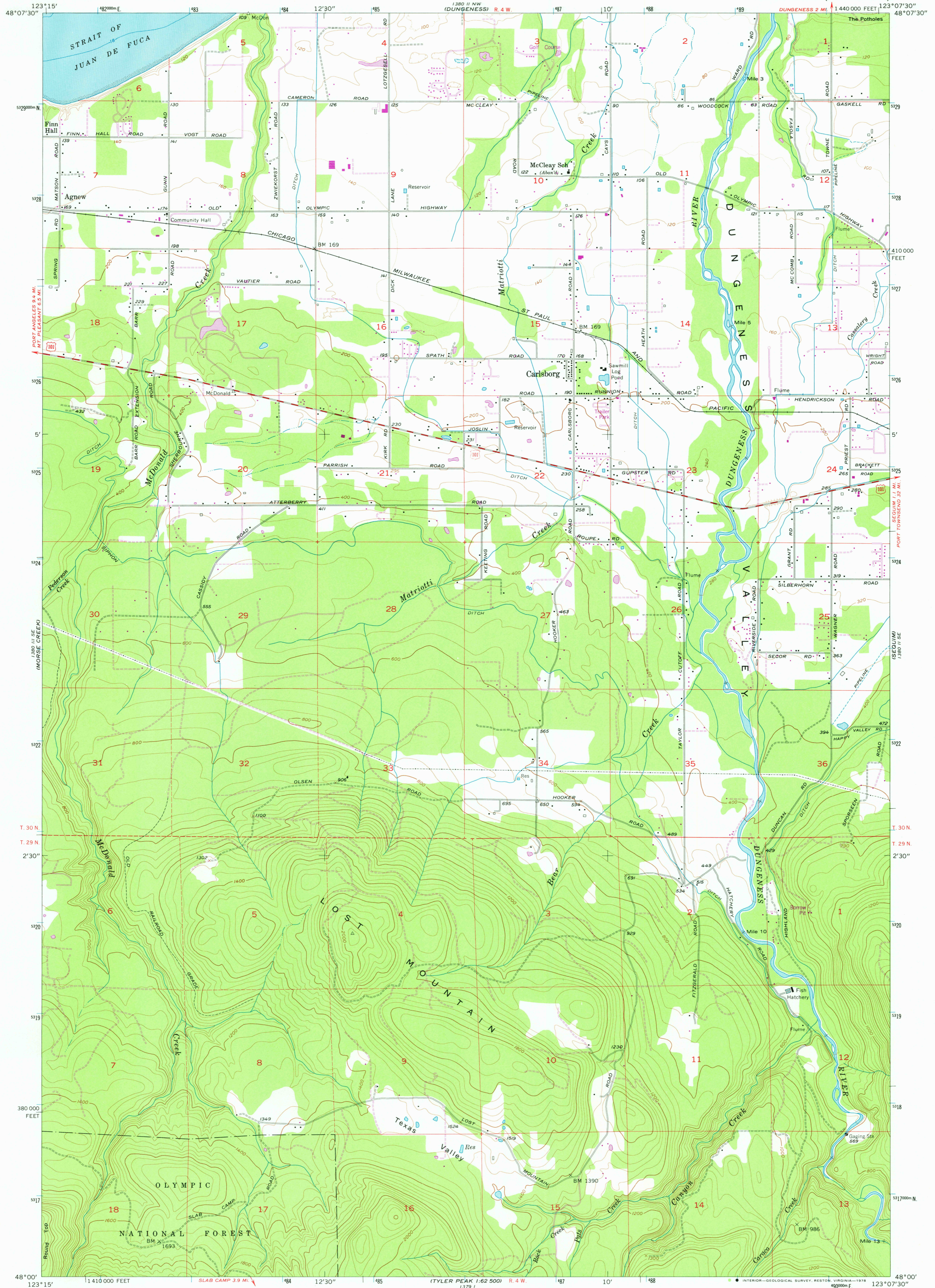


UNITED STATES
DEPARTMENT OF THE INTERIOR
GEOLOGICAL SURVEY

CARLSBORG QUADRANGLE
WASHINGTON—CLALLAM CO.
7.5 MINUTE SERIES (TOPOGRAPHIC)



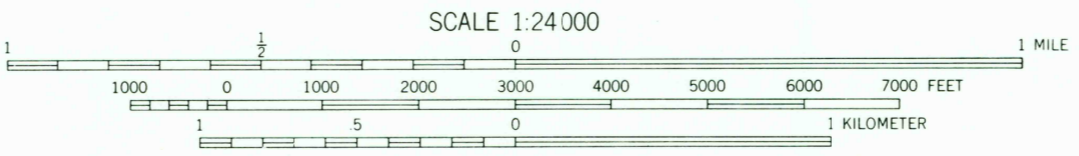
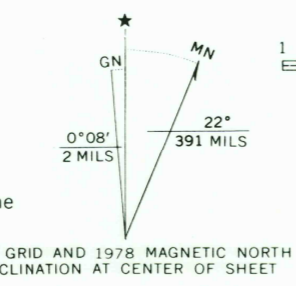
1391 N.W. (DUNGENESS)
1:62,500

1391 N.W. (DUNGENESS)
1:62,500

1391 N.W. (DUNGENESS)
1:62,500

1391 N.W. (DUNGENESS)
1:62,500

Mapped, edited, and published by the Geological Survey
Control by USGS and NOS/NOAA
Topography from aerial photographs by photogrammetric methods
Aerial photographs taken 1954. Field check 1956
Hydrography compiled from NOS/NOAA chart: 6382 (1955)
Polyconic projection. 1927 North American datum
10,000-foot grid based on Washington coordinate system, north zone
1000-meter Universal Transverse Mercator grid ticks,
zone 10, shown in blue
Dashed land lines indicate approximate locations
Unchecked elevations are shown in brown



CONTOUR INTERVAL 40 FEET
DASHED LINES REPRESENT 20-FOOT CONTOURS
NATIONAL GEODETIC VERTICAL DATUM OF 1929
DEPTH CURVES IN FEET-DATUM IS MEAN LOWER LOW WATER
SHORELINE SHOWN REPRESENTS THE APPROXIMATE LINE OF MEAN HIGH WATER
THE MEAN RANGE OF TIDE IS APPROXIMATELY 4 FEET



ROAD CLASSIFICATION
Medium-duty ——— Light-duty ———
Unimproved dirt - - - - - U. S. Route

USGS
Historical File
Topographic Division
CARLSBORG, WASH.
N4800—W12307.5/7.5
AUG 22 1978
1956
PHOTOREVISED 1978
AMS 1380 II SW—SERIES V891

THIS MAP COMPLIES WITH NATIONAL MAP ACCURACY STANDARDS
FOR SALE BY U. S. GEOLOGICAL SURVEY, DENVER, COLORADO 80225, OR RESTON, VIRGINIA 22092
A FOLDER DESCRIBING TOPOGRAPHIC MAPS AND SYMBOLS IS AVAILABLE ON REQUEST