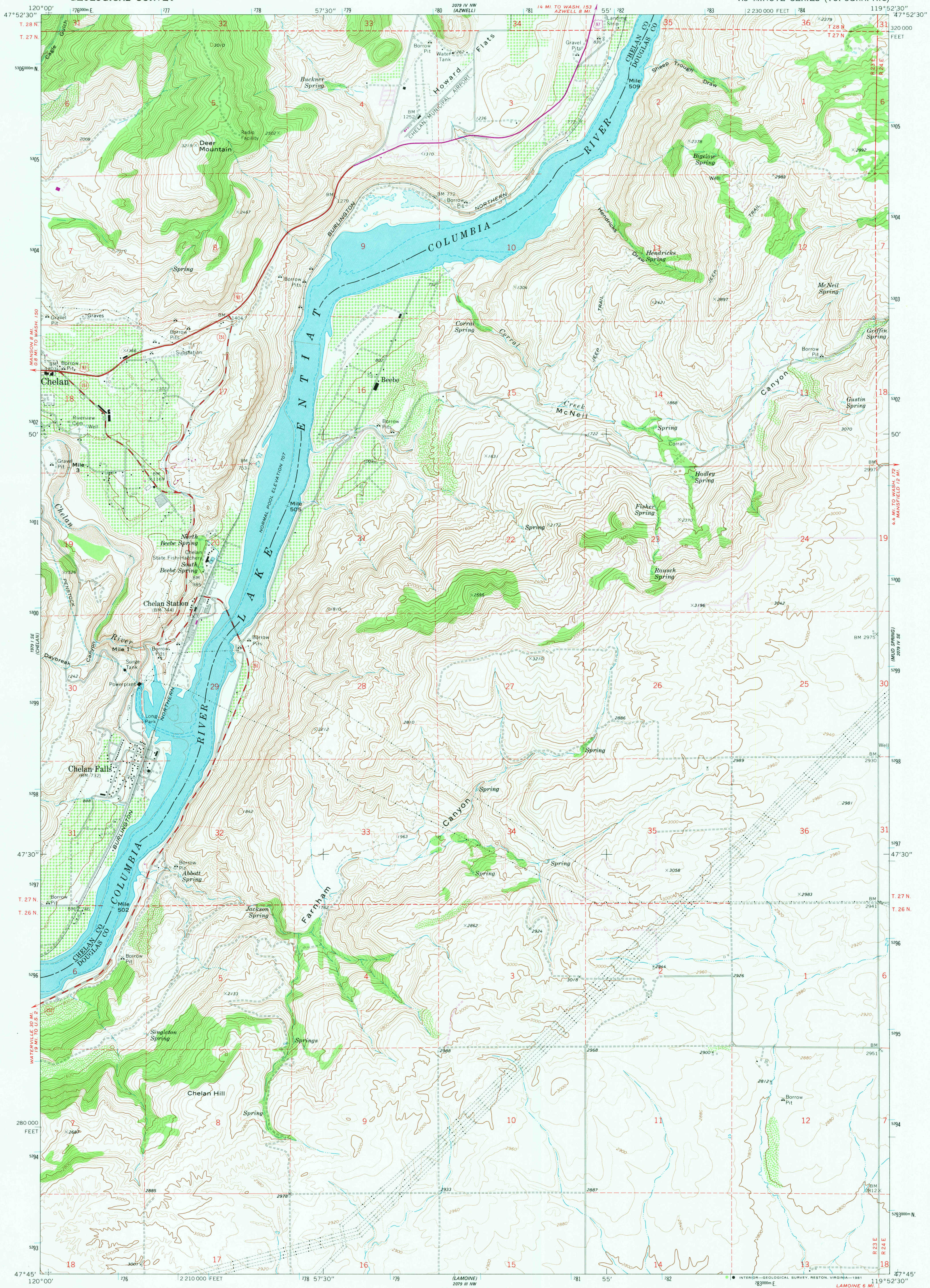


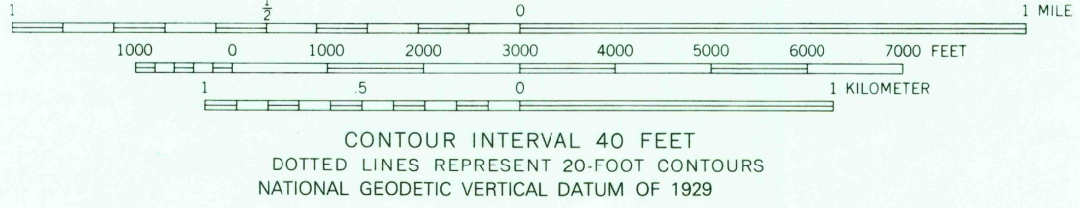
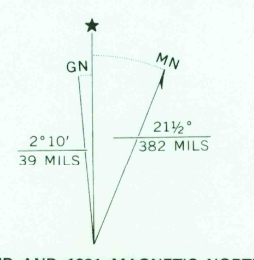
1924 NE
1924 SE
1924 SW
1924 NW
1924 E
1924 S
1924 W
1924 N

UNITED STATES
DEPARTMENT OF THE INTERIOR
GEOLOGICAL SURVEY

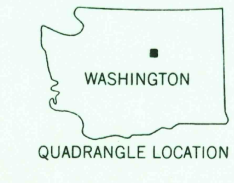
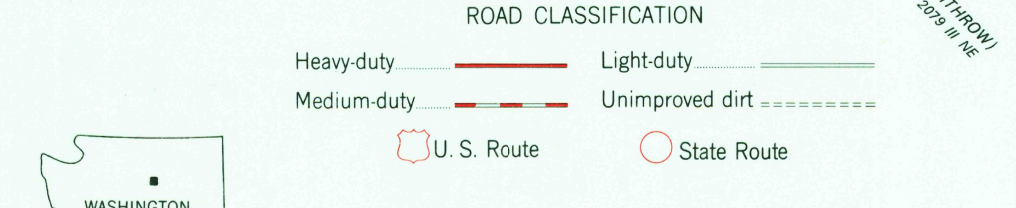
CHELAN FALLS QUADRANGLE
WASHINGTON
7.5 MINUTE SERIES (TOPOGRAPHIC)



Mapped, edited, and published by the Geological Survey
Control by USGS, NOS/NOAA
Topography by photogrammetric methods from aerial
photographs taken 1967. Field checked 1968
Polyconic projection 1927 North American datum
10,000-foot grid based on Washington coordinate system,
north zone
1000-meter Universal Transverse Mercator grid ticks,
zone 11, shown in blue
To place on the predicted North American Datum 1983,
move the projection lines 19 meters north and
87 meters east as shown by dashed corner ticks
Fins red dashed lines indicate selected fence lines



CONTOUR INTERVAL 40 FEET
DOTTED LINES REPRESENT 20-FOOT CONTOURS
NATIONAL GEODETIC VERTICAL DATUM OF 1929



CHELAN FALLS, WASH.
N4745 - W11952.5/7.5
1968
PHOTOREVISED 1981
DMA 2079 IV SW - SERIES V891

THIS MAP COMPLIES WITH NATIONAL MAP ACCURACY STANDARDS
FOR SALE BY U.S. GEOLOGICAL SURVEY, DENVER, COLORADO 80225, OR RESTON, VIRGINIA 22092
A FOLDER DESCRIBING TOPOGRAPHIC MAPS AND SYMBOLS IS AVAILABLE ON REQUEST

Revisions shown in purple compiled from aerial photographs
taken 1978 and other source data. This information not
field checked. Map edited 1981

RETURN TO:
USGS AND HISTORICAL MAP ARCHIVES

DEC 15 1991

2250