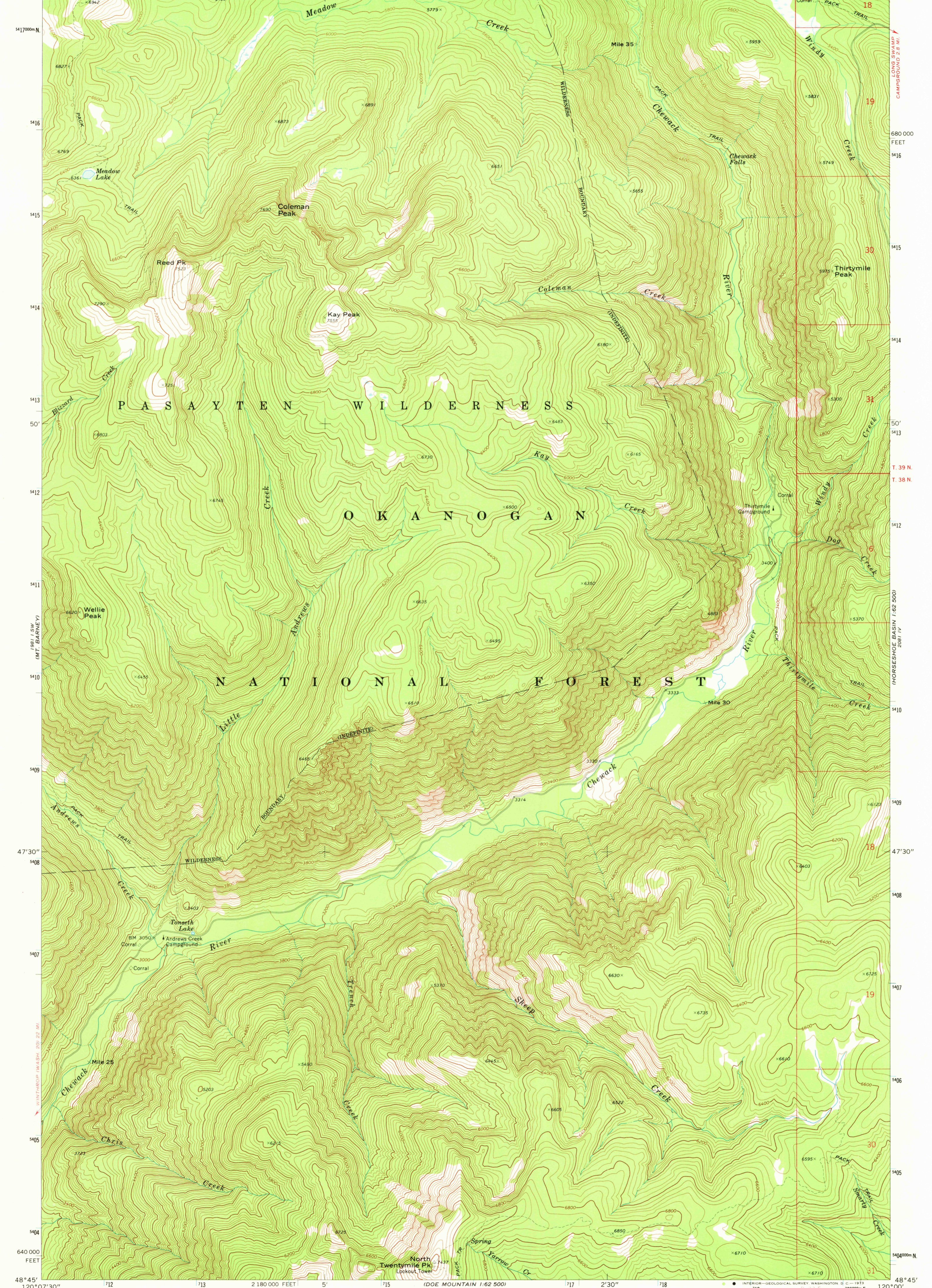


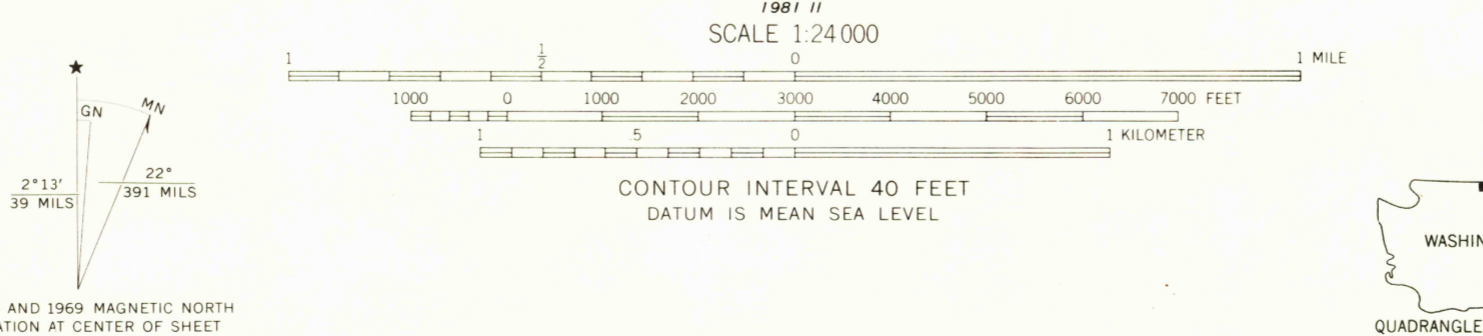
UNITED STATES  
DEPARTMENT OF THE INTERIOR  
GEOLOGICAL SURVEY

COLEMAN PEAK QUADRANGLE  
WASHINGTON—OKANOGAN CO.  
7.5 MINUTE SERIES (TOPOGRAPHIC)

120°07'30" 712000m E 713 5' 714 1981 I NE (BAUERMAN RIDGE) 716 2'30" POCKET LAKE 0.9 MI 718 R 23 E 2 200 000 FEET 120°00' 48°52'30"



Mapped, edited, and published by the Geological Survey  
Control by USGS and USC&GS  
Topography by photogrammetric methods from aerial photographs taken 1968. Field checked 1969  
Polyconic projection. 1927 North American datum  
10,000-foot grid based on Washington coordinate system, north zone  
100-meter Universal Transverse Mercator grid ticks, zone 10, shown in blue  
Where omitted, land lines have not been established



ROAD CLASSIFICATION  
Primary highway, hard surface  
Secondary highway, hard surface  
Light-duty road, hard or improved surface  
Unimproved road  
Interstate Route  
U. S. Route  
State Route



COLEMAN PEAK, WASH.  
N4845—W12000/7.5

JAN 8 1973

THIS MAP COMPLIES WITH NATIONAL MAP ACCURACY STANDARDS  
FOR SALE BY U. S. GEOLOGICAL SURVEY, DENVER, COLORADO 80225, OR WASHINGTON, D. C. 20242  
A FOLDER DESCRIBING TOPOGRAPHIC MAPS AND SYMBOLS IS AVAILABLE ON REQUEST

1969  
AMS 1981 I SE—SERIES V891

U.S. GEOLOGICAL SURVEY  
TOPOGRAPHIC DIVISION

2035