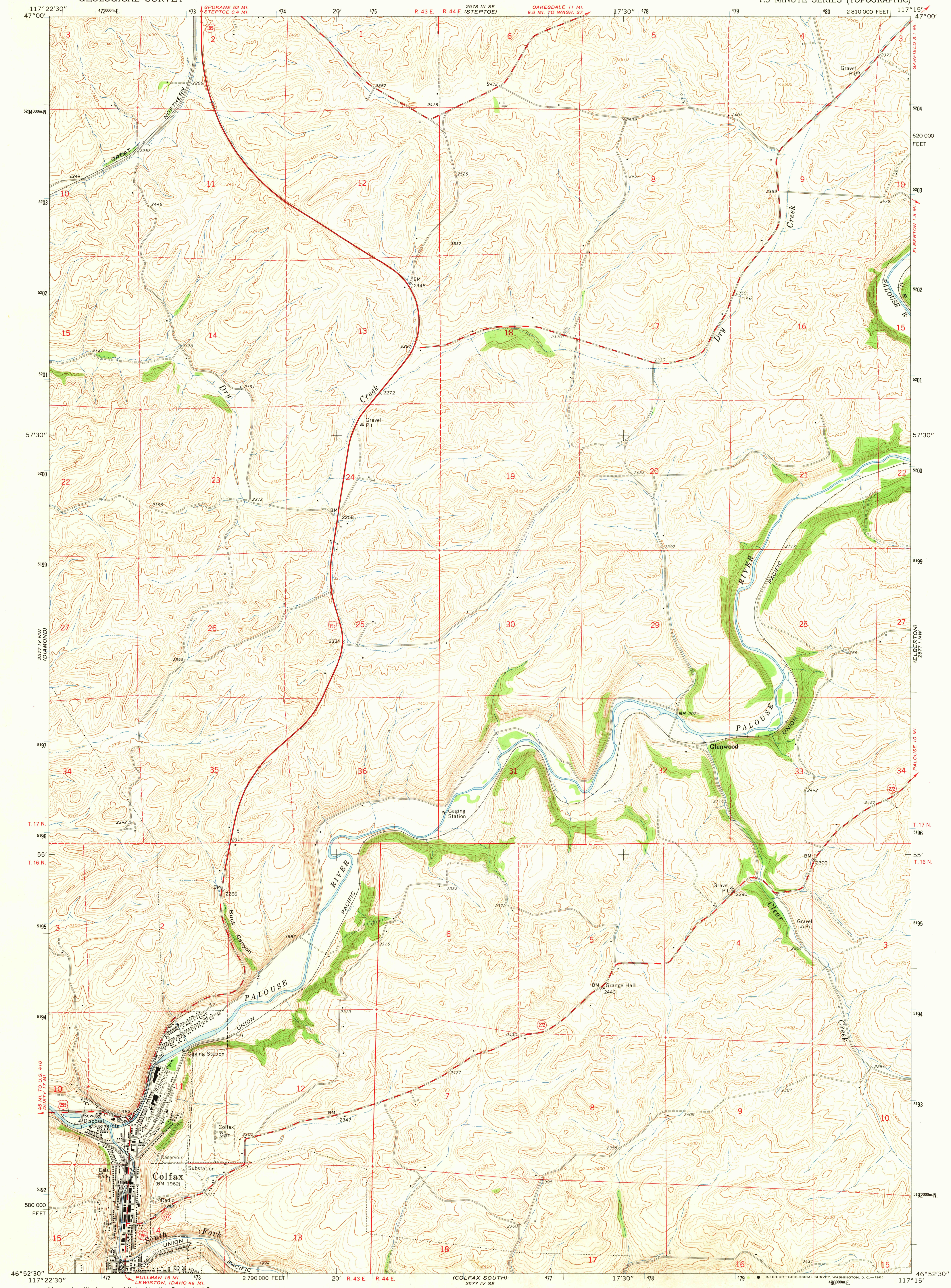


2578 IV SW
(THORNTON)

UNITED STATES
DEPARTMENT OF THE INTERIOR
GEOLOGICAL SURVEY

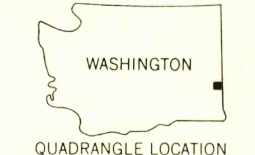
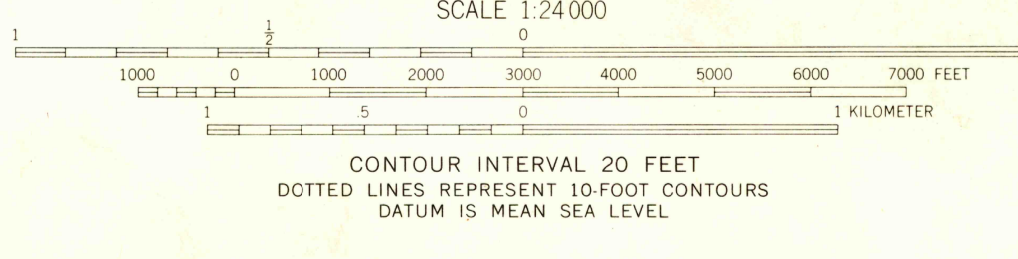
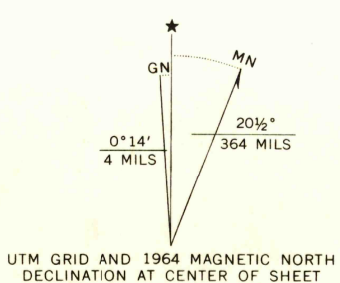
COLFAX NORTH QUADRANGLE
WASHINGTON-WITMAN CO.
7.5 MINUTE SERIES (TOPOGRAPHIC)

2578 IV SW
(GARFIELD)



2577 IV SW
(WILCOX)

Mapped, edited, and published by the Geological Survey
Control by USGS and USC&GS
Topography by photogrammetric methods from aerial
photographs taken 1961. Field checked 1964
Polyconic projection. 1927 North American datum
10,000-foot grid based on Washington coordinate system,
south zone
1000-meter Universal Transverse Mercator grid ticks,
zone 11, shown in blue



ROAD CLASSIFICATION
Heavy-duty ——— Light-duty ———
Medium-duty ——— Unimproved dirt ———
U.S. Route ——— State Route ———

COLFAX NORTH, WASH.
N4652.5—W11715.7.5

1964

AMS 2577 IV NE—SERIES V891

USGS
Historical File
Topographic Division

JUL 27 1965

U.S.G.S.
FILE COPY
TOPOGRAPHIC DIVISION