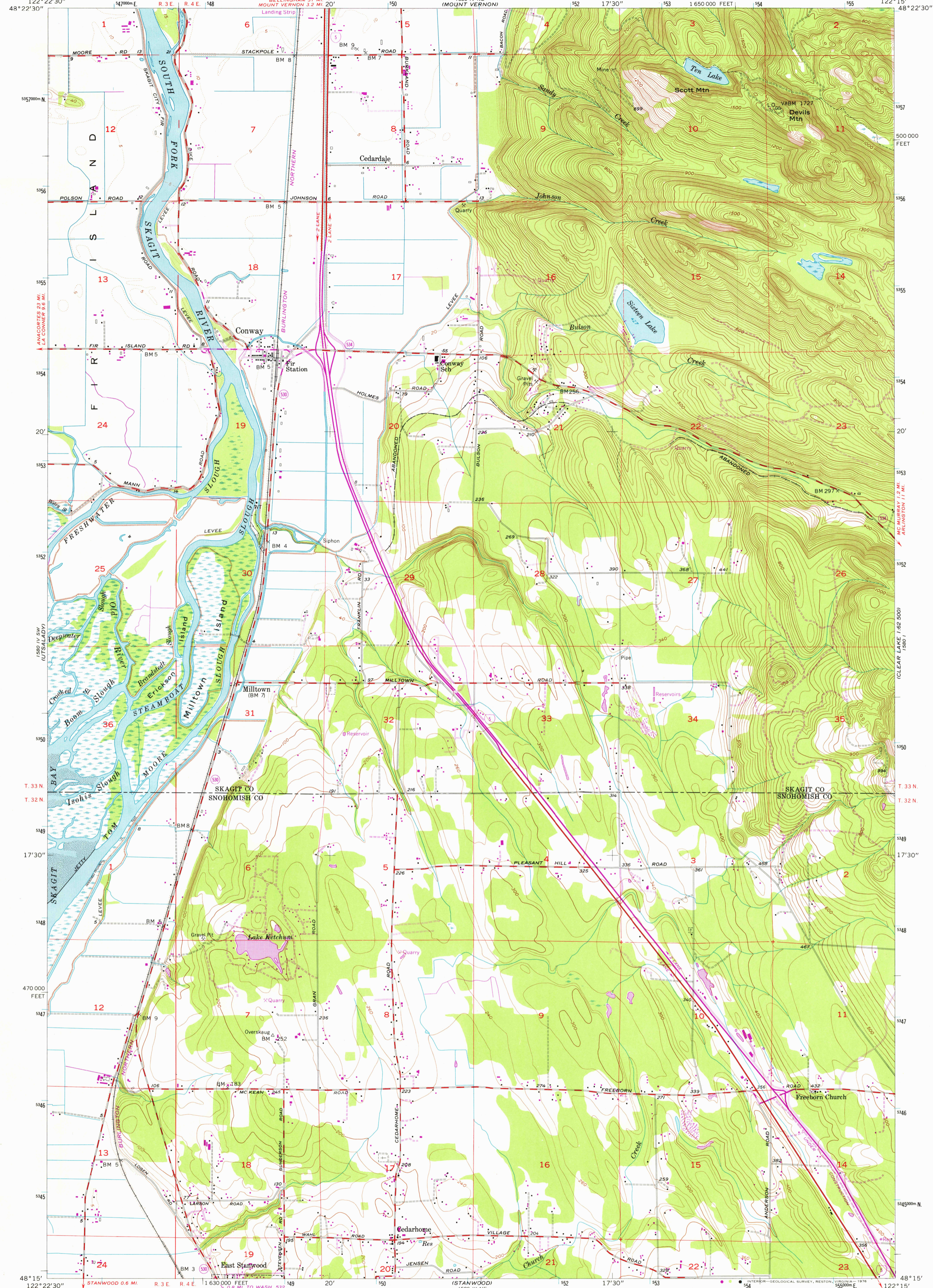


150 IV NW
(LA CONNER)

UNITED STATES
DEPARTMENT OF THE INTERIOR
GEOLOGICAL SURVEY

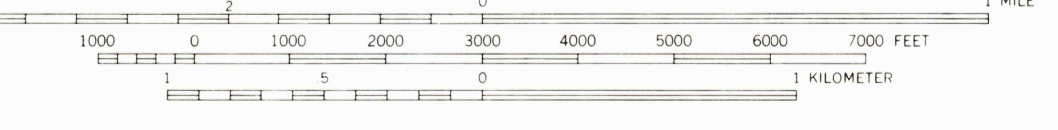
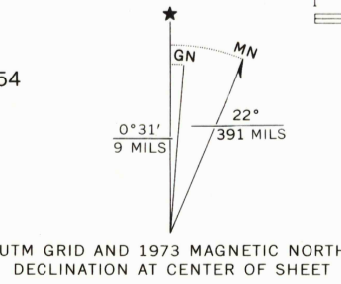
CONWAY QUADRANGLE
WASHINGTON
7.5 MINUTE SERIES (TOPOGRAPHIC)

158 I
(CLEAR LAKE 1:62,500)



150 IV NW
(LA CONNER)

Mapped, edited, and published by the Geological Survey
Control by USGS and USC&GS
Topography from aerial photographs by multiplex methods and by plane-table surveys 1956. Aerial photographs taken 1954
Polyconic projection. 1927 North American datum
10,000-foot grid based on Washington coordinate system, north zone
1000-meter Universal Transverse Mercator grid ticks, zone 10, shown in blue
Dashed land lines indicate approximate locations
Unchecked elevations are shown in brown
Revisions shown in purple compiled from aerial photographs taken 1968 and 1973. This information not field checked



SCALE 1:24,000
CONTOUR INTERVAL 20 FEET
DASHED LINES REPRESENT 5-FOOT CONTOURS
NATIONAL GEODETIC VERTICAL DATUM OF 1929
SHORELINE SHOWN REPRESENTS THE APPROXIMATE LINE OF MEAN HIGH WATER
THE MEAN RANGE OF TIDE IS APPROXIMATELY 8 FEET
THIS MAP COMPLIES WITH NATIONAL MAP ACCURACY STANDARDS
FOR SALE BY U. S. GEOLOGICAL SURVEY, DENVER, COLORADO 80225, OR RESTON, VIRGINIA 22092
A FOLDER DESCRIBING TOPOGRAPHIC MAPS AND SYMBOLS IS AVAILABLE ON REQUEST



ROAD CLASSIFICATION
Heavy-duty ——— Light-duty ———
Medium-duty - - - - - Unimproved dirt - - - - -
Interstate Route (red circle) State Route (black circle)

USGS
HISTORICAL FILE
TOPOGRAPHIC DIVISION

CONWAY, WASH.
N4815-W12215/7.5
1956
PHOTOREVISED 1968 AND 1973
AMS 1580 IV SE—SERIES V891

MAR 0 1 1976

158 I
(CLEAR LAKE 1:62,500)

158 I
(CLEAR LAKE 1:62,500)