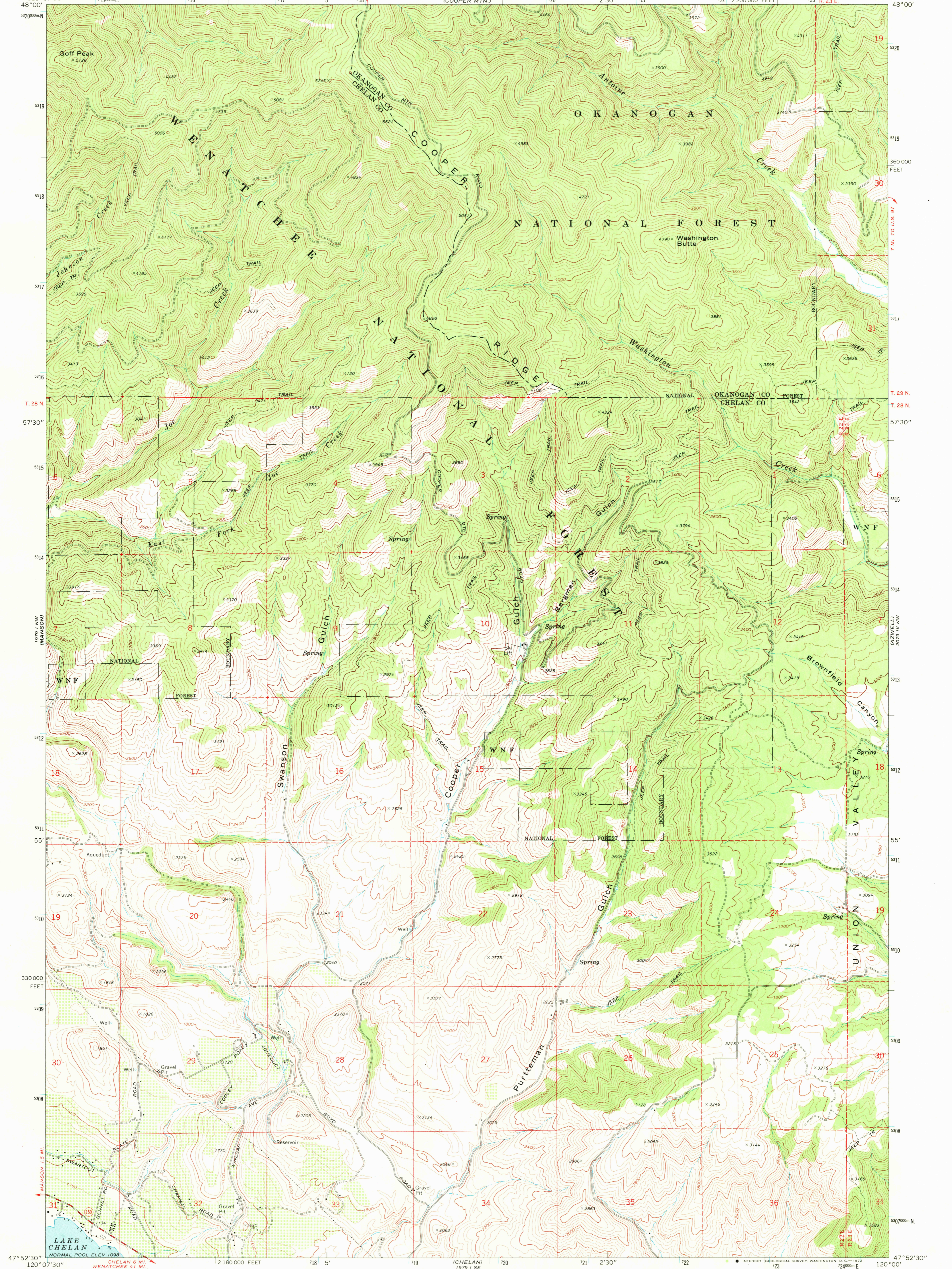
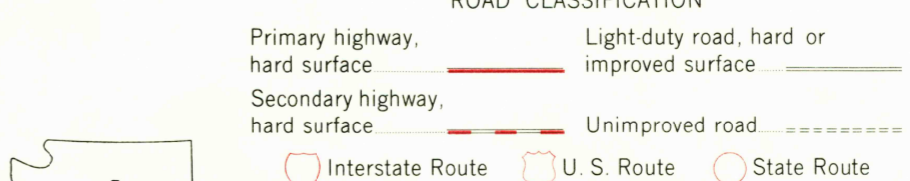
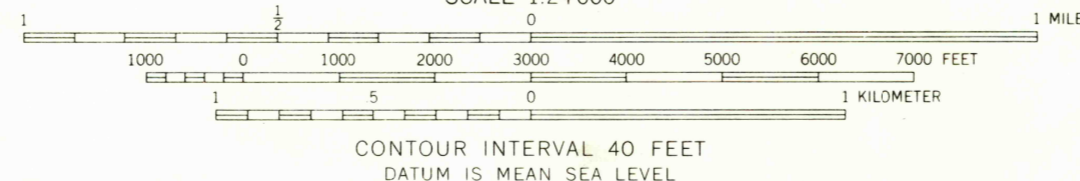
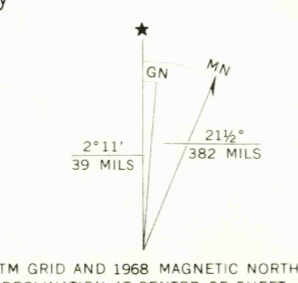


1980 U.S.M.  
1:62,500

1980 U.S.M.  
1:62,500



Mapped, edited, and published by the Geological Survey  
Control by USGS and USC&GS  
Topography by photogrammetric methods from aerial photographs taken 1967. Field checked 1968  
Polyconic projection. 1927 North American datum  
10,000-foot grid based on Washington coordinate system, north zone  
1000-meter Universal Transverse Mercator grid ticks, zone 10, shown in blue  
Fine red dashed lines indicate selected fence lines  
Where omitted, land lines have not been established



THIS MAP COMPLIES WITH NATIONAL MAP ACCURACY STANDARDS  
FOR SALE BY U. S. GEOLOGICAL SURVEY, DENVER, COLORADO 80225, OR WASHINGTON, D. C. 20242  
A FOLDER DESCRIBING TOPOGRAPHIC MAPS AND SYMBOLS IS AVAILABLE ON REQUEST

USGS  
Historical File  
Topographic Division

COOPER RIDGE, WASH.  
N4752.5—W12000/7.5  
1968

AMS 1979 I NE—SERIES V891

USGS  
HISTORICAL FILE  
TOPOGRAPHIC DIVISION

JUN 01 1972  
2250