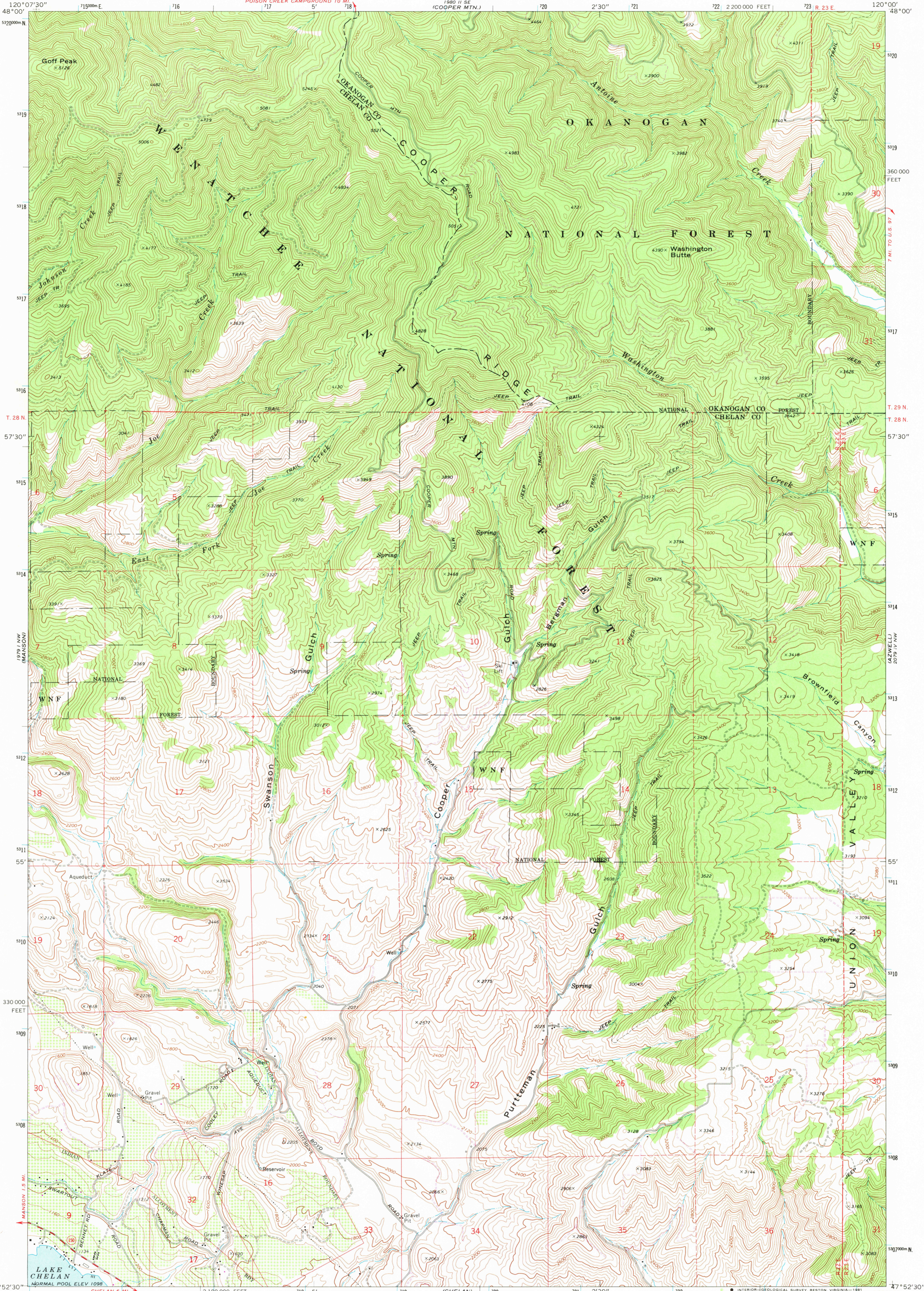


1981 II SE
055 FEET

UNITED STATES
DEPARTMENT OF THE INTERIOR
GEOLOGICAL SURVEY

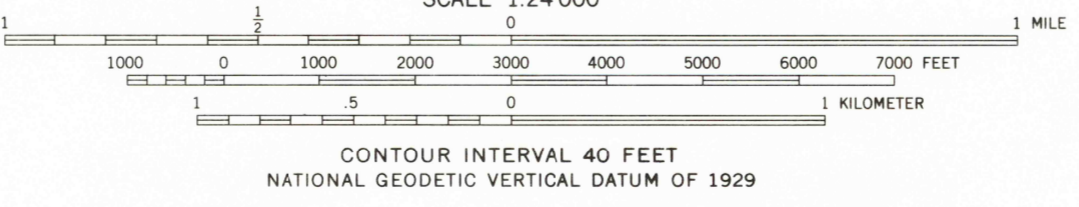
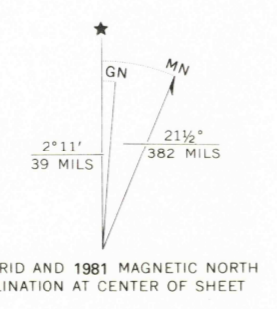
COOPER RIDGE QUADRANGLE
WASHINGTON
7.5 MINUTE SERIES (TOPOGRAPHIC)

1981 II SE
166 FEET



1979 I NW
1979 I SW

Maped, edited, and published by the Geological Survey
Control by USGS and NOS/NOAA
Topography by photogrammetric methods from aerial
photographs taken 1967. Field checked 1968.
Polyconic projection. 1927 North American datum
10,000-foot grid based on Washington coordinate system,
north zone
1000-meter Universal Transverse Mercator grid ticks,
zone 10, shown in blue
To place on the predicted North American Datum 1983
move the projection lines 20 meters north and
67 meters east as shown by dashed corner ticks
Fine red dashed lines indicate selected fence lines
Where omitted, land lines have not been established
There may be private inholdings within the boundaries of
the National or State reservations shown on this map



ROAD CLASSIFICATION

Primary highway, hard surface	Light-duty road, hard or improved surface
Secondary highway, hard surface	Unimproved road
Interstate Route	U. S. Route
	State Route

THIS MAP COMPLIES WITH NATIONAL MAP ACCURACY STANDARDS
FOR SALE BY U. S. GEOLOGICAL SURVEY, DENVER, COLORADO 80225, OR RESTON, VIRGINIA 22092
A FOLDER DESCRIBING TOPOGRAPHIC MAPS AND SYMBOLS IS AVAILABLE ON REQUEST

Revisions shown in purple compiled from aerial photographs
taken 1978 and other source data. This information not
field checked. Map edited 1981

COOPER RIDGE, WASH.
N4752.5—W12000/7.5
1968
PHOTOREVISED 1981
DMA 1979 I NE—SERIES V891

RETURN TO:
USGS AND HISTORICAL MAP ARCHIVES

DEC 10 1981

2250