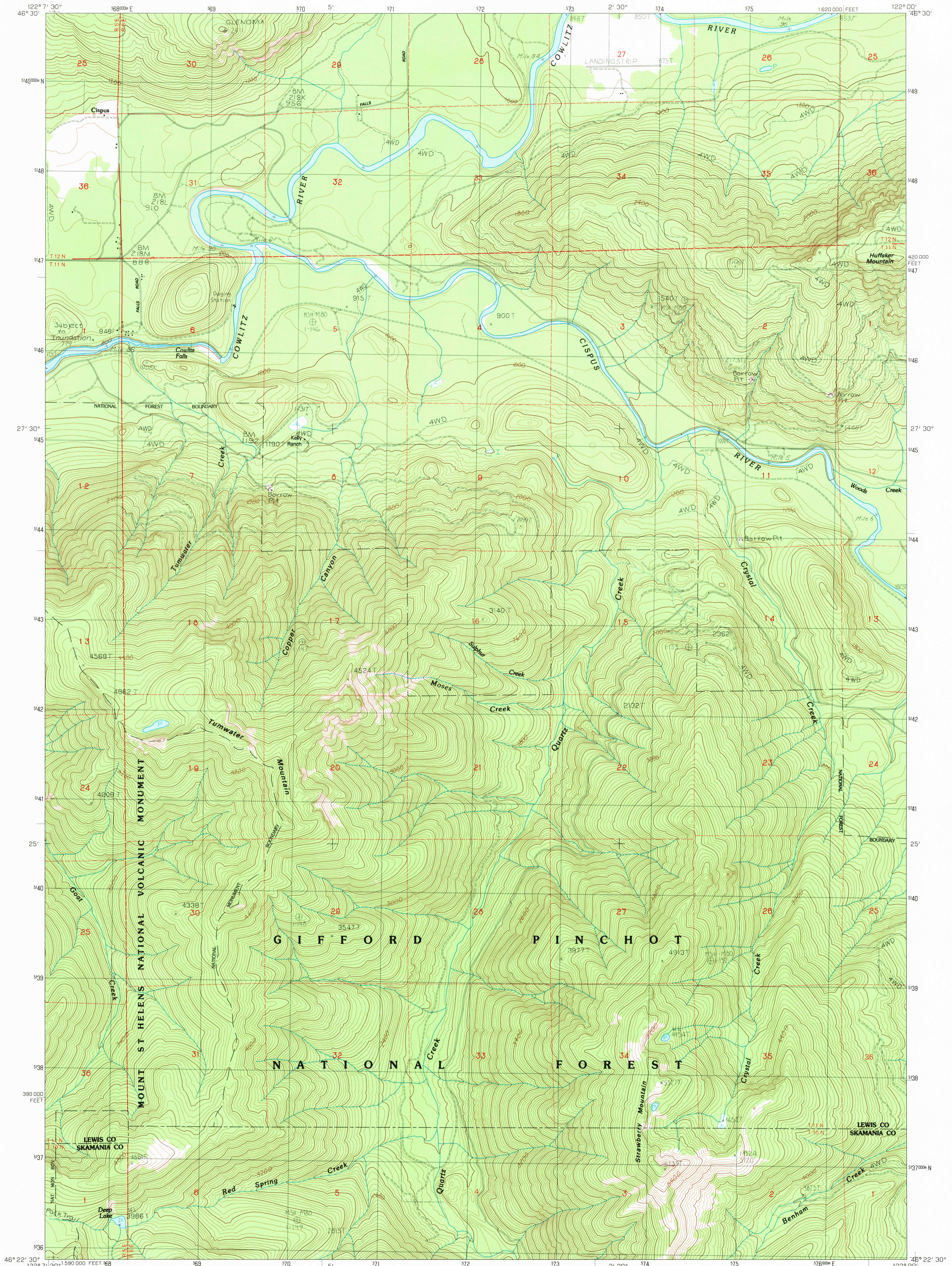


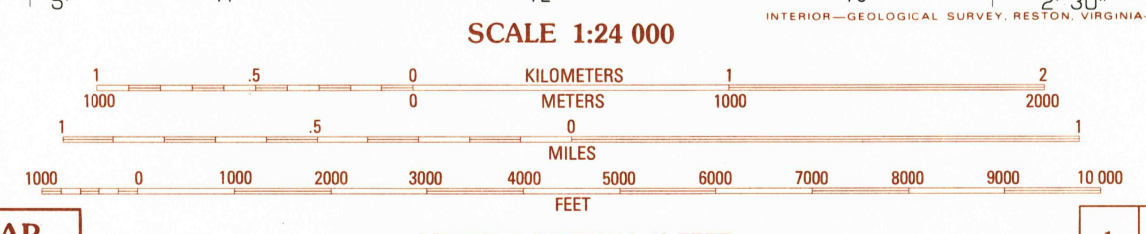
UNITED STATES
DEPARTMENT OF THE INTERIOR
GEOLOGICAL SURVEY

COWLITZ FALLS QUADRANGLE
WASHINGTON
7.5 MINUTE SERIES (TOPOGRAPHIC)



PRODUCED BY THE UNITED STATES GEOLOGICAL SURVEY
CONTROL BY USGS, NOS/NOAA
COMPILED FROM AERIAL PHOTOGRAPHS TAKEN 1980
FIELD CHECKED 1981. MAP EDITED 1983
PROJECTION LAMBERT CONFORMAL CONIC
GRID: 1000-METER UNIVERSAL TRANSVERSE MERCATOR, ZONE 10
10,000-FOOT STATE GRID TICKS WASHINGTON, SOUTH ZONE
UTM GRID DECLINATION 0°41' EAST
1980 MAGNETIC NORTH DECLINATION 30' EAST
VERTICAL DATUM: NATIONAL GEODETIC VERTICAL DATUM OF 1929
HORIZONTAL DATUM: 1927 NORTH AMERICAN DATUM
To place on the predicted North American Datum of 1983,
move the projection lines as shown by dashed corner ticks
(22 meters north / 92 meters east)
There may be private inholdings within the boundaries of any
Federal and State Reservations shown on this map
Areas covered by dashed light-blue pattern
are subject to controlled inundation to 779 feet

PROVISIONAL MAP
Produced from original
manuscript drawings. Informa-
tion shown as of date of
field check.



CONTOUR INTERVAL 40 FEET
SUPPLEMENTARY CONTOUR INTERVAL 20 FEET
To convert meters to feet multiply by 3.2808
To convert feet to meters multiply by 0.3048

WASHINGTON

QUADRANGLE LOCATION

1	2	3	1	Glenoma
2	3	4	2	Kiona
3	4	5	3	Randle
4	5	6	4	Vanson Peak
5	6	7	5	Greenhorn Buttes
6	7	8	6	Spirit Lake West
7	8		7	Spirit Lake East
8			8	French Butte

ADJOINING 7.5' QUADRANGLE NAMES

ROAD LEGEND

Improved Road
Unimproved Road
Trail

○ Interstate Route □ U.S. Route ○ State Route

COWLITZ FALLS, WASH.
PROVISIONAL EDITION 1983

USGS AND HISTORICAL MAP ARCHIVES