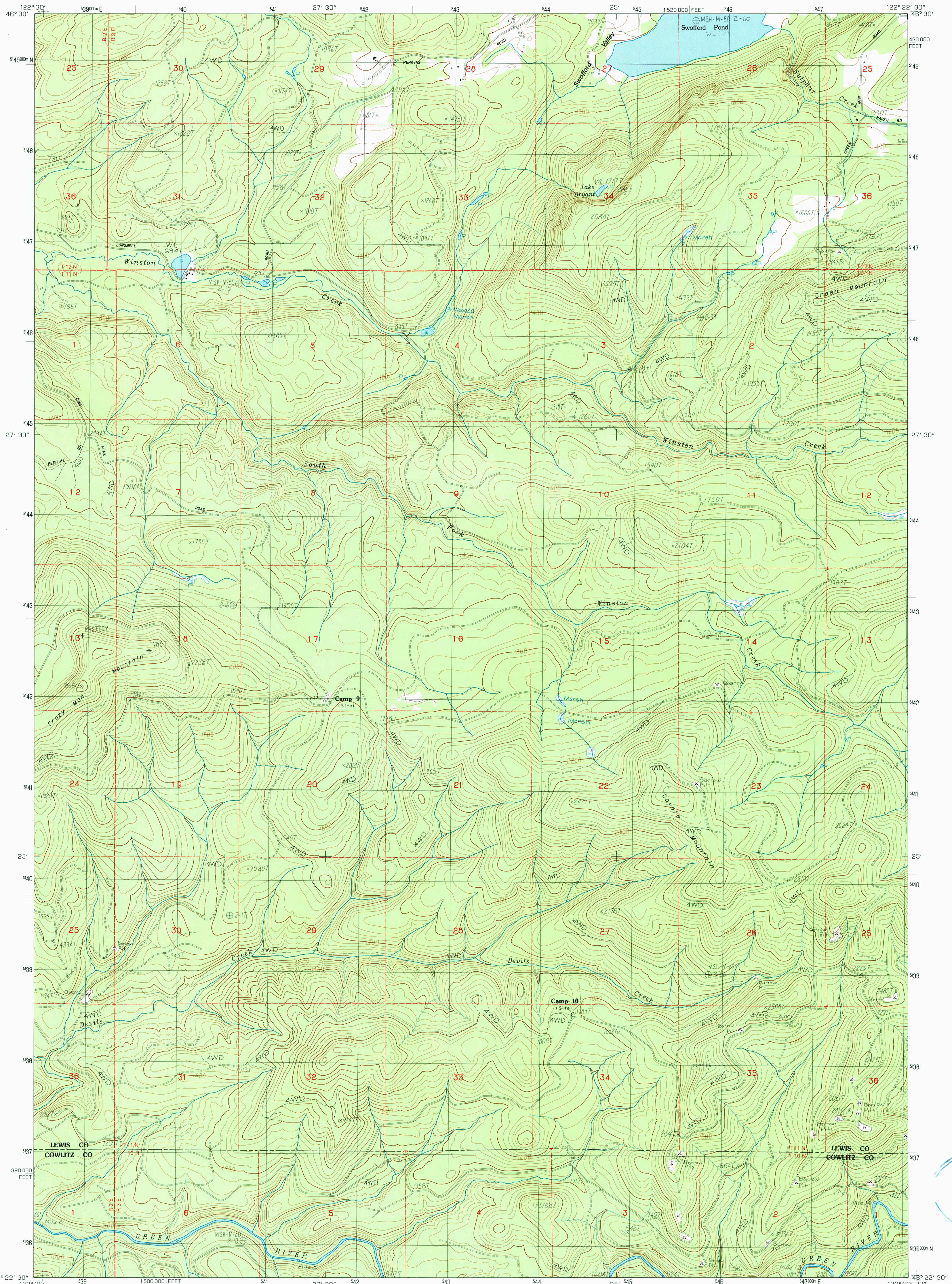


UNITED STATES  
DEPARTMENT OF THE INTERIOR  
GEOLOGICAL SURVEY

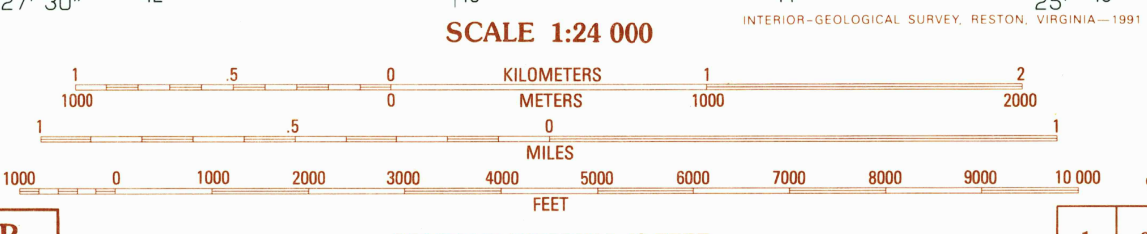
COYOTE MTN. QUADRANGLE  
WASHINGTON  
7.5 MINUTE SERIES (TOPOGRAPHIC)



USGS NMD HISTORICAL MAP  
MAY 30 1991  
REC'D FILE COPY

PRODUCED BY THE UNITED STATES GEOLOGICAL SURVEY CONTROL BY USGS, NOS/NOAA COMPILED FROM AERIAL PHOTOGRAPHS TAKEN 1988 FIELD CHECKED 1981. MAP EDITED 1983 PROJECTION LAMBERT CONFORMAL CONIC GRID 1000-METER UNIVERSAL TRANSVERSE MERCATOR ZONE 10 10,000-FOOT STATE GRID TICKS WASHINGTON, SOUTH ZONE UTM GRID DECLINATION 092° EAST 1980 MAGNETIC NORTH DECLINATION 2009° EAST VERTICAL DATUM NATIONAL GEODETIC VERTICAL DATUM OF 1929 HORIZONTAL DATUM 1927 NORTH AMERICAN DATUM To place on the predicted North American Datum of 1983, move the projection lines as shown by dashed corner ticks (23 meters north / 93 meters east) There may be private inholdings within the boundaries of any Federal and State Reservations shown on this map Areas covered by dashed light-blue pattern are subject to controlled inundation to 779 feet

**PROVISIONAL MAP**  
Produced from original manuscript drawings. Information shown as of date of field check.



SCALE 1:24 000  
CONTOUR INTERVAL 40 FEET

To convert meters to feet multiply by 3.2808  
To convert feet to meters multiply by 0.3048



1	2	3	1 Mayfield Lake
2	3	4	2 Moserrock
3	4	5	3 Moron
4	5	6	4 Hatchet Mtn.
5	6	7	5 Winters Mtn.
6	7	8	6 Toule Mtn.
7	8		7 Hoffstadt Mtn
8			8 Elk Rock

**ROAD LEGEND**  
Improved Road.....  
Unimproved Road.....  
Trail.....  
Interstate Route U.S. Route State Route

**COYOTE MTN., WASH.**  
PROVISIONAL EDITION 1983