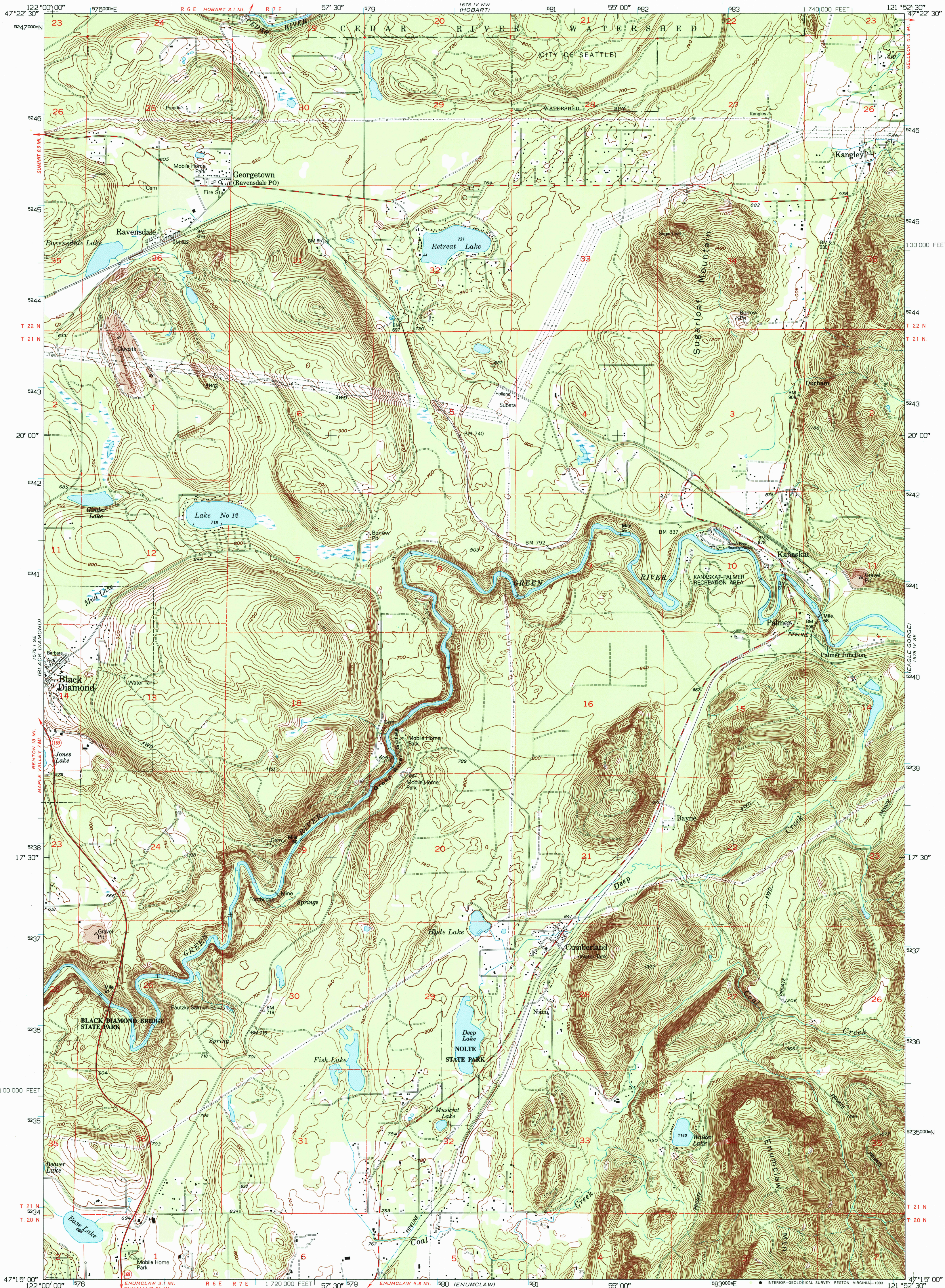


UNITED STATES  
DEPARTMENT OF THE INTERIOR  
GEOLOGICAL SURVEY

CUMBERLAND QUADRANGLE  
WASHINGTON-KING CO.  
7.5 MINUTE SERIES (TOPOGRAPHIC)



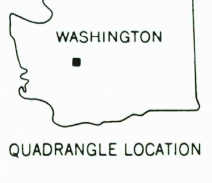
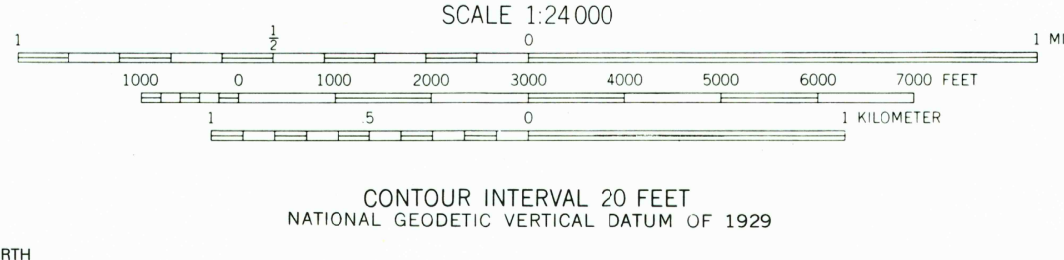
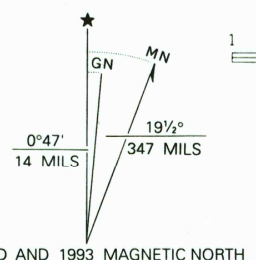
Produced by the United States Geological Survey  
Control by USGS, NOS/NOAA and DMA

Compiled from aerial photographs taken 1952. Revised from aerial  
photographs taken 1986 and other sources. Field checked 1990  
Map edited 1993

1927 North American Datum (NAD 27). Projection and  
10000-foot ticks: Washington Coordinate System, north zone  
(Lambert Conformal Conic)

Blue 1000-meter Universal Transverse Mercator ticks, zone 10  
North American Datum of 1983 (NAD 83) is shown by dashed  
corner ticks. The values of the shift between NAD 27 and NAD 83  
for 7.5-minute intersections are given in USGS Bulletin 1875

There may be private inholdings within the boundaries of the  
National or State reservations shown on this map  
Travel within Cedar River Watershed area is restricted



ROAD CLASSIFICATION	
Primary highway, hard surface	Light-duty road, hard or improved surface
Secondary highway, hard surface	Unimproved road
Interstate Route	U. S. Route
	State Route

CUMBERLAND, WASH.  
47121-C8-TF-024

1993

DMA 1678 IV SW-SERIES V891

