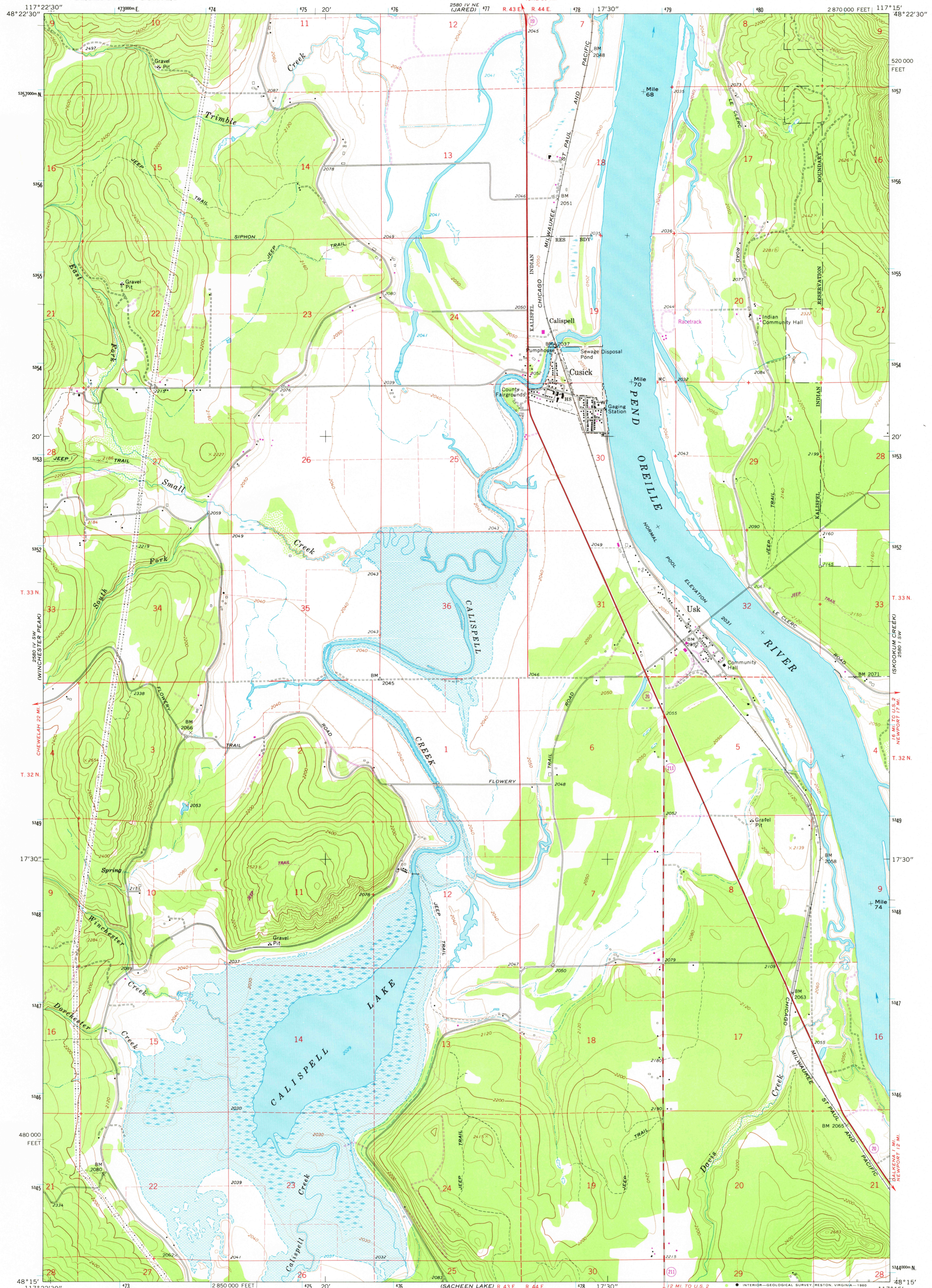


UNITED STATES  
DEPARTMENT OF THE INTERIOR  
GEOLOGICAL SURVEY

CUSICK QUADRANGLE  
WASHINGTON—PEND OREILLE CO.  
7.5 MINUTE SERIES (TOPOGRAPHIC)



Mapped, edited, and published by the Geological Survey

Control by USGS and NOS/NOAA

Topography by photogrammetric methods from aerial photographs taken 1965 and planetable surveys 1968

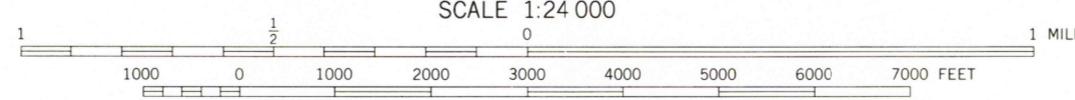
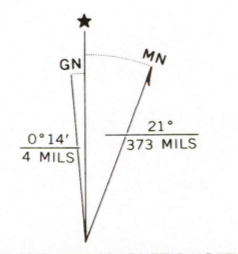
Polyconic projection. 1927 North American datum 10,000-foot grid based on Washington coordinate system, north zone

1000-meter Universal Transverse Mercator grid ticks, zone 11, shown in blue

To place on the predicted North American Datum 1983 move the projection lines 14 meters north and 79 meters east as shown by dashed corner ticks

Areas covered by dashed light-blue pattern are subject to controlled inundation

There may be private inholdings within the boundaries of the National or State reservations shown on this map



CONTOUR INTERVAL 40 FEET  
DOTTED LINES REPRESENT 10-FOOT CONTOURS  
NATIONAL GEODETIC DATUM OF 1929

THIS MAP COMPLIES WITH NATIONAL MAP ACCURACY STANDARDS  
FOR SALE BY U. S. GEOLOGICAL SURVEY, DENVER, COLORADO 80225, OR RESTON, VIRGINIA 22092  
A FOLDER DESCRIBING TOPOGRAPHIC MAPS AND SYMBOLS IS AVAILABLE ON REQUEST



QUADRANGLE LOCATION

ROAD CLASSIFICATION

Primary highway, all weather, hard surface	Light-duty road, all weather, improved surface
Secondary highway, all weather, hard surface	Unimproved road, fair or dry weather
State Route	

CUSICK, WASH.  
N4815—W11715/7.5

1968  
PHOTO REVISSED 1980  
DMA 2560 IV SE—SERIES V691

Revisions shown in purple compiled by the State of Washington from aerial photographs taken 1977 and other source data. This information not field checked  
Map edited 1980

USGS  
Historical File  
National Mapping Division

MAR 12 1981

1950