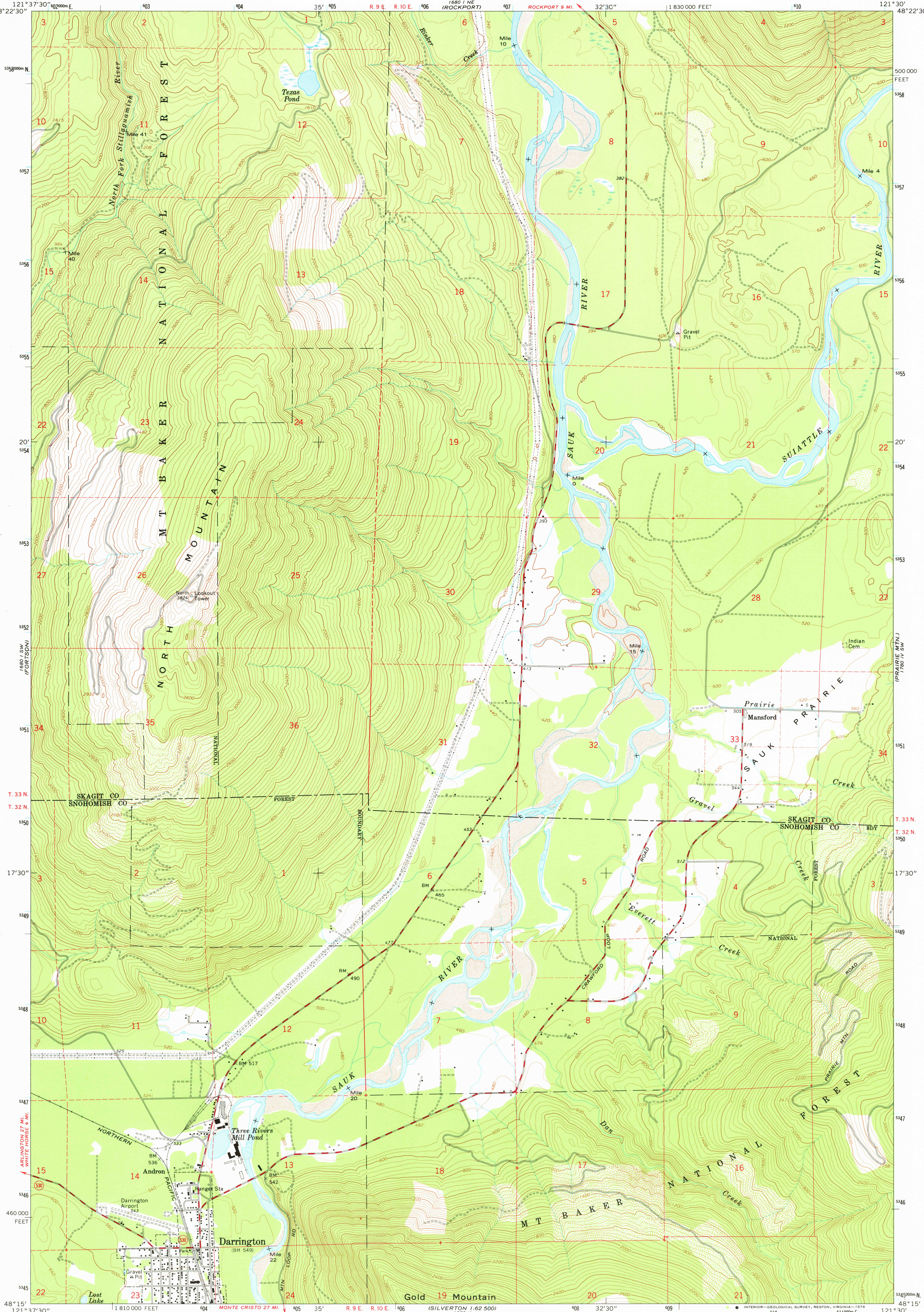


GRINNEY PEAK  
1880 1 NW  
121° 37' 30" W  
48° 22' 30" N

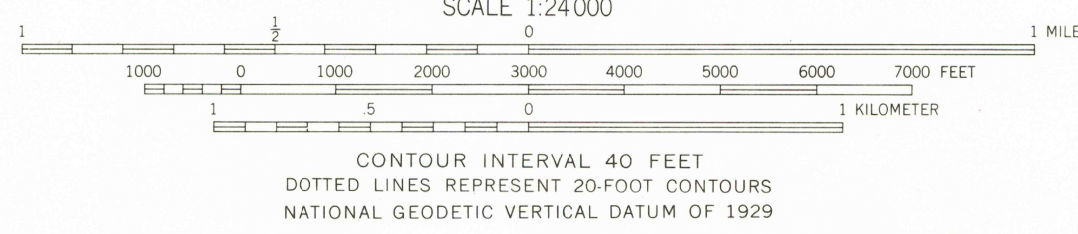
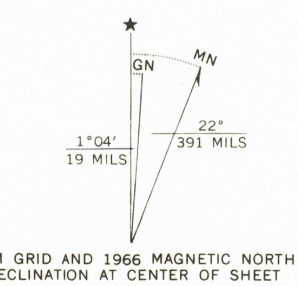
UNITED STATES  
DEPARTMENT OF THE INTERIOR  
GEOLOGICAL SURVEY

DARRINGTON QUADRANGLE  
WASHINGTON  
7.5 MINUTE SERIES (TOPOGRAPHIC)

WHITE CLIFF MTN.  
1880 1 NW  
121° 37' 30" W  
48° 22' 30" N



Mapped, edited, and published by the Geological Survey  
Control by USGS and USC&GS  
Topography by photogrammetric methods from aerial  
photographs taken 1963. Field checked 1966  
Polyconic projection, 1927 North American datum  
10,000-foot grid based on Washington coordinate system,  
north zone  
1000-meter Universal Transverse Mercator grid ticks,  
zone 10, shown in blue  
Fine red dashed lines indicate selected fence lines  
Where omitted, land lines have not been established



ROAD CLASSIFICATION  
Medium-duty ——— Light-duty ———  
Unimproved dirt =====  
State Route ○

DARRINGTON, WASH.  
N4815—W12130/7.5

FOR SALE BY U. S. GEOLOGICAL SURVEY, DENVER, COLORADO 80225, OR RESTON, VIRGINIA 22092  
A FOLDER DESCRIBING TOPOGRAPHIC MAPS AND SYMBOLS IS AVAILABLE ON REQUEST

USGS  
Historical File  
Topographic Division

1966  
AMS 1680 1 SE—SERIES V891

RETURN TO:  
USGS AND HISTORICAL MAP ARCHIVES

APR 04 1978  
3300