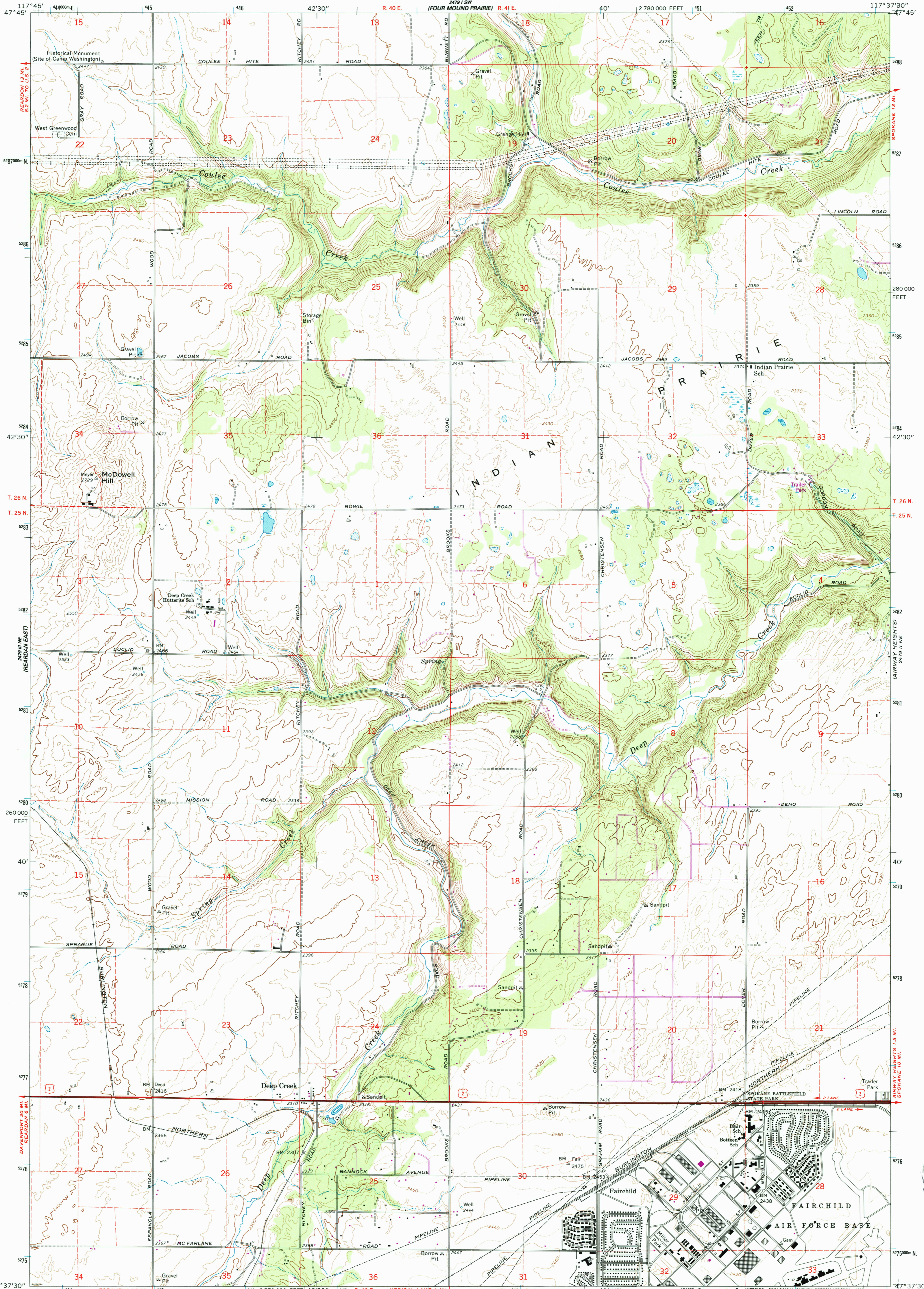


2479 I SE
(LONG LAKE)

UNITED STATES
DEPARTMENT OF THE INTERIOR
GEOLOGICAL SURVEY

DEEP CREEK QUADRANGLE
WASHINGTON-SPOKANE CO.
7.5 MINUTE SERIES (TOPOGRAPHIC)
NW/4 MEDICAL LAKE 15' QUADRANGLE

2479 I SE
(NINE MILE FALLS)



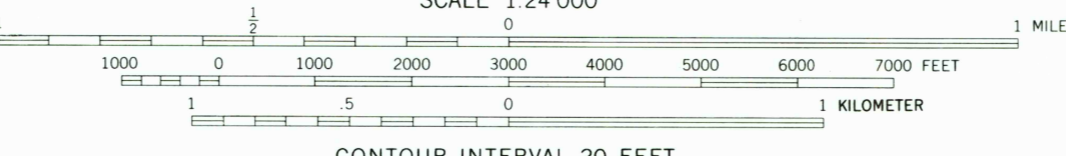
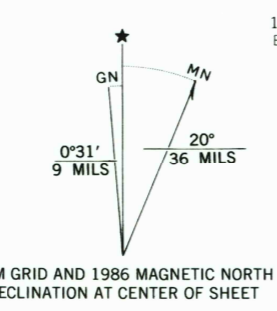
2479 I SE
(NINE MILE FALLS)

Mapped, edited, and published by the Geological Survey

Control by USGS and NOS/NOAA
Topography by photogrammetric methods from aerial photographs taken 1952 and planetable surveys 1954.
Revised from aerial photographs taken 1972. Field checked 1973

Projection and 10,000-foot grid ticks: Washington coordinate system, north zone (Lambert conformal conic)
1000-meter Universal Transverse Mercator grid ticks, zone 11, shown in blue. 1927 North American datum
Fine red dashed lines indicate selected fence and field lines

To place on the predicted North American Datum 1983, move the projection lines 16 meters north and 80 meters east as shown by dashed corner ticks
There may be private inholdings within the boundaries of the National or State reservations shown on this map



CONTOUR INTERVAL 20 FEET
DOTTED LINES REPRESENT 10-FOOT CONTOURS
NATIONAL GEODETIC VERTICAL DATUM OF 1929

THIS MAP COMPLIES WITH NATIONAL MAP ACCURACY STANDARDS
FOR SALE BY U.S. GEOLOGICAL SURVEY, DENVER, COLORADO 80225, OR RESTON, VIRGINIA 22092
A FOLDER DESCRIBING TOPOGRAPHIC MAPS AND SYMBOLS IS AVAILABLE ON REQUEST



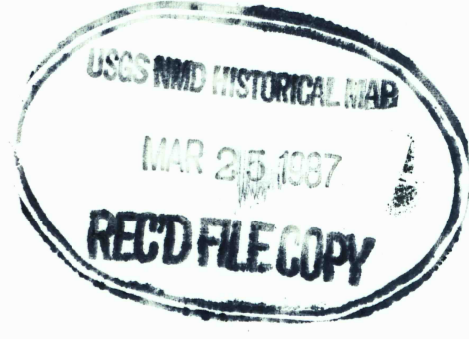
ROAD CLASSIFICATION

| | |
|---------------------------------|---|
| Primary highway, hard surface | Light-duty road, hard or improved surface |
| Secondary highway, hard surface | Unimproved road |
| Interstate Route | U. S. Route |
| | State Route |

DEEP CREEK, WASH.
NW/4 MEDICAL LAKE 15' QUADRANGLE
47117-F6-TF-024

1973
PHOTOREVISED 1986
DMA 2479 II NW-SERIES V891

Revisions shown in purple compiled from aerial photographs taken 1982 and other sources
This information not field checked. Map edited 1986



2479 I SE
(NINE MILE FALLS)