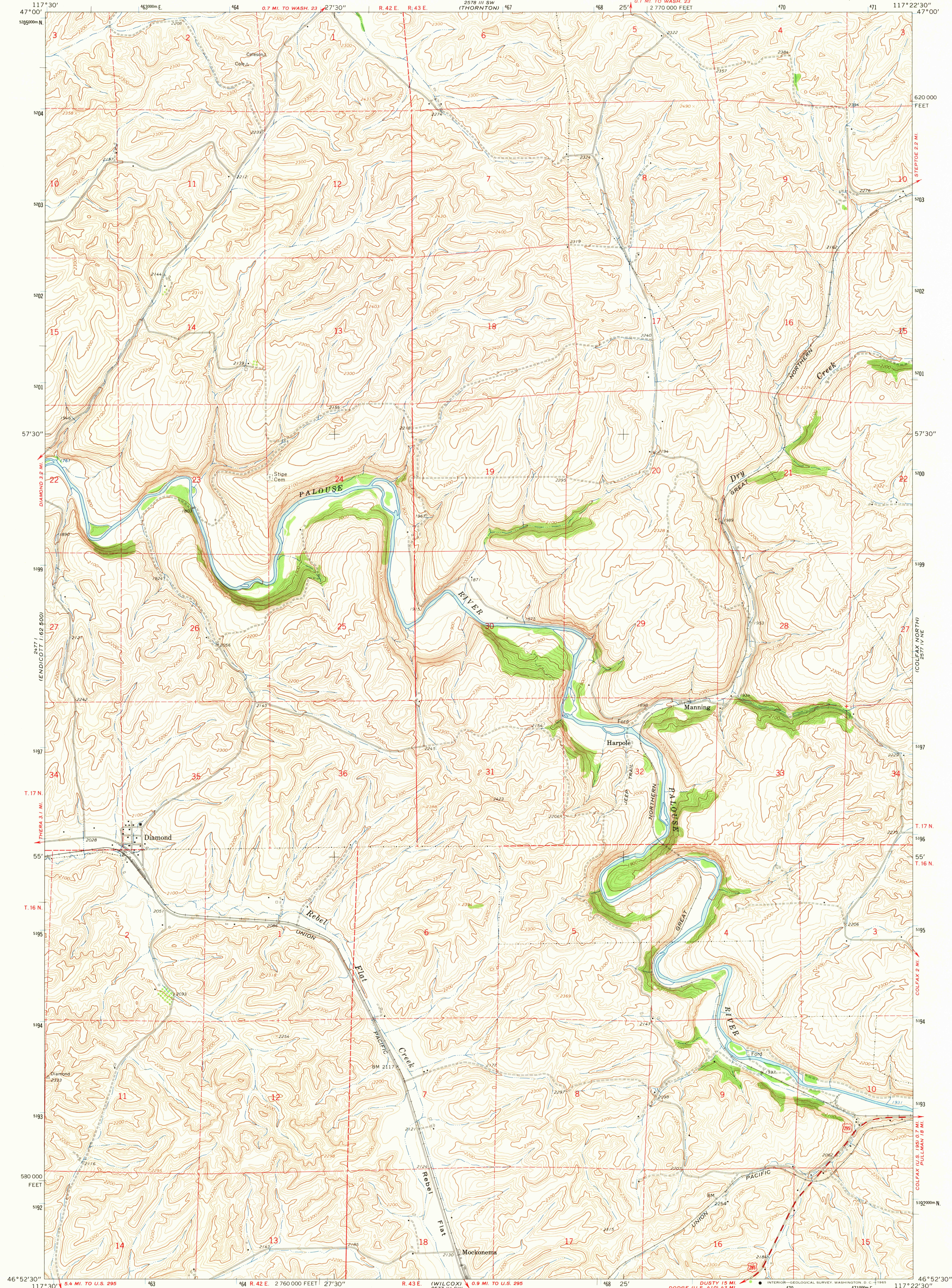


2578 19.56
(57° 10' N)

UNITED STATES
DEPARTMENT OF THE INTERIOR
GEOLOGICAL SURVEY

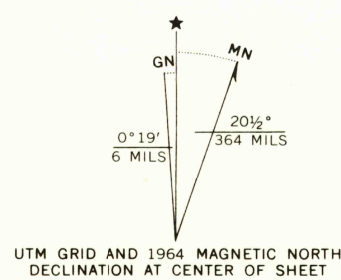
DIAMOND QUADRANGLE
WASHINGTON—WHITMAN CO.
7.5 MINUTE SERIES (TOPOGRAPHIC)

2578 19.56
(57° 10' N)



2577 16.22
(56° 52' 30" N)

Mapped, edited, and published by the Geological Survey
Control by USGS and USC&GS
Topography by photogrammetric methods from aerial
photographs taken 1961. Field checked 1964
Polyconic projection. 1927 North American datum
10,000-foot grid based on Washington coordinate system,
south zone
1000-meter Universal Transverse Mercator grid ticks,
zone 11, shown in blue



SCALE 1:24,000
CONTOUR INTERVAL 20 FEET
DOTTED LINES REPRESENT 10-FOOT CONTOURS
DATUM IS MEAN SEA LEVEL
THIS MAP COMPLIES WITH NATIONAL MAP ACCURACY STANDARDS
FOR SALE BY U. S. GEOLOGICAL SURVEY, DENVER 25, COLORADO OR WASHINGTON 25, D. C.
A FOLDER DESCRIBING TOPOGRAPHIC MAPS AND SYMBOLS IS AVAILABLE ON REQUEST



ROAD CLASSIFICATION
Medium-duty ——— Light-duty ———
Unimproved dirt ———
U.S. Route

DIAMOND, WASH.
N4652.5—W11722.5/7.5

1964
AMS 2577 IV NW—SERIES V891

JUL 27 1965

U.S.G.S.
FILE 60
TOPOGRAPHIC DIVISION