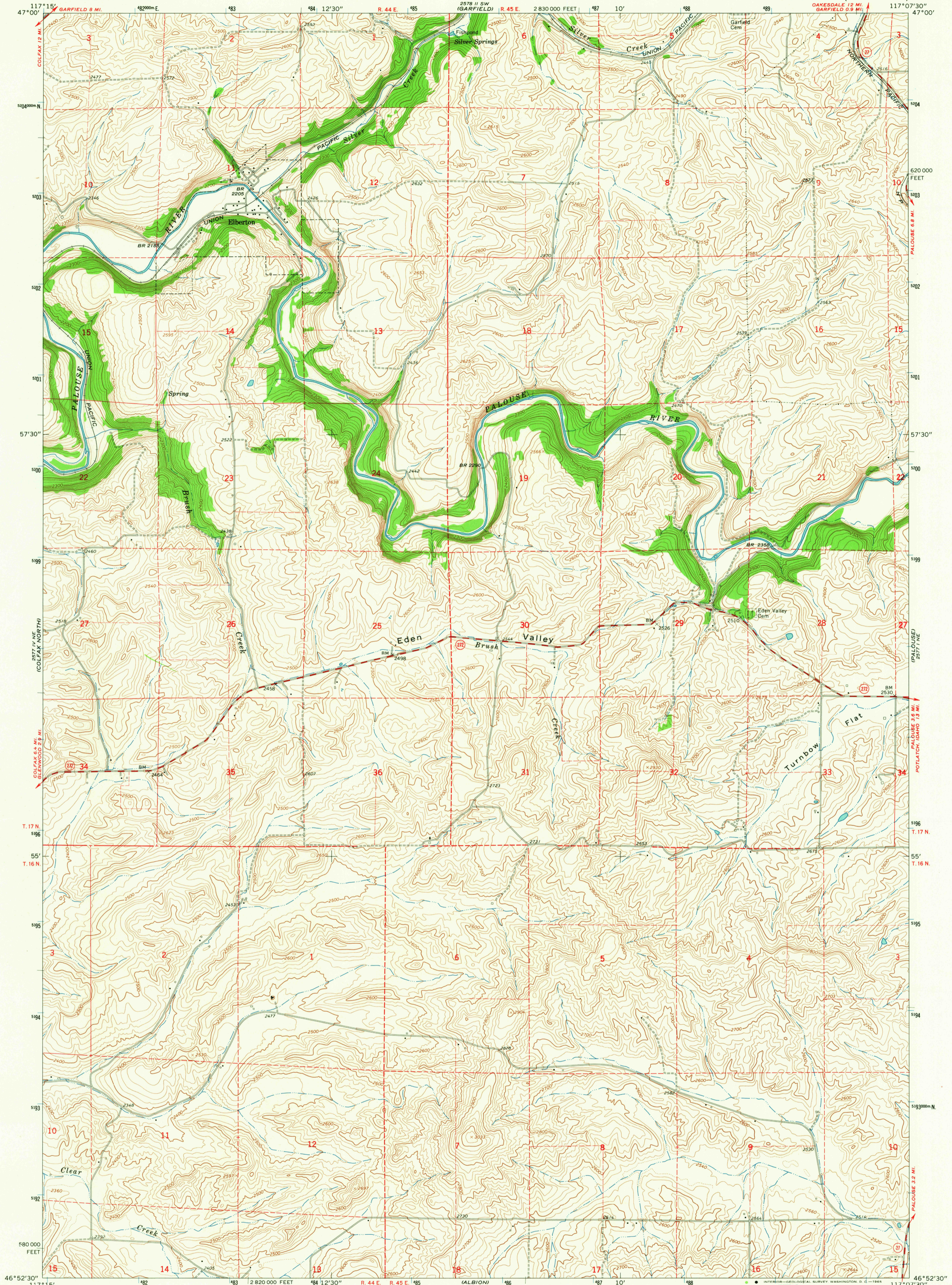


UNITED STATES
DEPARTMENT OF THE INTERIOR
GEOLOGICAL SURVEY

ELBERTON QUADRANGLE
WASHINGTON-WHITMAN CO.
7.5 MINUTE SERIES (TOPOGRAPHIC)



Mapped, edited, and published by the Geological Survey

Control by USGS and USC&GS

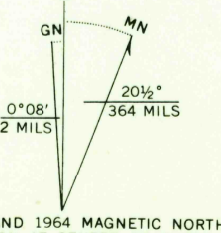
Topography by photogrammetric methods from aerial photographs taken 1961. Field checked 1964

Polyconic projection. 1927 North American datum

10,000-foot grid based on Washington coordinate system, south zone

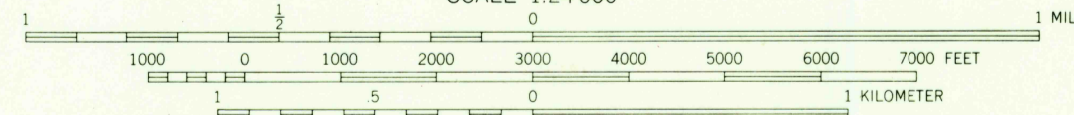
1000-meter Universal Transverse Mercator grid ticks, zone 11, shown in blue

Fine red dashed lines indicate selected fence lines

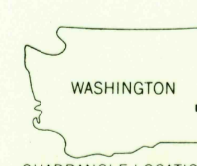


UTM GRID AND 1984 MAGNETIC NORTH DECLINATION AT CENTER OF SHEET

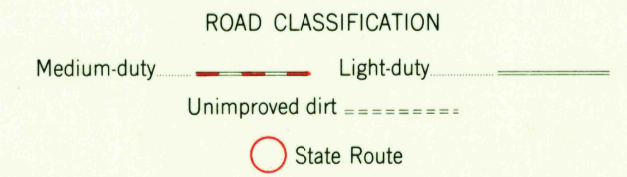
SCALE 1:24,000



CONTOUR INTERVAL 20 FEET
DOTTED LINES REPRESENT 10-FOOT CONTOURS
DATUM IS MEAN SEA LEVEL



WASHINGTON
QUADRANGLE LOCATION



THIS MAP COMPLIES WITH NATIONAL MAP ACCURACY STANDARDS
FOR SALE BY U. S. GEOLOGICAL SURVEY, DENVER 25, COLORADO OR WASHINGTON 25, D. C.
A FOLDER DESCRIBING TOPOGRAPHIC MAPS AND SYMBOLS IS AVAILABLE ON REQUEST

USGS
Historical File
Topographic Division

ELBERTON, WASH.
N4652.5-W11707.5/7.5

1964

AMS 2577 I NW-SERIES V891

2585
JUN 10 1965
U.S.G.S.
FILE COPY
TOPOGRAPHIC DIVISION