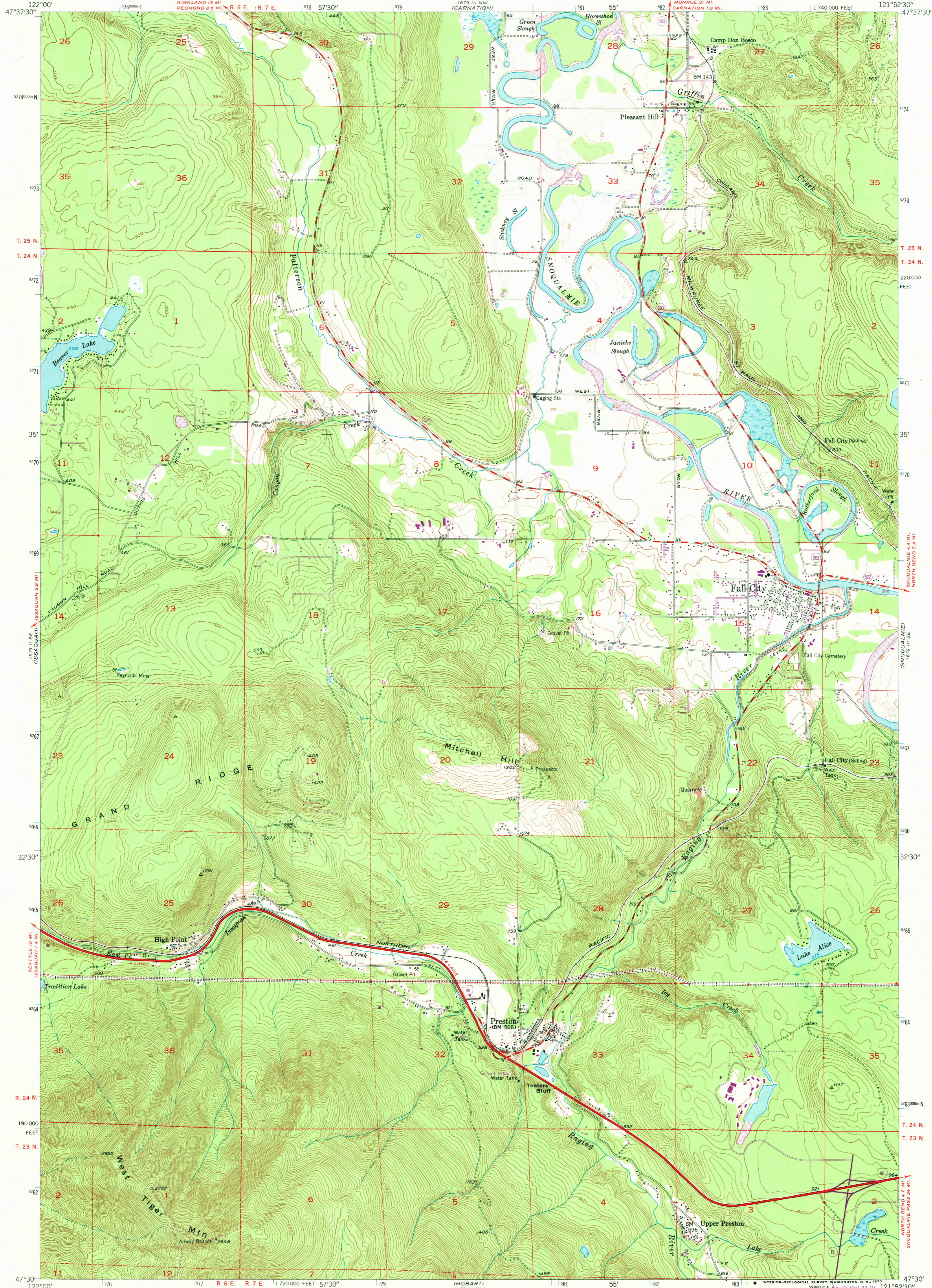


1579 1/4 NE (REDMOND)

UNITED STATES DEPARTMENT OF THE INTERIOR GEOLOGICAL SURVEY

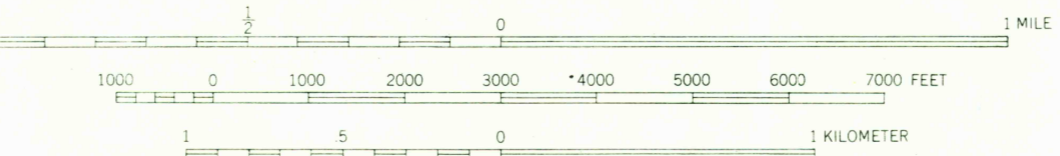
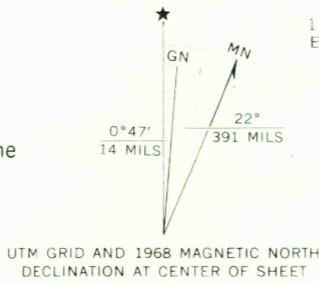
FALL CITY QUADRANGLE WASHINGTON—KING CO. 7.5 MINUTE SERIES (TOPOGRAPHIC)

1679 1/4 NE (LAKE JOY)



1579 1/4 SE (ISSACQUAH)

Mapped, edited, and published by the Geological Survey... Control by USGS and USC&GS... Topography from aerial photographs by multiplex methods and by plane-table surveys 1953. Aerial photographs taken 1952... Polyconic projection. 1927 North American datum 10,000-foot grid based on Washington coordinate system, north zone... Dashed land lines indicate approximate locations... Unchecked elevations are shown in brown... 1000-meter Universal Transverse Mercator grid ticks, zone 10, shown in blue... Revisions shown in purple compiled from aerial photographs taken 1968. This information not field checked.



SCALE 1:24,000... CONTOUR INTERVAL 20 FEET... DOTTED LINES REPRESENT HALF-INTERVAL CONTOURS... CONTOUR INTERVAL ON SNOQUALMIE RIVER SURFACE 5 FEET... DATUM IS MEAN SEA LEVEL

ROAD CLASSIFICATION table with symbols for Heavy-duty, Medium-duty, Light-duty, and Unimproved dirt roads, as well as Interstate and State Routes.



FALL CITY, WASH. N4730—W12152.5/7.5

FOR SALE BY U.S. GEOLOGICAL SURVEY, DENVER, COLORADO 80225, OR WASHINGTON, D. C. 20242 A FOLDER DESCRIBING TOPOGRAPHIC MAPS AND SYMBOLS IS AVAILABLE ON REQUEST

1953 PHOTOREVISED 1968 AMS 1679 III SW—SERIES V891

U.S.G.S. FILE COPY TOPOGRAPHIC DIVISION

3150 JAN 12 1970