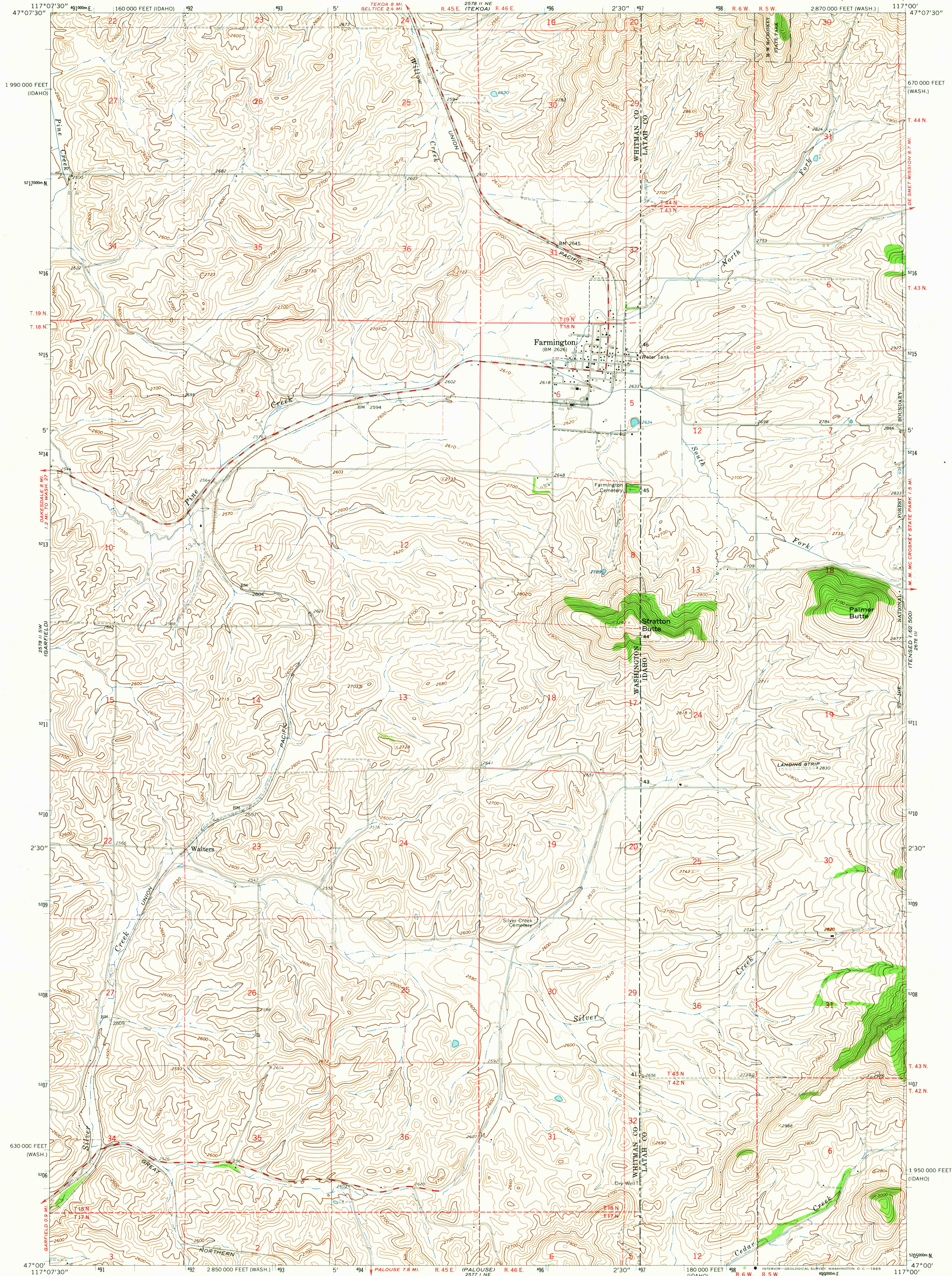


2578 II NW  
(OAKESDALE)

UNITED STATES  
DEPARTMENT OF THE INTERIOR  
GEOLOGICAL SURVEY

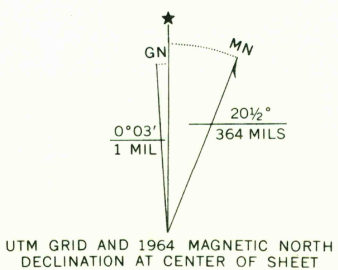
FARMINGTON QUADRANGLE  
WASHINGTON-IDAHO  
7.5 MINUTE SERIES (TOPOGRAPHIC)

2578 II SE  
(TENNESSEE)



2577 II NW  
(ELBERTON)

Mapped, edited, and published by the Geological Survey  
Control by USGS and USC&GS  
Topography by photogrammetric methods from aerial  
photographs taken 1961. Field checked 1964  
Polyconic projection. 1927 North American datum  
10,000-foot grids based on Washington coordinate system,  
south zone, and Idaho coordinate system, west zone  
1000-meter Universal Transverse Mercator grid ticks,  
zone 11, shown in blue  
Fine red dashed lines indicate selected fence lines



SCALE 1:24,000  
CONTOUR INTERVAL 20 FEET  
DOTTED LINES REPRESENT 10-FOOT CONTOURS  
DATUM IS MEAN SEA LEVEL  
THIS MAP COMPLIES WITH NATIONAL MAP ACCURACY STANDARDS  
FOR SALE BY U. S. GEOLOGICAL SURVEY, DENVER 25, COLORADO OR WASHINGTON 25, D. C.  
A FOLDER DESCRIBING TOPOGRAPHIC MAPS AND SYMBOLS IS AVAILABLE ON REQUEST



ROAD CLASSIFICATION  
Medium-duty ——— Light-duty ———  
Unimproved dirt ———

FARMINGTON, WASH.-IDAHO  
N4700—W11700/7.5

USGS  
Historical File  
Topographic Division  
1964  
AMS 2578 II SE—SERIES V891

JUN 2 1965  
113175  
FREE COPY  
TOPOGRAPHIC DIVISION