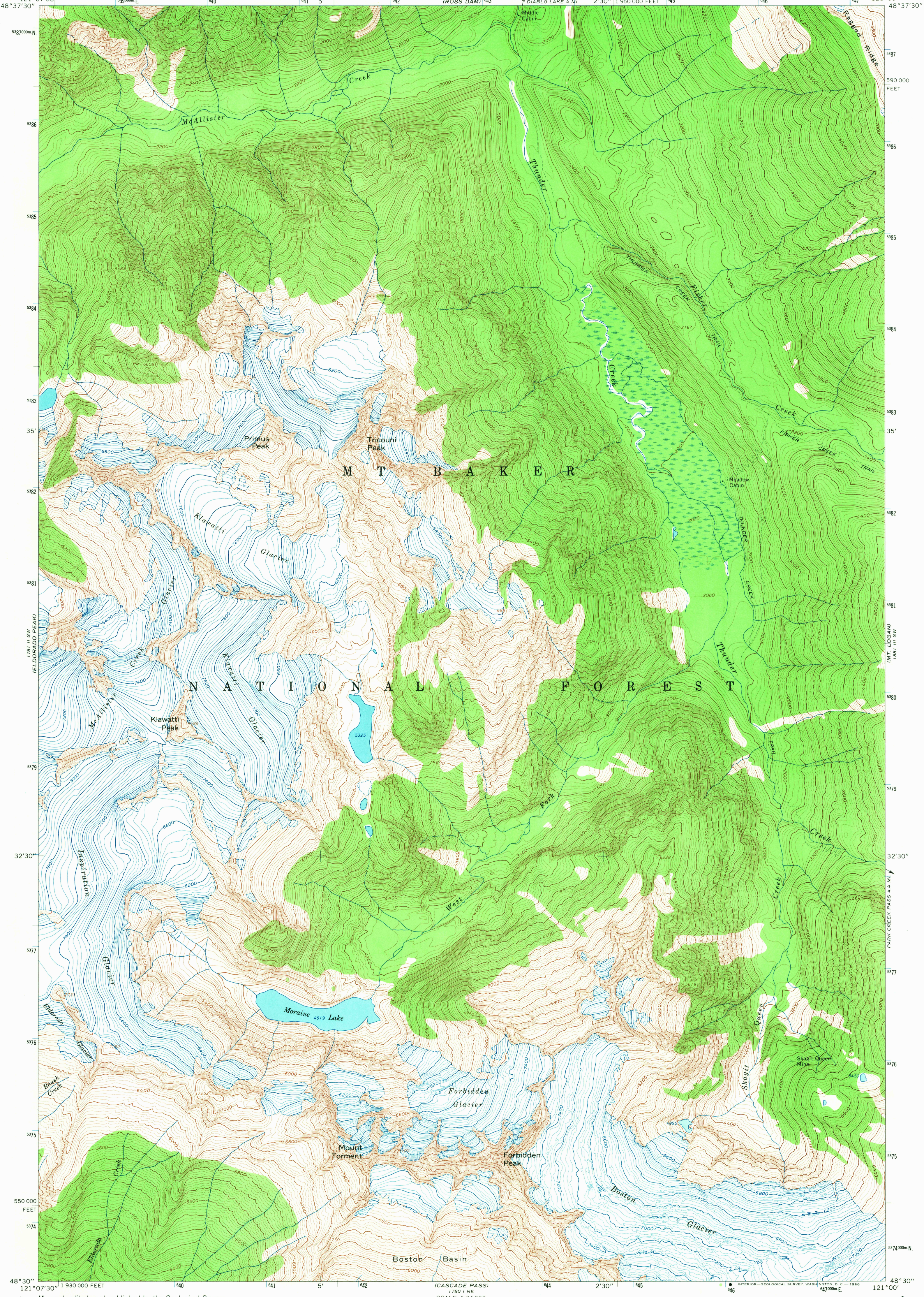


1781 II NW
(DIABLO DAM)
121°07'30"
48°37'30"

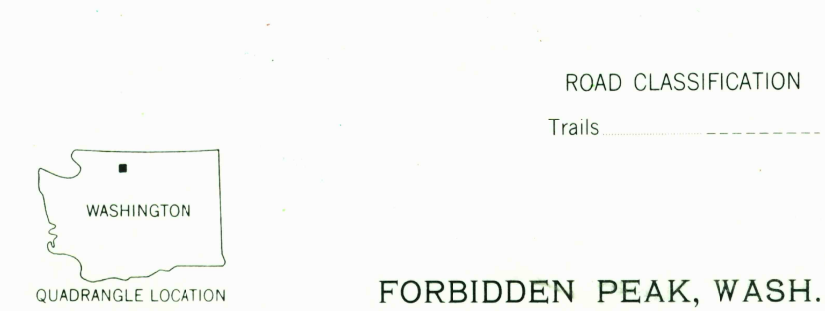
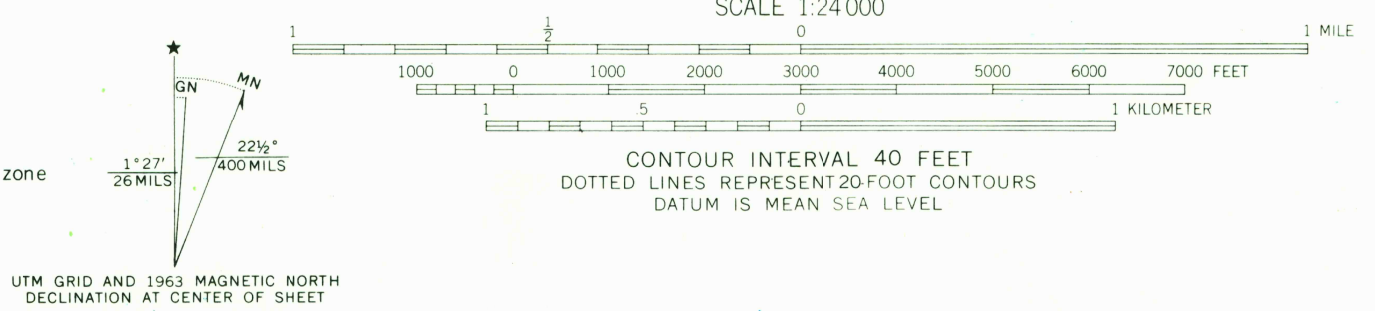
UNITED STATES
DEPARTMENT OF THE INTERIOR
GEOLOGICAL SURVEY

FORBIDDEN PEAK QUADRANGLE
WASHINGTON-SKAGIT CO.
7.5 MINUTE SERIES (TOPOGRAPHIC)

1781 II NE
(GRATER MOUNTAIN)
121°00'
48°37'30"



Maped, edited, and published by the Geological Survey
Control by USGS and USC&GS
Topography by photogrammetric methods from aerial
photographs taken 1958. Field checked 1963
Polyconic projection. 1927 North American datum
10,000-foot grid based on Washington coordinate system, north zone
1000-meter Universal Transverse Mercator grid ticks,
zone 10, shown in blue
Where omitted, land lines have not been established



ROAD CLASSIFICATION
Trails

FOR SALE BY U.S. GEOLOGICAL SURVEY, DENVER, COLORADO 80225 OR WASHINGTON, D. C. 20242
A FOLDER DESCRIBING TOPOGRAPHIC MAPS AND SYMBOLS IS AVAILABLE ON REQUEST

USGS
Historical File
Topographic Division
1963
AMS 1781 II SE-SERIES V891

FORBIDDEN PEAK, WASH.
N4830-W12100/7.5

3520
JUL 14 1968
U.S.G.S.
FIVE COPY
TOPOGRAPHIC DIVISION