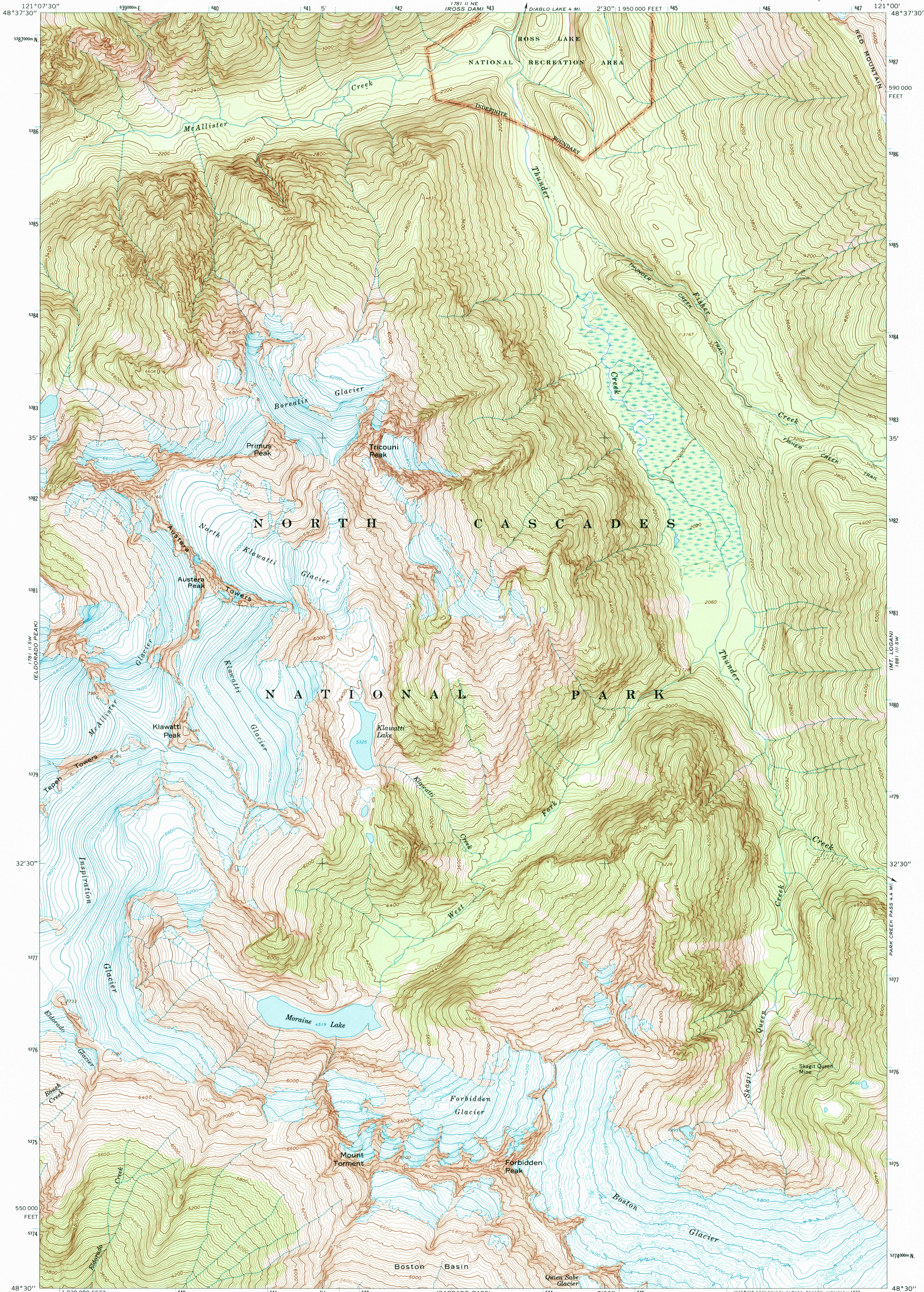


DIABLO DAM  
1781 II NW  
1980 III NW

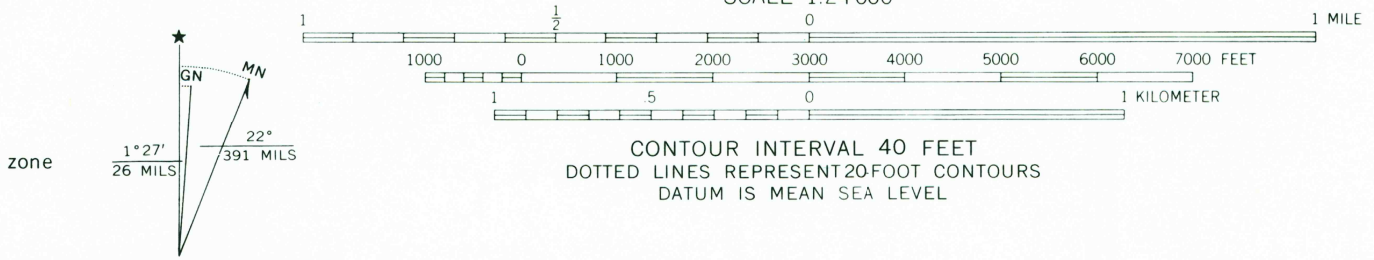
UNITED STATES  
DEPARTMENT OF THE INTERIOR  
GEOLOGICAL SURVEY

FORBIDDEN PEAK QUADRANGLE  
WASHINGTON-SKAGIT CO.  
7.5 MINUTE SERIES (TOPOGRAPHIC)

CRATER MOUNTAIN  
188 III NW  
1980 III NW



Mapped, edited, and published by the Geological Survey  
Control by USGS and USC&GS  
Topography by photogrammetric methods from aerial  
photographs taken 1958. Field checked 1963  
Polyconic projection. 1927 North American datum  
10,000-foot grid based on Washington coordinate system, north zone  
1000-meter Universal Transverse Mercator grid ticks,  
zone 10, shown in blue  
Land lines have not been established in this area



ROAD CLASSIFICATION  
Trails

USGS AND HISTORICAL  
MAP ARCHIVES  
JUN 3 1996  
REC'D FILE COPY

FOR SALE BY U.S. GEOLOGICAL SURVEY  
DENVER, COLORADO 80225, OR RESTON, VIRGINIA 22092  
A FOLDER DESCRIBING TOPOGRAPHIC MAPS AND SYMBOLS IS AVAILABLE ON REQUEST

FORBIDDEN PEAK, WASH.  
N4830-W12100/7.5

1963  
MINOR CORRECTIONS MADE 1973  
AMS 1781 II SE-SERIES V891

