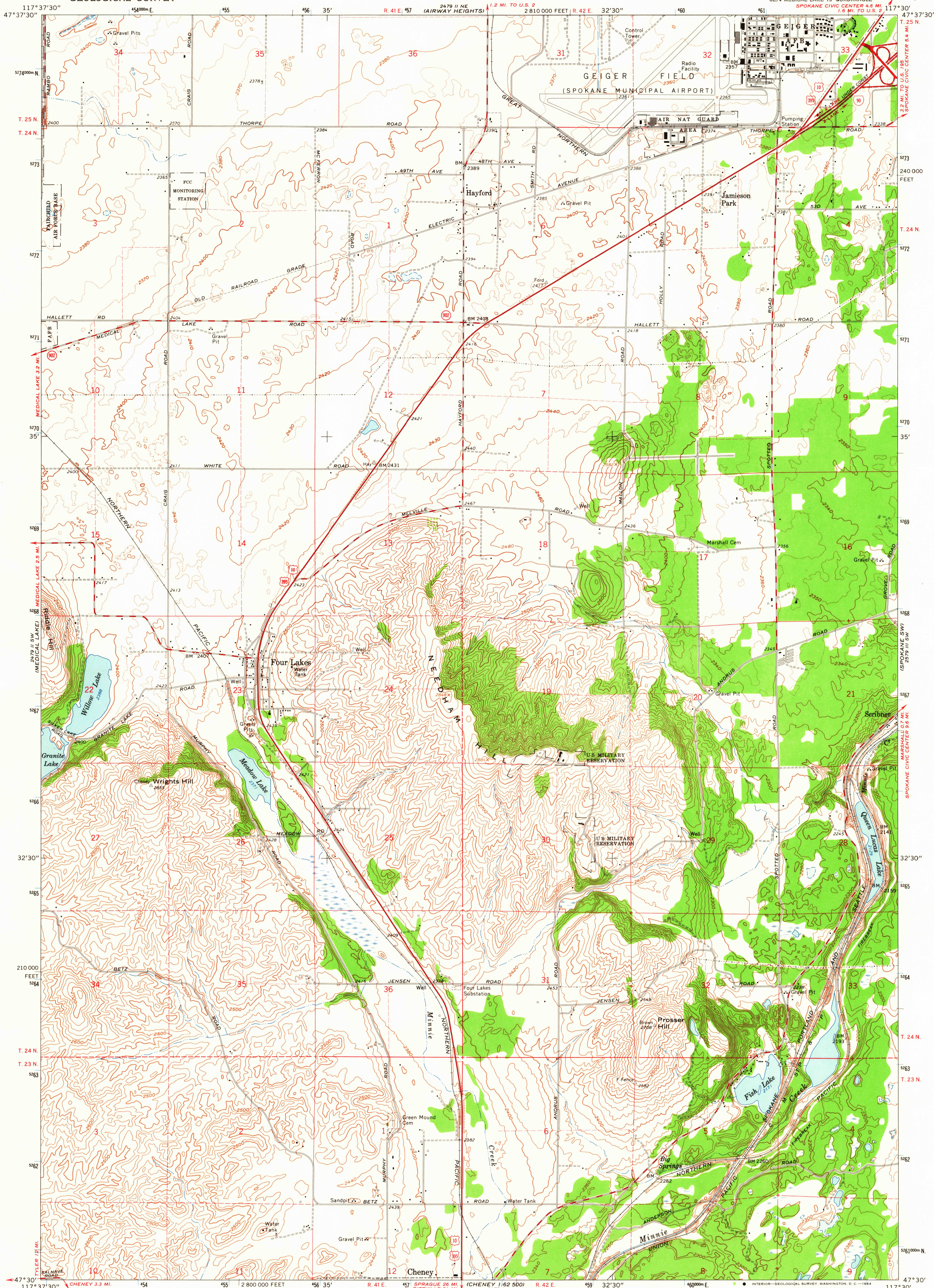
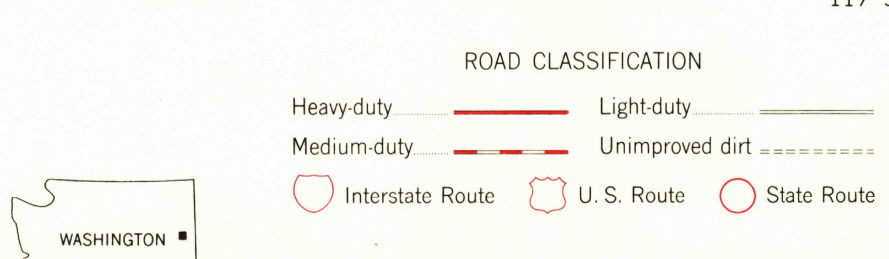
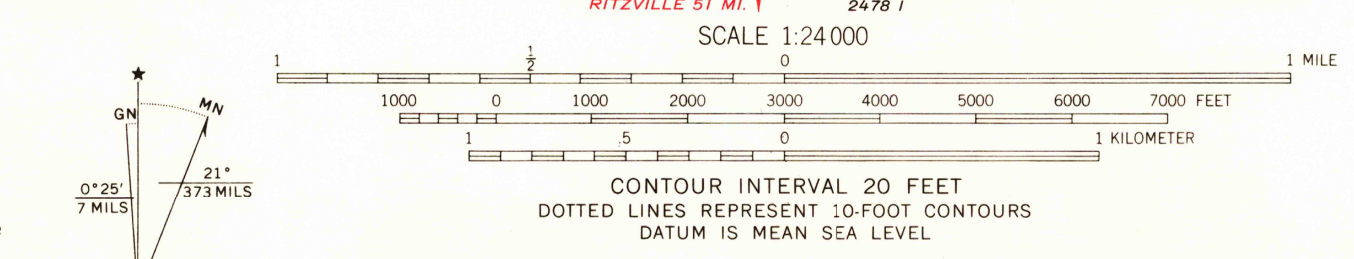


UNITED STATES  
DEPARTMENT OF THE INTERIOR  
GEOLOGICAL SURVEY

FOUR LAKES QUADRANGLE  
WASHINGTON—SPOKANE CO.  
7.5 MINUTE SERIES (TOPOGRAPHIC)



Mapped, edited, and published by the Geological Survey  
Control by USGS and USC&GS  
Topography by photogrammetric methods from aerial photographs taken 1952. Field checked 1954. Revised from aerial photographs taken 1962. Field checked 1963  
Polyconic projection. 1927 North American datum  
10,000-foot grid based on Washington coordinate system, north zone  
1000-meter Universal Transverse Mercator grid ticks, zone 11, shown in blue  
Fine red dashed lines indicate selected fence lines



FOUR LAKES, WASH.  
SE 1/4 MEDICAL LAKE 15' QUADRANGLE  
N4730—W11730/7.5

OCT 14 1964  
U.S.G.S.  
FILE COPY  
TOPOGRAPHIC DIVISION  
3135

THIS MAP COMPLIES WITH NATIONAL MAP ACCURACY STANDARDS  
FOR SALE BY U. S. GEOLOGICAL SURVEY, DENVER 25, COLORADO OR WASHINGTON 25, D. C.  
A FOLDER DESCRIBING TOPOGRAPHIC MAPS AND SYMBOLS IS AVAILABLE ON REQUEST

USGS  
Historical Topographic Division  
1963  
AMS 2479 II SE—SERIES V891