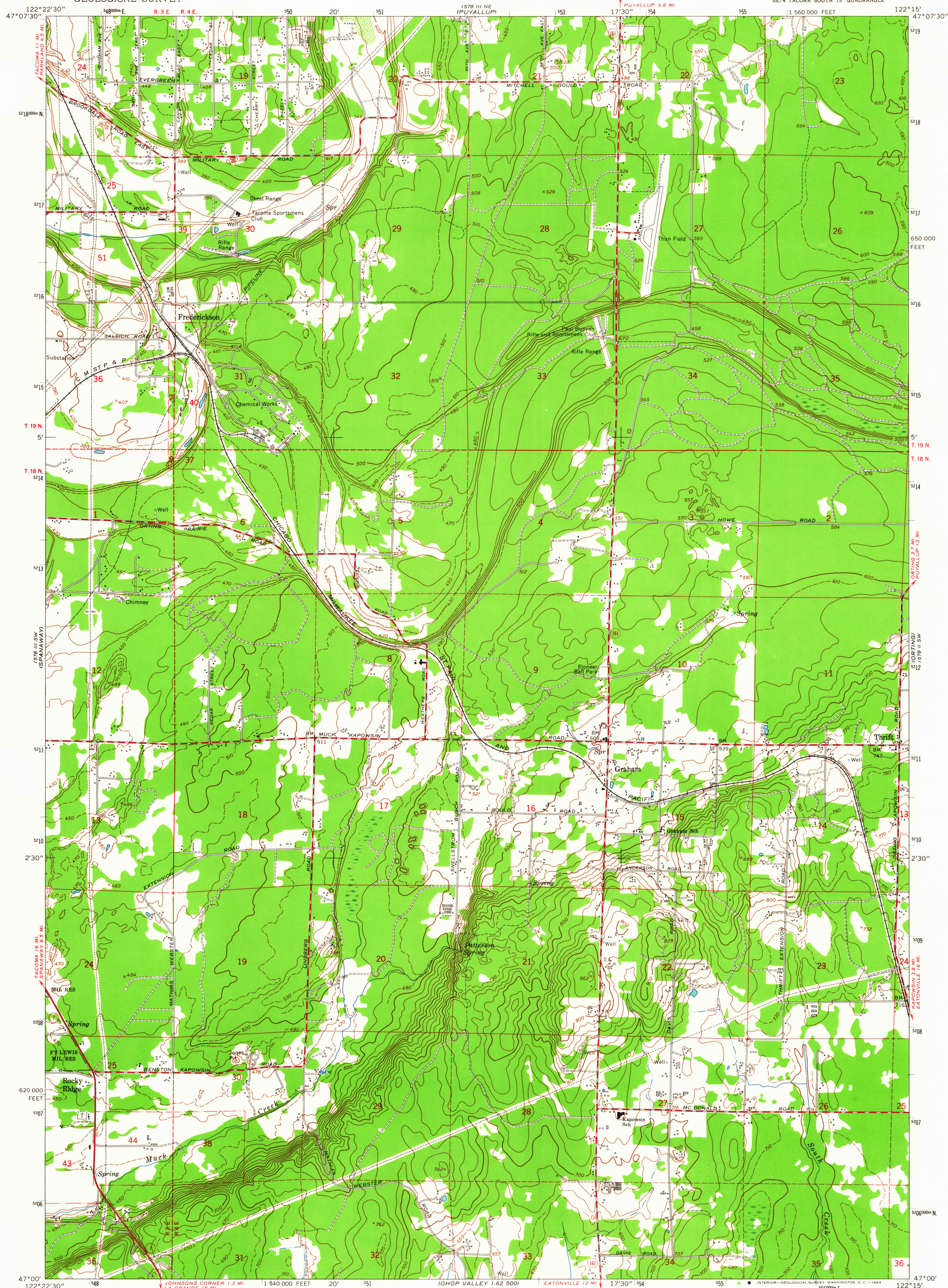
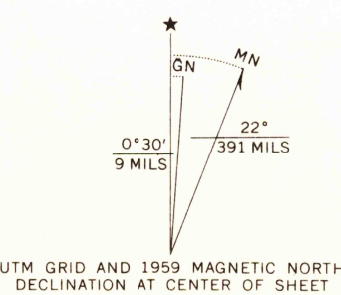


UNITED STATES
DEPARTMENT OF THE INTERIOR
GEOLOGICAL SURVEY

FREDERICKSON QUADRANGLE
WASHINGTON—PIERCE CO.
7.5 MINUTE SERIES (TOPOGRAPHIC)
SE/4 TACOMA SOUTH 15' QUADRANGLE



Mapped by the Army Map Service
Published for civil use by the Geological Survey
Control by USGS, USC&GS, and USCE
Topography by photogrammetric methods from aerial
photographs taken 1957, field annotated 1959
Polyconic projection. 1927 North American datum
10,000-foot grid based on Washington coordinate system,
south zone
1000-meter Universal Transverse Mercator grid ticks,
zone 10, shown in blue



SCALE 1:24,000
1 1000 0 1000 2000 3000 4000 5000 6000 7000 FEET
1 5 10 KILOMETER
CONTOUR INTERVAL 20 FEET
DASHED LINES REPRESENT 10-FOOT CONTOURS
DATUM IS MEAN SEA LEVEL
THIS MAP COMPLIES WITH NATIONAL MAP ACCURACY STANDARDS
FOR SALE BY U. S. GEOLOGICAL SURVEY, DENVER 25, COLORADO OR WASHINGTON 25, D. C.
A FOLDER DESCRIBING TOPOGRAPHIC MAPS AND SYMBOLS IS AVAILABLE ON REQUEST



ROAD CLASSIFICATION
Heavy duty ——— Light duty ———
Medium-duty ——— Unimproved dirt ———
State Route ———

FREDERICKSON, WASH.
SE/4 TACOMA SOUTH 15' QUADRANGLE
N4700—W1215/7.5

1959

AMS 1578 III SE—SERIES V891

U.S.G.S.
FILE COPY
TOPOGRAPHIC DIVISION

001 21964

2600