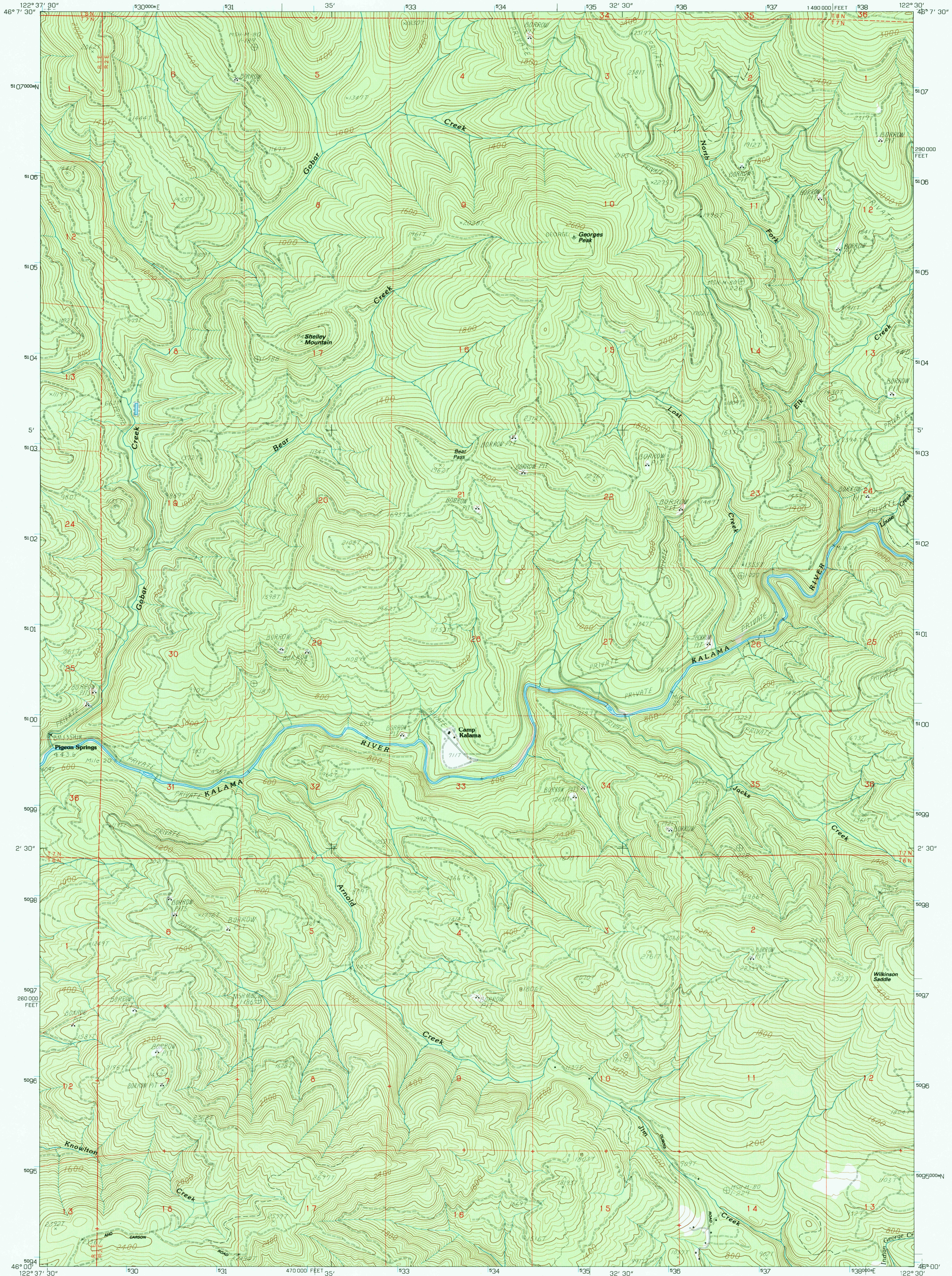


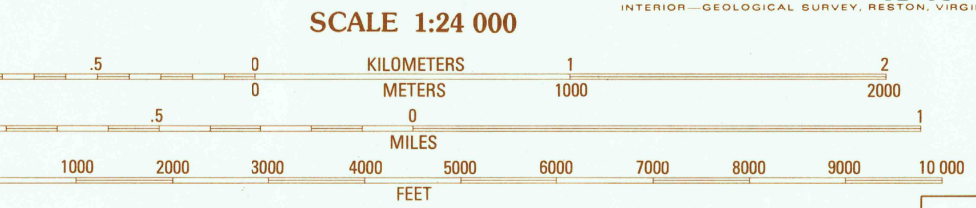
UNITED STATES
DEPARTMENT OF THE INTERIOR
GEOLOGICAL SURVEY

GEORGES PEAK QUADRANGLE
WASHINGTON—COWLITZ CO.
7.5 MINUTE SERIES (TOPOGRAPHIC)



PRODUCED BY THE UNITED STATES GEOLOGICAL SURVEY
CONTROL BY USGS, NOS/NOA
COMPILED FROM AERIAL PHOTOGRAPHS TAKEN 1980
FIELD CHECKED 1981, MAP EDITED 1985
PROJECTION LAMBERT CONFORMAL CONIC
BLUE 1000-METER UNIVERSAL TRANSVERSE MERCATOR TICS, ZONE 10
10 000-FOOT STATE GRID TICS WASHINGTON, SOUTH ZONE
UTM GRID DECLINATION 0°19' EAST
1983 MAGNETIC NORTH DECLINATION 19° EAST
VERTICAL DATUM NATIONAL GEODETIC VERTICAL DATUM OF 1929
HORIZONTAL DATUM NORTH AMERICAN DATUM OF 1927 (NAD 27)
North American Datum of 1983 (NAD 83) is shown by
dashed corner ticks. The values of the shift between NAD
27 and NAD 83 for 7.5-minute intersections are obtainable
from National Geodetic Survey NADCON software.
There may be private inholdings within the boundaries of
any Federal and State reservations shown on this map.
Photinspected from 1990 source; no major culture or
drainage changes observed. Names verified 1993.

PROVISIONAL MAP
Produced from original
manuscript drawings. Infor-
mation shown as of date of
field check.



SCALE 1:24 000
CONTOUR INTERVAL 40 FEET
CONTROL ELEVATIONS SHOWN TO THE NEAREST 0.1 FOOT
OTHER ELEVATIONS SHOWN TO THE NEAREST FOOT
To convert meters to feet multiply by 3.2808
To convert feet to meters multiply by 0.3048

1	2	3	1 Hemlock Pass
4	5	2 Wolf Point	2 Elk Mountain
6	7	3 Woodford Creek	3 Lakeview Peak
8	8	4 Woodland	4 Arid
		5 Amboy	

ROAD LEGEND
Improved Road
Unimproved Road
Trail
Interstate Route U.S. Route State Route

GEORGES PEAK, WASH.
PROVISIONAL EDITION 1985

46122-A5-TF-024
MINOR REVISION 1993

