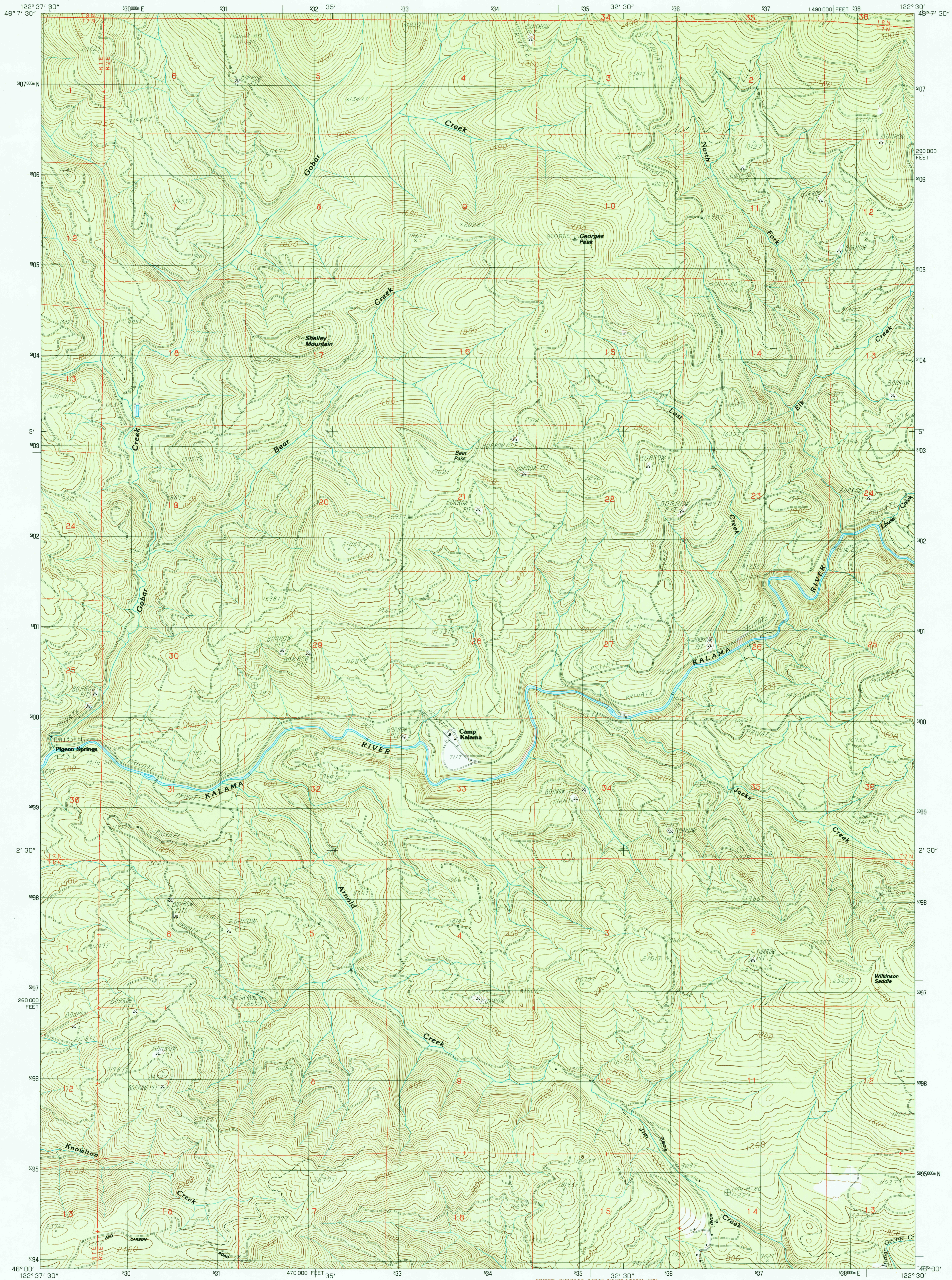


UNITED STATES
DEPARTMENT OF THE INTERIOR
GEOLOGICAL SURVEY

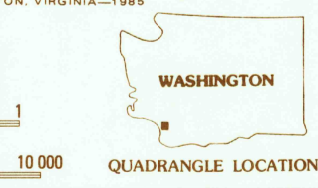
GEORGES PEAK QUADRANGLE
WASHINGTON—COWLITZ CO.
7.5 MINUTE SERIES (TOPOGRAPHIC)



PRODUCED BY THE UNITED STATES GEOLOGICAL SURVEY
CONTROL BY USGS, NOS/NOAA
COMPILED FROM AERIAL PHOTOGRAPHS TAKEN 1980
FIELD CHECKED 1981. MAP EDITED 1985
PROJECTION LAMBERT CONFORMAL CONIC
GRID: 1000-METER UNIVERSAL TRANSVERSE MERCATOR, ZONE 10
10,000-FOOT STATE GRID TICS WASHINGTON SOUTH ZONE
UTM GRID DECLINATION 019° EAST
1980 MAGNETIC NORTH DECLINATION 20° EAST
VERTICAL DATUM NATIONAL GEODETIC VERTICAL DATUM OF 1929
HORIZONTAL DATUM 1927 NORTH AMERICAN DATUM
To place on the predicted North American Datum of 1983,
move the projection lines as shown by dashed corner ticks
(23 meters north / 94 meters east)
There may be private inholdings within the boundaries of any
Federal and State Reservations shown on this map

PROVISIONAL MAP
Produced from original
manuscript drawings. Infor-
mation shown as of date of
field check.

SCALE 1:24 000
1 0 1 0 2
KILOMETERS
1 0 1 0 2
METERS
1 0 1 0 2
MILES
1 0 1 0 2
FEET
CONTOUR INTERVAL 40 FEET
CONTROL ELEVATIONS SHOWN TO THE NEAREST 0.1 FOOT
OTHER ELEVATIONS SHOWN TO THE NEAREST FOOT
To convert meters to feet multiply by 3.2808
To convert feet to meters multiply by 0.3048



1	2	3	Hemlock Pass
4	5	6	Wolf Point
7	8	9	Elk Mountain
10	11	12	Woodford Creek
13	14	15	Lakewood Peak
16	17	18	Woodland
19	20	21	Archie
22	23	24	Amboy

ROAD LEGEND
Improved Road
Unimproved Road
Trail
Interstate Route U.S. Route State Route
GEORGES PEAK, WASH.
PROVISIONAL EDITION 1985