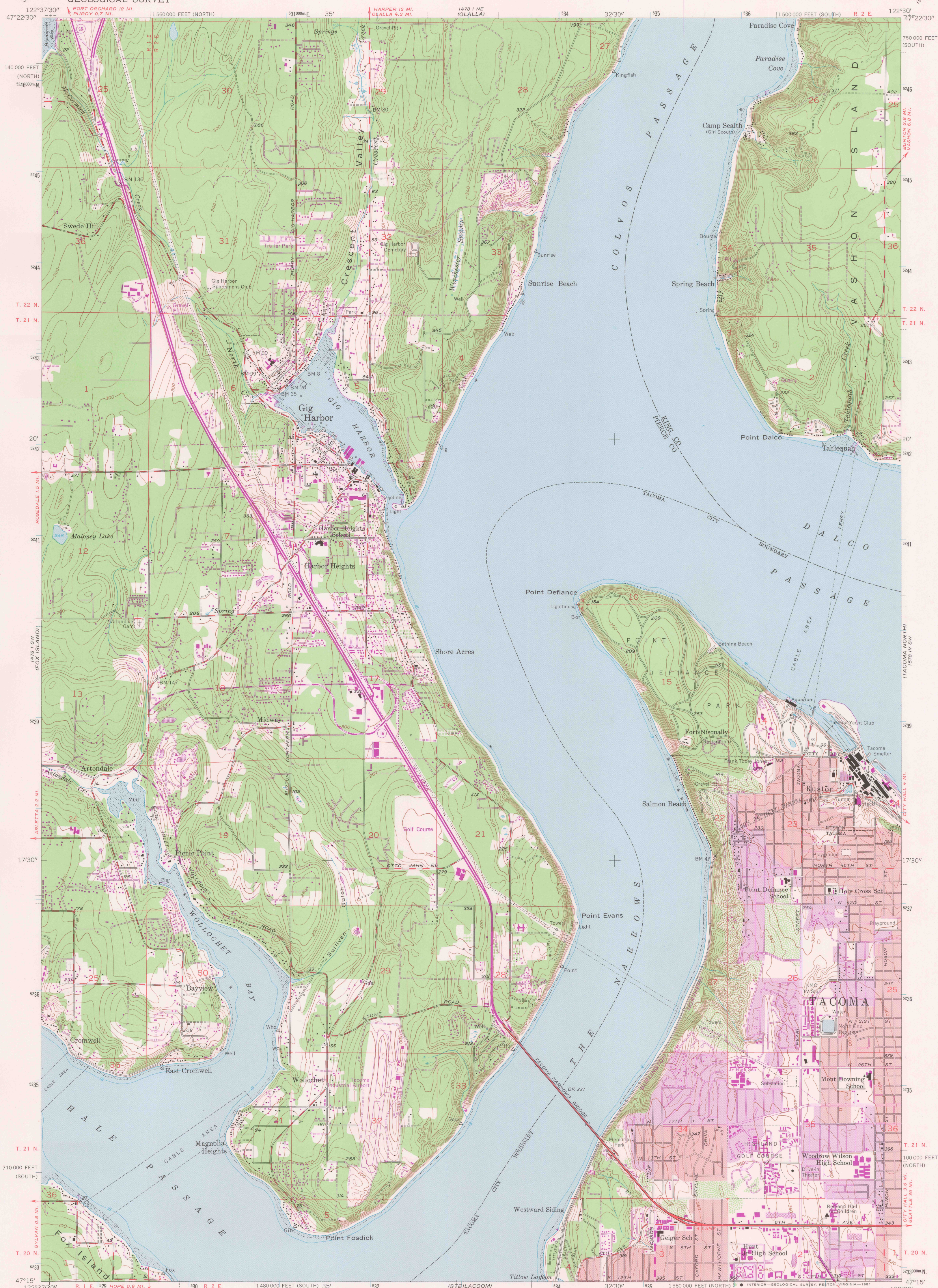


UNITED STATES
DEPARTMENT OF THE INTERIOR
GEOLOGICAL SURVEY

GIG HARBOR QUADRANGLE
WASHINGTON
7.5 MINUTE SERIES (TOPOGRAPHIC)



Maped, edited, and published by the Geological Survey

Topography by photogrammetric methods from aerial photographs taken 1951. Culture revised in 1959.

Selected hydrographic data compiled from NOS chart 6460 (1958). This information is not intended for navigational purposes.

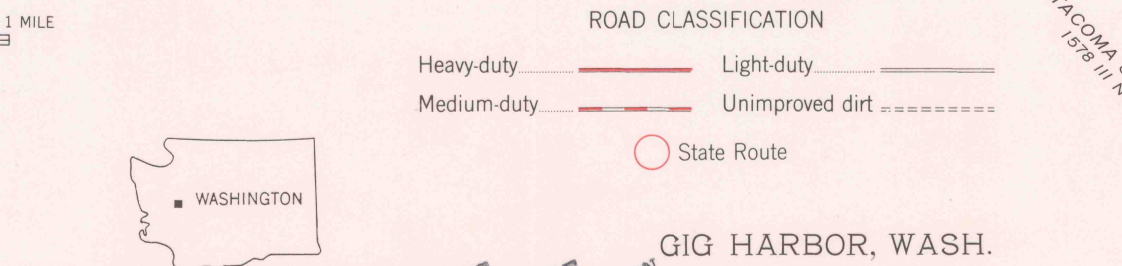
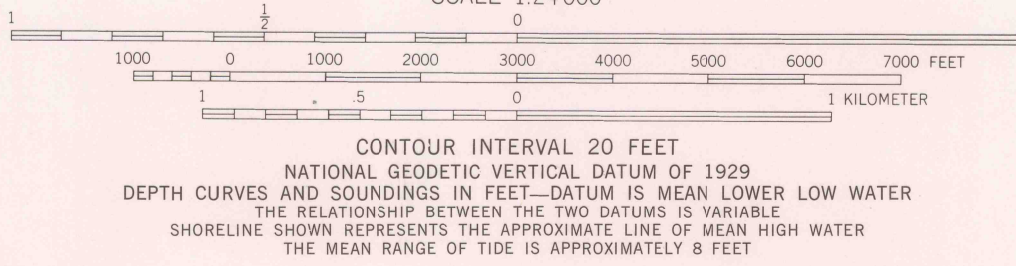
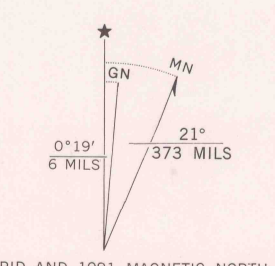
Polyconic projection. 10,000-foot grid ticks based on Washington coordinate system, south and north zones. 1000-meter Universal Transverse Mercator grid ticks, zone 10, shown in blue.

1927 North American Datum. To place on the predicted North American Datum 1983, move the projection lines 23 meters north and 94 meters east as shown by dashed corner ticks.

Red tint indicates areas in which only landmark buildings are shown.

Revisions shown in purple and woodland compiled from aerial photographs taken 1978 and other sources. This information not field checked. Map edited 1981.

Purple tint indicates extension of urban areas.



FOR SALE BY U. S. GEOLOGICAL SURVEY, DENVER, COLORADO 80225, OR RESTON, VIRGINIA 22092
A FOLDER DESCRIBING TOPOGRAPHIC MAPS AND SYMBOLS IS AVAILABLE ON REQUEST

USGS
HISTORICAL FILE
NATIONAL MAPPING DIVISION

GIG HARBOR, WASH.

N 4715—W 12230/7.5

1959
PHOTOREVISED 1981
DMA 1478 I SE—SERIES V891

SEP 3 1981
2400