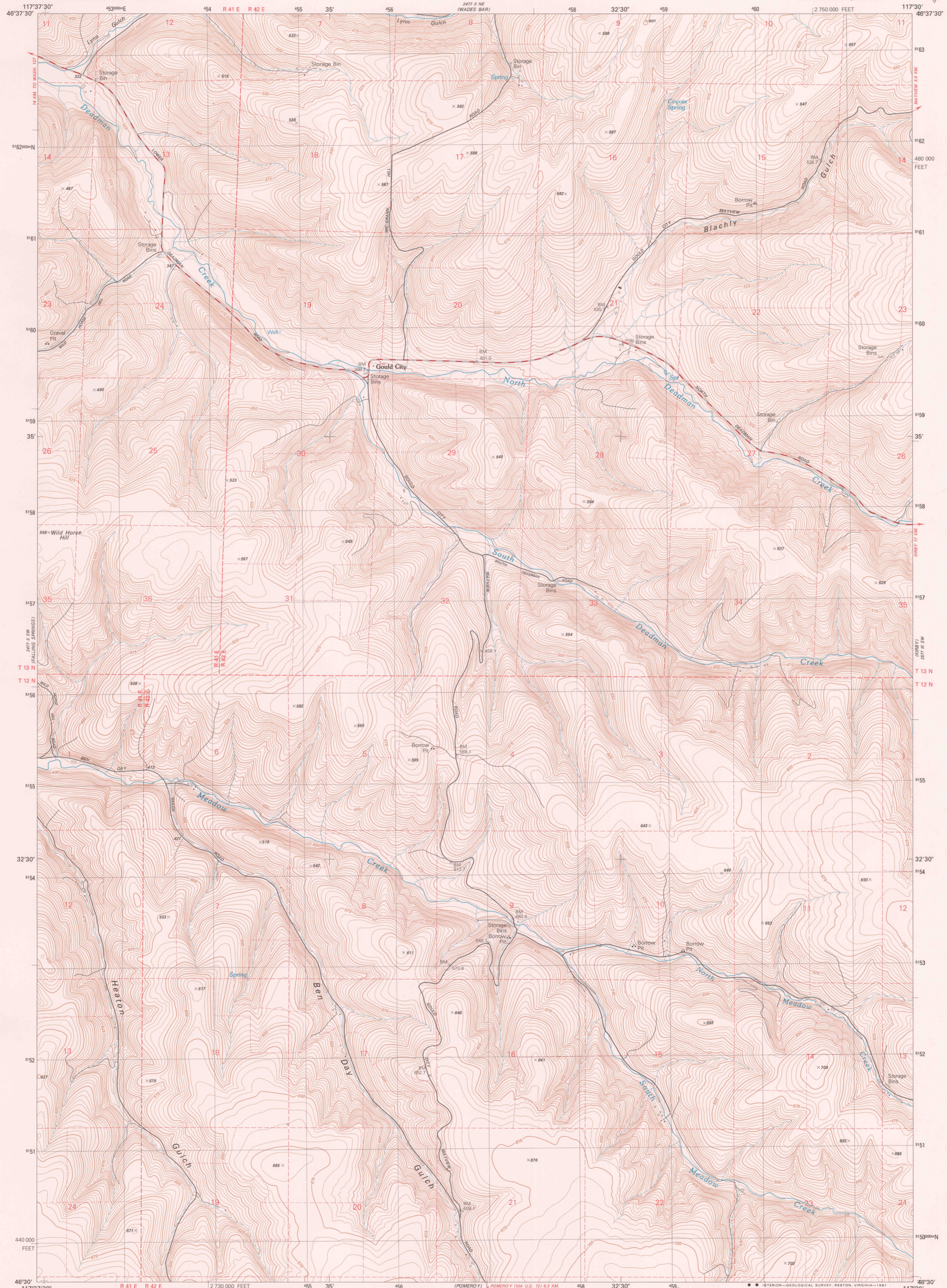


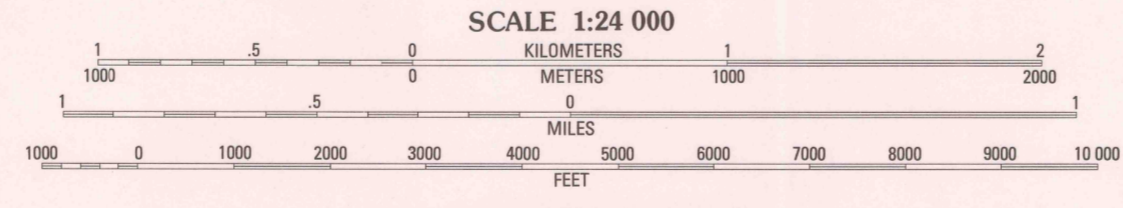
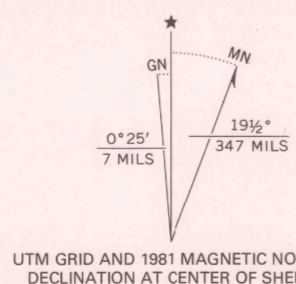
UNITED STATES  
DEPARTMENT OF THE INTERIOR  
GEOLOGICAL SURVEY

GOULD CITY QUADRANGLE  
WASHINGTON-GARFIELD CO.  
7.5 MINUTE SERIES (TOPOGRAPHIC)  
SE 1/4 PENAWAWA 15' QUADRANGLE



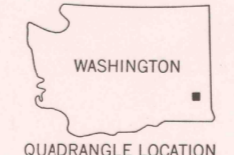
Produced by the United States Geological Survey

Control by USGS, NOS/NOAA  
Compiled by photogrammetric methods from aerial photographs taken 1975. Field checked 1976  
Map edited 1981  
Projection and 1000-meter grid, zone 11  
Universal Transverse Mercator  
10,000-foot grid ticks based on Washington coordinate system, south zone, 1927 North American Datum  
To place on the predicted North American Datum 1983 move the projection lines 17 meters north and 80 meters east as shown by dashed corner ticks  
Fine red dashed lines indicate selected fence and field lines where generally visible on aerial photographs  
This information is unchecked



CONTOUR INTERVAL 5 METERS  
NATIONAL GEODETIC VERTICAL DATUM OF 1929

THIS MAP COMPLIES WITH NATIONAL MAP ACCURACY STANDARDS  
FOR SALE BY U. S. GEOLOGICAL SURVEY, DENVER, COLORADO 80225, OR RESTON, VIRGINIA 22092  
A FOLDER DESCRIBING TOPOGRAPHIC MAPS AND SYMBOLS IS AVAILABLE ON REQUEST



ROAD CLASSIFICATION

Primary highway, hard surface	Light-duty road, hard or improved surface
Secondary highway, hard surface	Unimproved road
Interstate Route	U. S. Route
	State Route

CONTOURS AND ELEVATIONS IN METERS

GOULD CITY, WASH.  
SE 1/4 PENAWAWA 15' QUADRANGLE  
N4630-W11730/7.5

1981  
DMA 2477 II SE--SERIES V891

USGS  
HISTORICAL FILE  
NATIONAL MAPPING DIVISION

1850  
JUN 3 1981