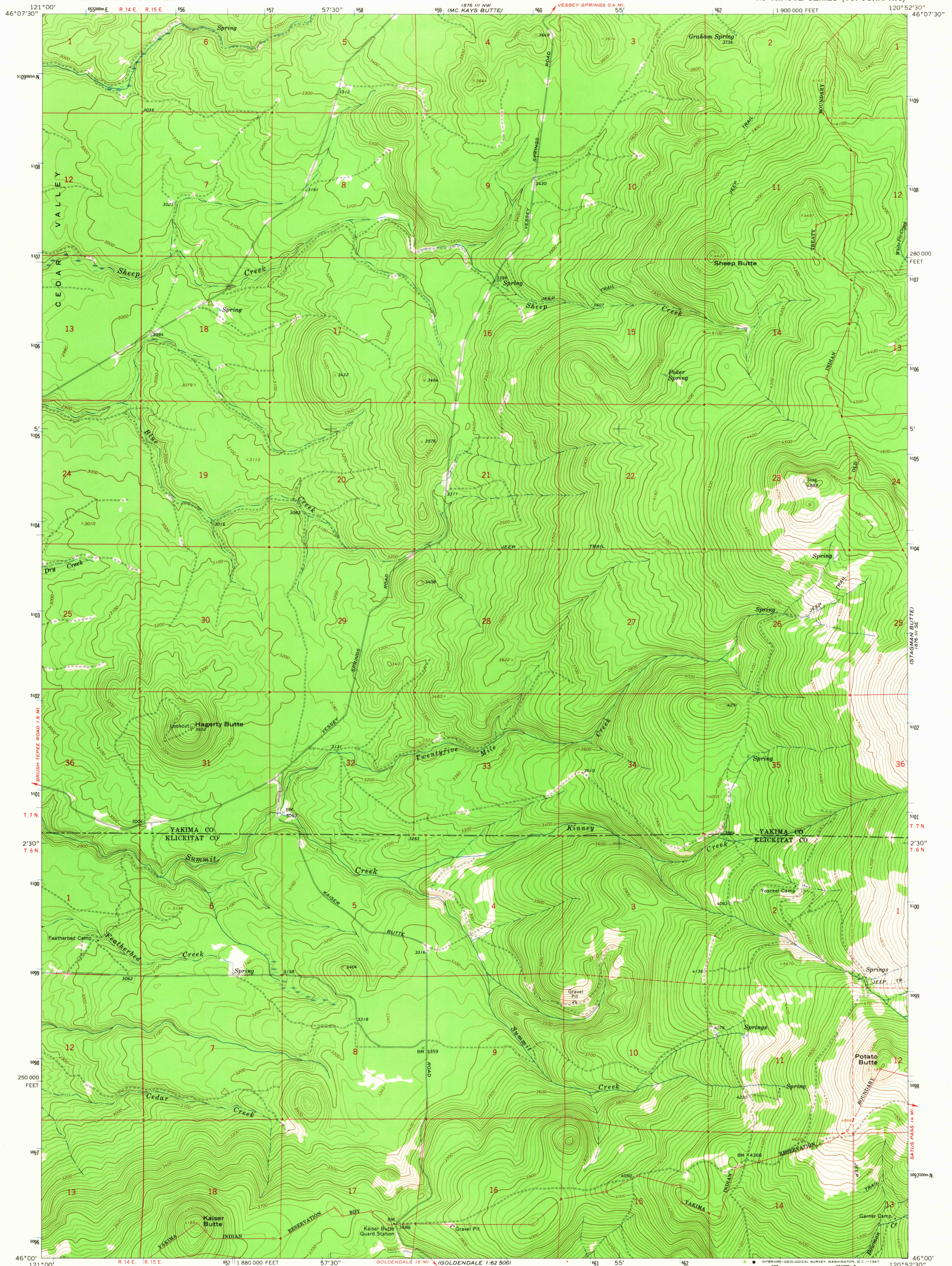


1876 III SW
ICAMAS PATCH



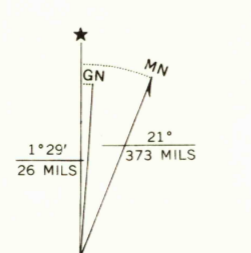
Mapped, edited, and published by the Geological Survey

Control by USGS and USC&GS

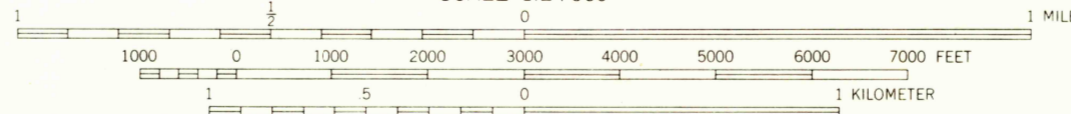
Topography by photogrammetric methods from aerial photographs taken 1964. Field checked 1965

Polyconic projection. 1927 North American datum 10,000-foot grid based on Washington coordinate system, south zone

1000-meter Universal Transverse Mercator grid ticks, zone 10, shown in blue



UTM GRID AND 1965 MAGNETIC NORTH DECLINATION AT CENTER OF SHEET



SCALE 1:24,000

CONTOUR INTERVAL 20 FEET

DATUM IS MEAN SEA LEVEL



QUADRANGLE LOCATION

ROAD CLASSIFICATION
Light-duty ——— Unimproved dirt - - - - -

U.S.G.S.

HAGERTY BUTTE, WASH.
N4600-W12052.5/7.5

1965

AMS 1876 III SW—SERIES V891

THIS MAP COMPLIES WITH NATIONAL MAP ACCURACY STANDARDS
FOR SALE BY U.S. GEOLOGICAL SURVEY, DENVER, COLORADO 80225, OR WASHINGTON, D. C. 20242
A FOLDER DESCRIBING TOPOGRAPHIC MAPS AND SYMBOLS IS AVAILABLE ON REQUEST

FILE COPY
TOPOGRAPHIC DIVISION

2715
APR 12 1967