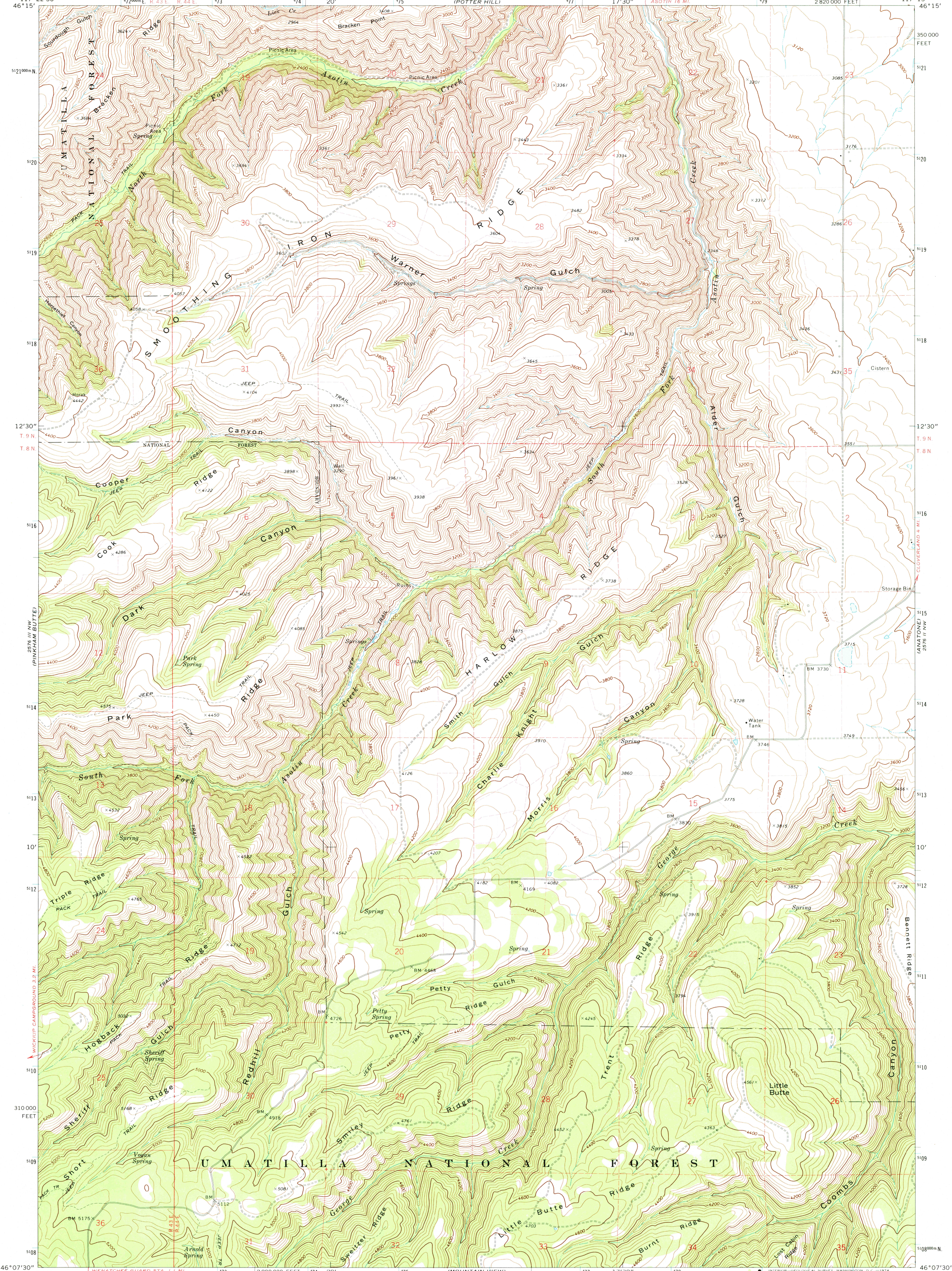
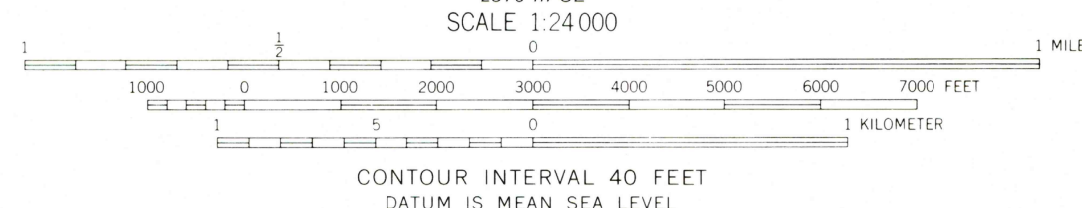
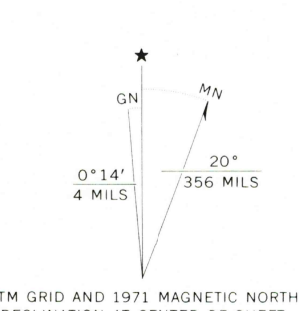


2576 III SW  
(POTTER HILL)

2576 III SW  
(ROCKPILE CREEK)



Mapped, edited, and published by the Geological Survey  
Control by USGS and USC&GS  
Topography by photogrammetric methods from aerial  
photographs taken 1970. Field checked 1971  
Projection and 10,000-foot grid ticks: Washington coordinate  
system, south zone (Lambert conformal conic)  
1000-meter Universal Transverse Mercator grid ticks,  
zone 11, shown in blue. 1927 North American datum  
Fine red dashed lines indicate selected fence lines



**ROAD CLASSIFICATION**

Primary highway, hard surface	Light-duty road, hard or improved surface
Secondary highway, hard surface	Unimproved road
Interstate Route	U.S. Route
	State Route

WASHINGTON  
QUADRANGLE LOCATION

HARLOW RIDGE, WASH.  
NE/4 SADDLE BUTTE 15' QUADRANGLE  
N4607.5—W11715/7.5

USGS  
Historical File  
Topographic Division

1971  
AMS 2576 III NE—SERIES V891

THIS MAP COMPLIES WITH NATIONAL MAP ACCURACY STANDARDS  
FOR SALE BY U.S. GEOLOGICAL SURVEY, DENVER, COLORADO 80225, OR WASHINGTON D. C. 20242  
A FOLDER DESCRIBING TOPOGRAPHIC MAPS AND SYMBOLS IS AVAILABLE ON REQUEST

FEB 5 1975  
3900  
FIELDS SPRING  
(2576 III SW)