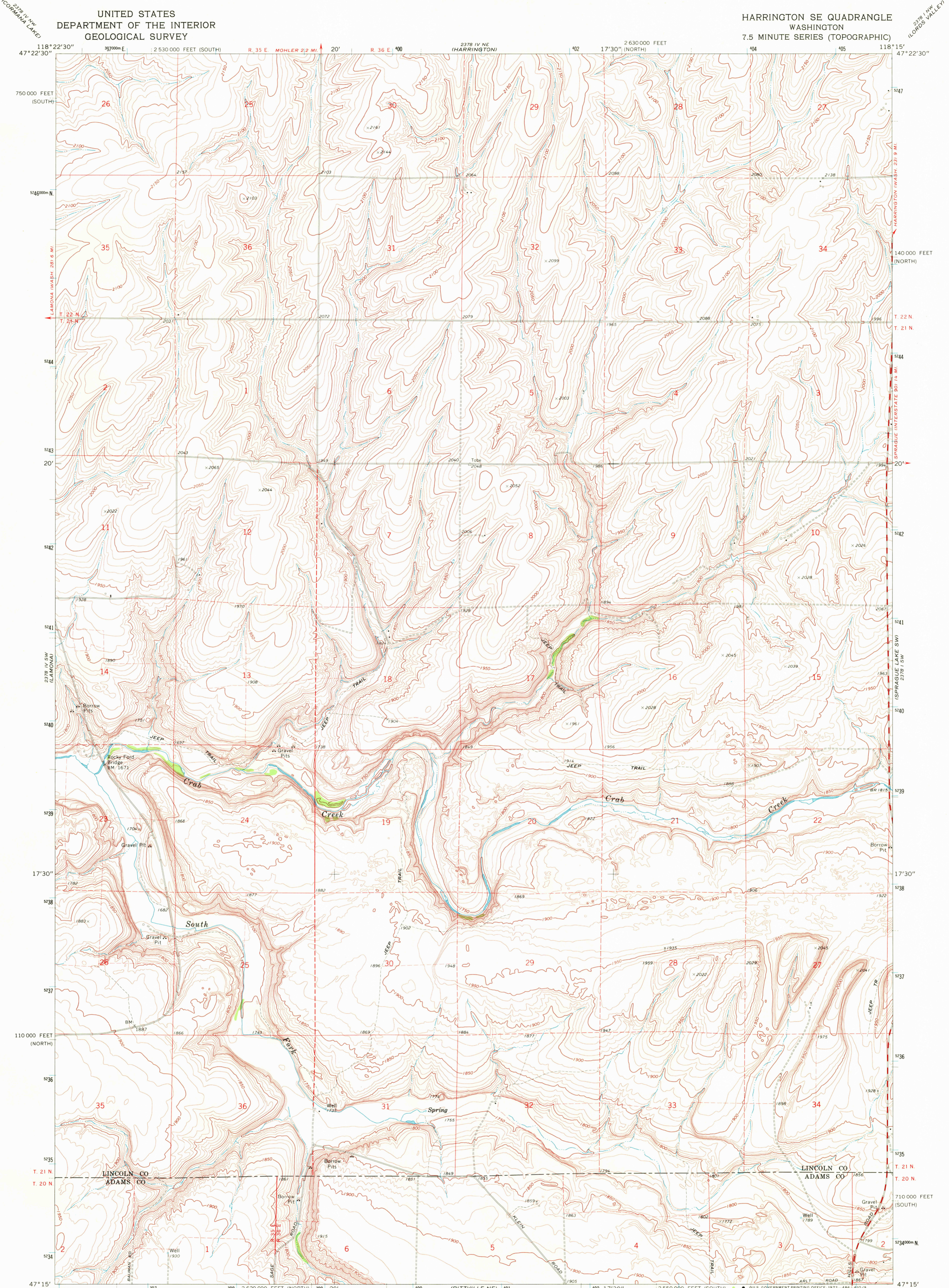


UNITED STATES  
DEPARTMENT OF THE INTERIOR  
GEOLOGICAL SURVEY

HARRINGTON SE QUADRANGLE  
WASHINGTON  
7.5 MINUTE SERIES (TOPOGRAPHIC)



118°22'30" 47°22'30" 750 000 FEET (SOUTH) 2 530 000 FEET (SOUTH) R. 35 E. MOHLER 2.2 MI. 20' R. 36 E. 400 2378 IV NE (HARRINGTON) 402 17°30" (NORTH) 2 630 000 FEET 404 405 118°15' 47°22'30"

524600m N

5244 T. 22 N. T. 21 N.

5243 20'

5242

5241

2378 IV SW (LAMONVA) 17°30" 5240

5239

5238

5237

110 000 FEET (NORTH) 5236

5235

T. 21 N. T. 20 N.

5234

47°15' 118°22'30" 2 620 000 FEET (NORTH) 199 20' 400 (RITZVILLE NE) 401 17°30" 2 550 000 FEET (SOUTH) 402 118°15' 47°15'

2378 I NW (LORDS VALLEY) 5247

140 000 FEET (NORTH)

HARRINGTON WASH. 231 9 MI.

5244 SPRAGUE INTERSTATE 901 14 MI.

5242

5241

5240

5239

5238

5237

5236

5235

5234

5233

5232

5231

5230

5229

5228

5227

5226

5225

5224

5223

5222

5221

5220

5219

5218

5217

5216

5215

5214

5213

5212

5211

5210

5209

5208

5207

5206

5205

5204

5203

5202

5201

5200

5199

5198

5197

5196

5195

5194

5193

5192

5191

5190

5189

5188

5187

5186

5185

5184

5183

5182

5181

5180

5179

5178

5177

5176

5175

5174

5173

5172

5171

5170

5169

5168

5167

5166

5165

5164

5163

5162

5161

5160

5159

5158

5157

5156

5155

5154

5153

5152

5151

5150

5149

5148

5147

5146

5145

5144

5143

5142

5141

5140

5139

5138

5137

5136

5135

5134

5133

5132

5131

5130

5129

5128

5127

5126

5125

5124

5123

5122

5121

5120

5119

5118

5117

5116

5115

5114

5113

5112

5111

5110

5109

5108

5107

5106

5105

5104

5103

5102

5101

5100

5099

5098

5097

5096

5095

5094

5093

5092

5091

5090

5089

5088

5087

5086

5085

5084

5083

5082

5081

5080

5079

5078

5077

5076

5075

5074

5073

5072

5071

5070

5069

5068

5067

5066

5065

5064

5063

5062

5061

5060

5059

5058

5057

5056

5055

5054

5053

5052

5051

5050

5049

5048

5047

5046

5045

5044

5043

5042

5041

5040

5039

5038

5037

5036

5035

5034

5033

5032

5031

5030

5029

5028

5027

5026

5025

5024

5023

5022

5021

5020

5019

5018

5017

5016

5015

5014

5013

5012

5011

5010

5009

5008

5007

5006

5005

5004

5003

5002

5001

5000

4999

4998

4997

4996

4995

4994

4993

4992

4991

4990

4989

4988

4987

4986

4985

4984

4983

4982

4981

4980

4979

4978

4977

4976

4975

4974

4973

4972

4971

4970

4969

4968

4967

4966

4965

4964

4963

4962

4961

4960

4959

4958

4957

4956

4955

4954

4953

4952

4951

4950

4949

4948

4947

4946

4945

4944

4943

4942

4941

4940

4939

4938

4937

4936

4935

4934

4933

4932

4931

4930

4929

4928

4927

4926

4925

4924

4923

4922

4921

4920

4919

4918

4917

4916

4915

4914

4913

4912

4911

4910

4909

4908

4907

4906

4905

4904

4903

4902

4901

4900

4899

4898

4897

4896

4895

4894

4893

4892

4891

4890

4889

4888

4887

4886

4885

4884

4883

4882

4881

4880

4879

4878

4877

4876

4875

4874

4873

4872

4871

4870

4869

4868

4867

4866

4865

4864

4863

4862

4861

4860

4859

4858

4857

4856

4855

4854

4853

4852

4851

4850

4849

4848

4847

4846

4845

4844

4843

4842

4841

4840

4839

4838

4837

4836

4835

4834

4833

4832

4831

4830

4829

4828

4827

4826

4825

4824

4823

4822

4821

4820

4819

4818

4817

4816

4815

4814

4813

4812

4811

4810

4809

4808

4807

4806

4805

4804

4803

4802

4801

4800

4799

4798

4797

4796

4795

4794

4793

4792

4791

4790

4789

4788

4787

4786

4785

4784

4783

4782

4781

4780

4779

4778

4777

4776

4775

4774

4773

4772

4771

4770

4769

4768

4767

4766

4765

4764

4763

4762

4761

4760

4759

4758

4757

4756

4755

4754

4753

4752

4751

4750

4749

4748

4747

4746

4745

4744

4743

4742

4741

4740

4739

4738

4737

4736

4735

4734

4733

4732

4731

4730

4729

4728

4727

4726

4725

4724

4723

4722

4721

4720

4719

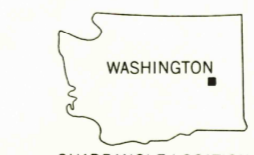
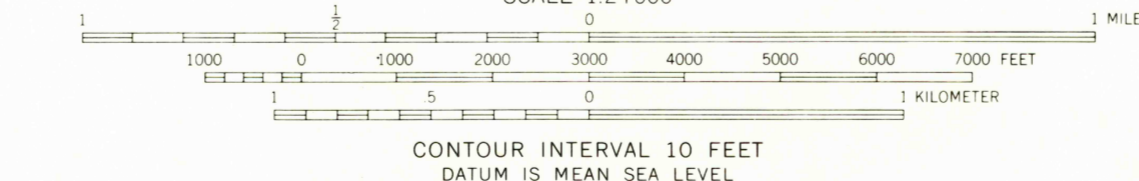
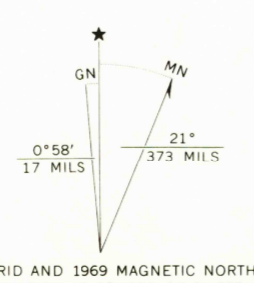
4718

4717

4716

4715

Mapped, edited, and published by the Geological Survey  
Control by USGS and USC&GS  
Topography by photogrammetric methods from aerial photographs taken 1968. Field checked 1969  
Polyconic projection. 1927 North American datum  
10,000-foot grids based on Washington coordinate system, north and south zones  
1000-meter Universal Transverse Mercator grid ticks, zone 11, shown in blue  
Fine red dashed lines indicate selected fence lines



ROAD CLASSIFICATION

|                                 |   |
|---------------------------------|---|
| Primary highway, hard surface   | Light-duty road, hard or improved surface |
| Secondary highway, hard surface | Unimproved road                           |
| Interstate Route                | U. S. Route                               |
|                                 | State Route                               |

HARRINGTON SE, WASH.  
N4715--W11815/7.5

THIS MAP COMPLIES WITH NATIONAL MAP ACCURACY STANDARDS  
FOR SALE BY U. S. GEOLOGICAL SURVEY, DENVER, COLORADO 80225, OR WASHINGTON, D. C. 20242  
A FOLDER DESCRIBING TOPOGRAPHIC MAPS AND SYMBOLS IS AVAILABLE ON REQUEST

USGS HISTORICAL FILE  
TOPOGRAPHIC DIVISION  
2000  
50plm