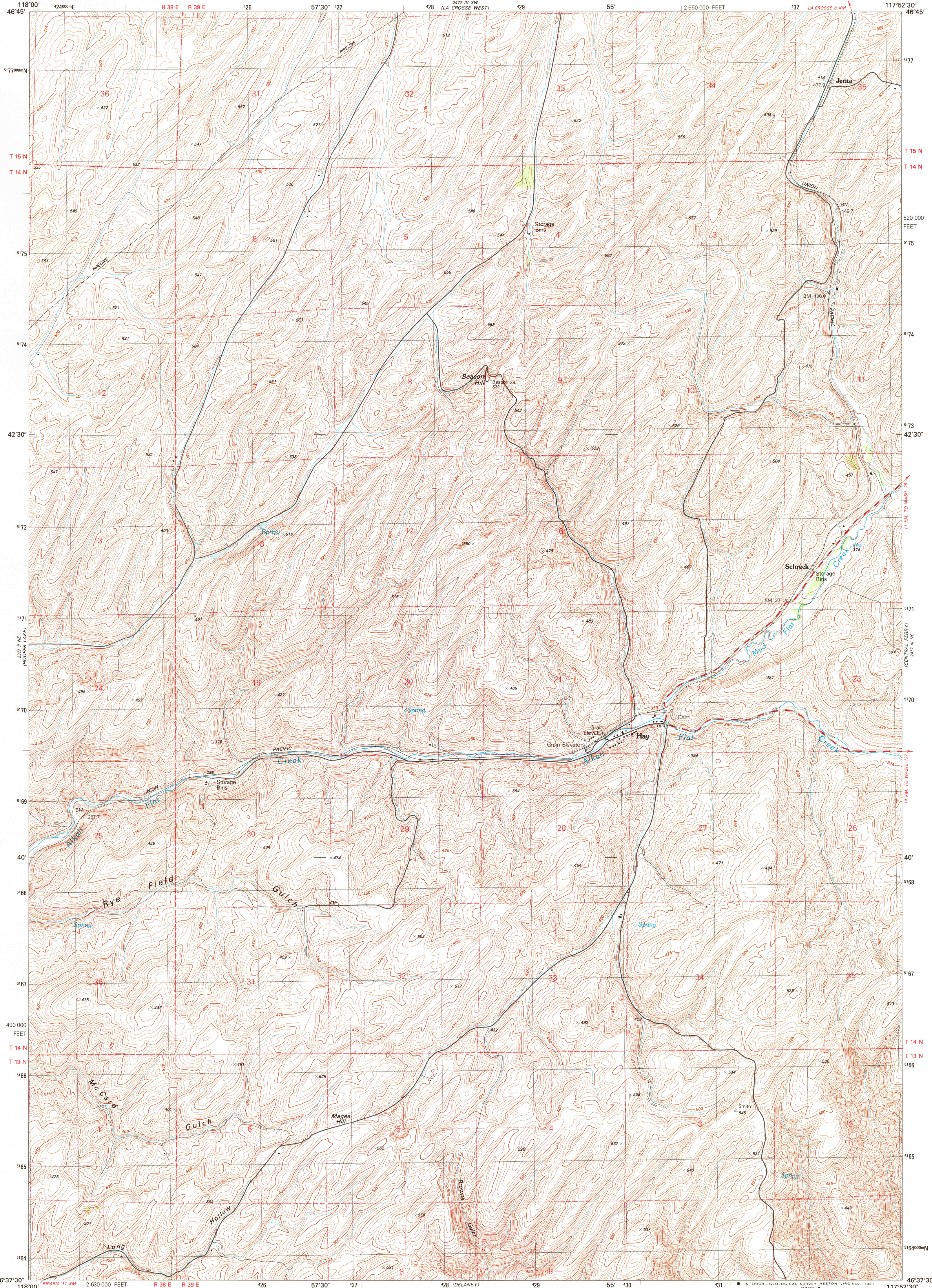
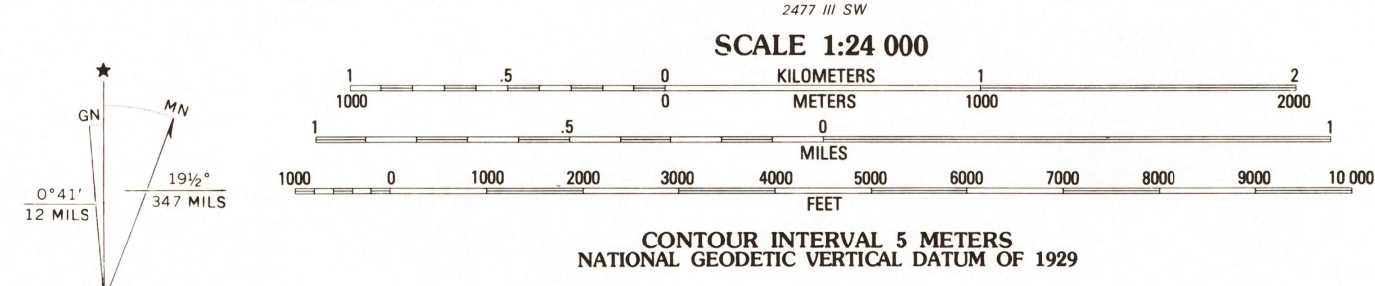


UNITED STATES
DEPARTMENT OF THE INTERIOR
GEOLOGICAL SURVEY

HAY QUADRANGLE
WASHINGTON-WHITMAN CO.
7.5 MINUTE SERIES (TOPOGRAPHIC)



Produced by the United States Geological Survey
Control by USGS and NOS/NOAA
Compiled by photogrammetric methods from aerial photographs taken 1975. Field checked 1976
Map edited 1981
Projection and 1000-meter grid, zone 11, Universal Transverse Mercator
10,000-foot grid ticks based on Washington coordinate system, south zone. 1927 North American Datum
To place on the predicted North American Datum 1983 move the projection lines 17 meters north and 81 meters east as shown by dashed corner ticks
Fine red dashed lines indicate selected fence and field lines where generally visible on aerial photographs
This information is unchecked



ROAD CLASSIFICATION

Primary highway, hard surface	Light-duty road, hard or improved surface
Secondary highway, hard surface	Unimproved road
Interstate Route	U. S. Route
	State Route



CONTOURS AND ELEVATIONS IN METERS

HAY, WASH.
NW 1/4 HAY 15 QUADRANGLE
N4637.5-W11752.5/7.5
1981
DMA 2477 III NW-SERIES V891

AUG 13 1981

USGS HISTORICAL FILE NATIONAL MAPPING DIV.

2000