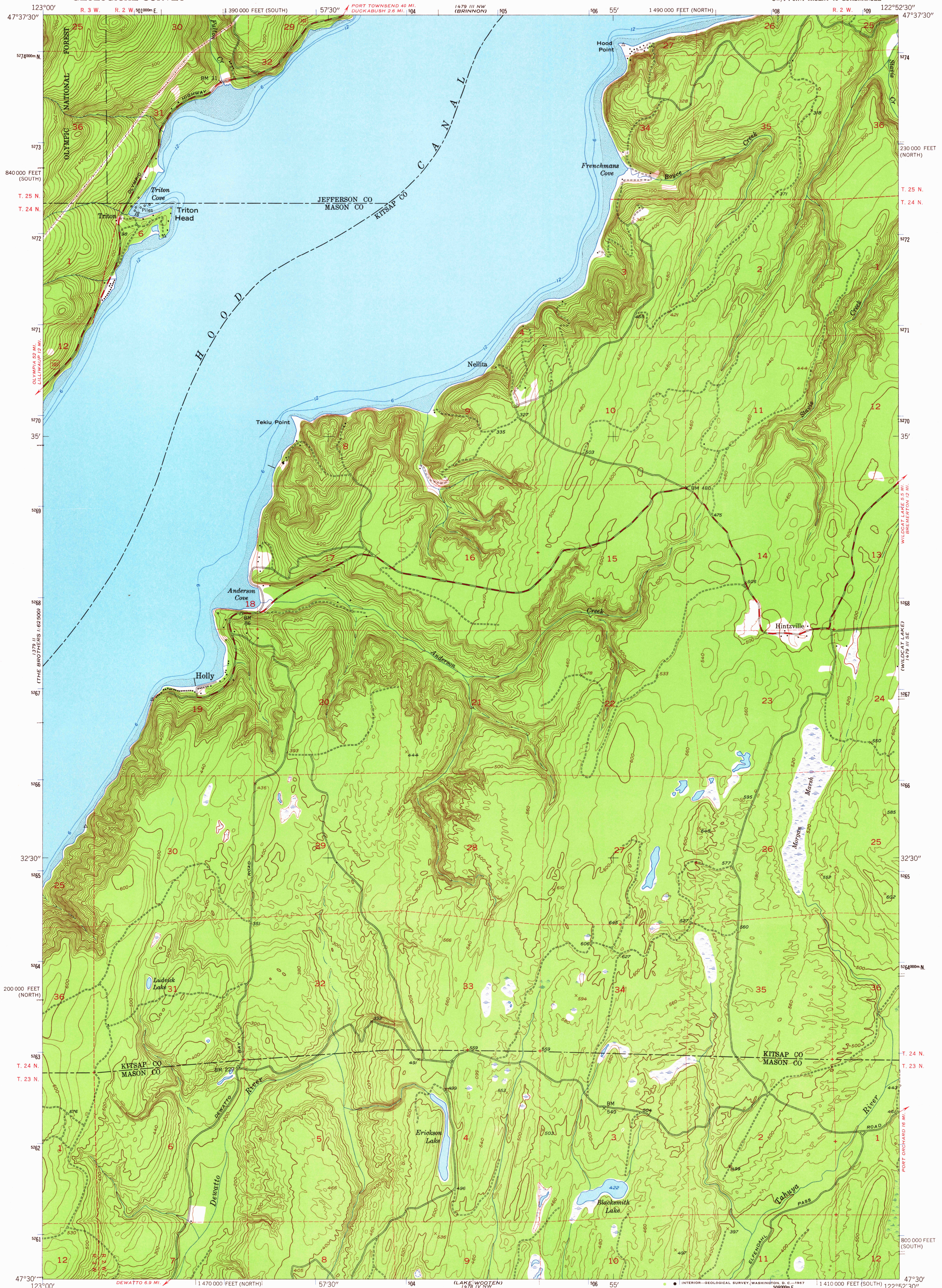
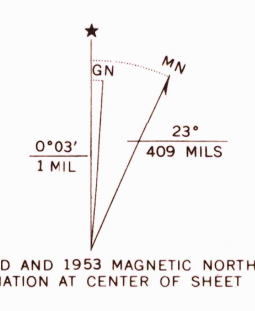


UNITED STATES
DEPARTMENT OF THE INTERIOR
GEOLOGICAL SURVEY

HOLLY QUADRANGLE
WASHINGTON
7.5 MINUTE SERIES (TOPOGRAPHIC)
SW/4 POINT MISERY 15' QUADRANGLE



Mapped, edited, and published by the Geological Survey
Control by USGS and USC&GS, and USCE
Topography from aerial photographs by Kesh plotter method
Aerial photographs taken 1951. Field check 1953
Hydrography compiled from USC&GS Charts 6450 and 6460
Polyconic projection. 1927 North American datum
10,000-foot grids based on Washington coordinate system,
north and south zones
Dashed land lines indicate approximate locations
Unchecked elevations are shown in brown
1000-meter Universal Transverse Mercator grid ticks,
zone 10, shown in blue



SCALE 1:24000
1 0 1000 2000 3000 4000 5000 6000 7000 FEET
1 0 5 10 KILOMETER
CONTOUR INTERVAL 20 FEET
DATUM IS MEAN SEA LEVEL
DEPTH CURVES IN FEET—DATUM IS MEAN LOWER LOW WATER
SHORELINE SHOWN REPRESENTS THE APPROXIMATE LINE OF MEAN HIGH WATER
THE AVERAGE RANGE OF TIDE IS APPROXIMATELY 9 FEET
FOR SALE BY U. S. GEOLOGICAL SURVEY, DENVER, COLORADO 80225 OR WASHINGTON, D. C. 20242
A FOLDER DESCRIBING TOPOGRAPHIC MAPS AND SYMBOLS IS AVAILABLE ON REQUEST

ROAD CLASSIFICATION
Heavy-duty 4 LANE 6 LANE Light-duty
Medium-duty 4 LANE 6 LANE Unimproved dirt
U. S. Route State Route
HOLLY, WASH.
SW/4 POINT MISERY 15' QUADRANGLE
N4730-W12252.5/7.5
1953
AMS 1479 III SW—SERIES Y891

U.S.G.S.
FILE COPY
TOPOGRAPHIC DIVISION
MAY 17 1967
2245