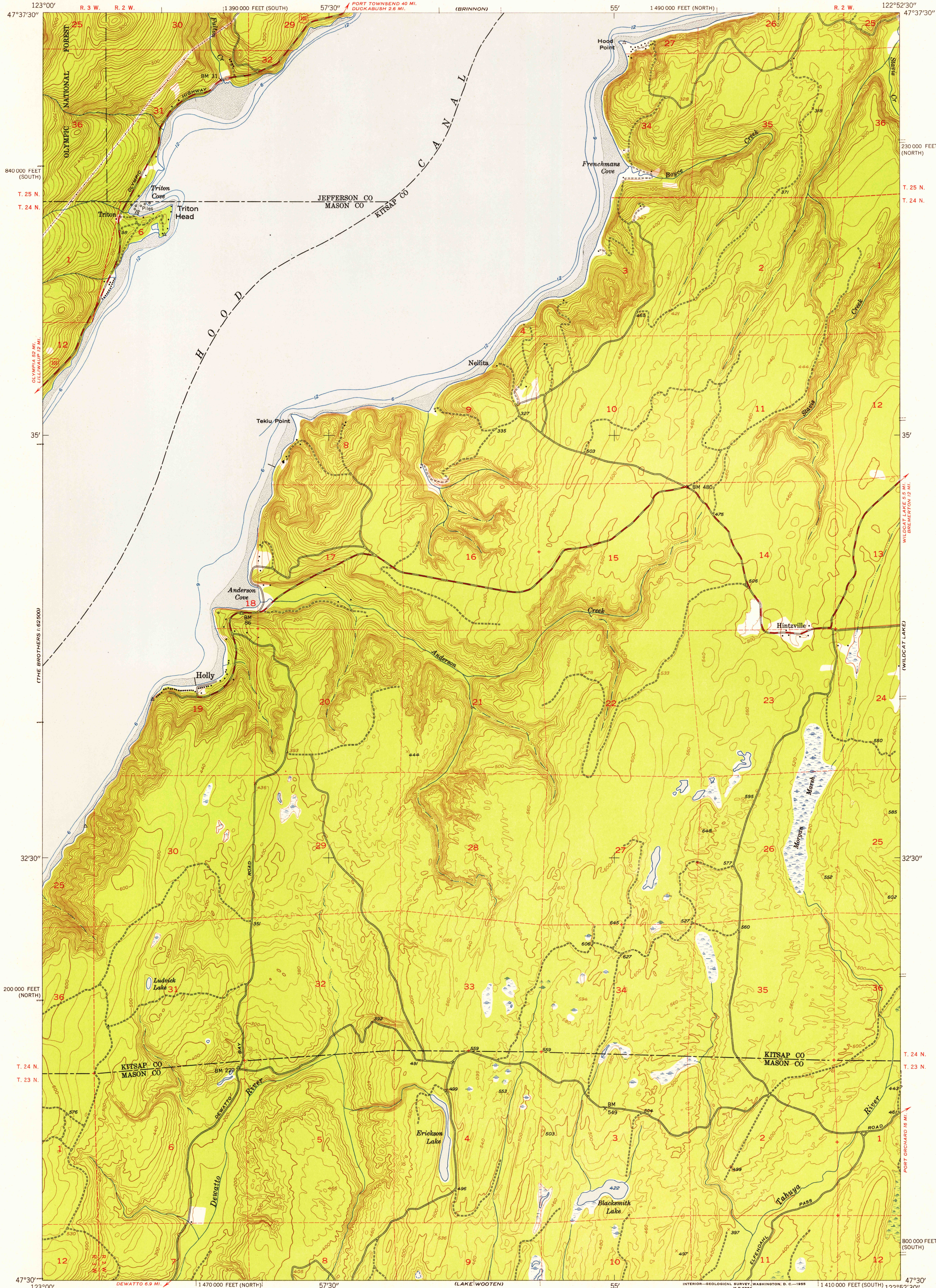


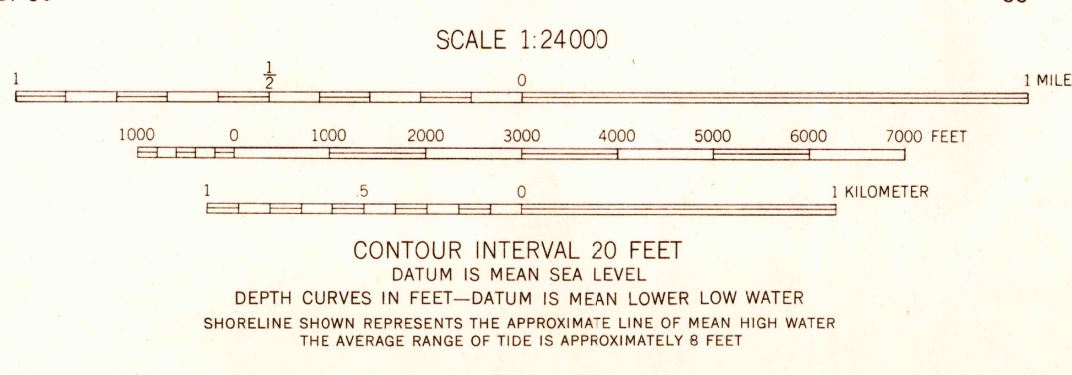
UNITED STATES
DEPARTMENT OF THE INTERIOR
GEOLOGICAL SURVEY

HOLLY QUADRANGLE
WASHINGTON
7.5 MINUTE SERIES (TOPOGRAPHIC)
SW 1/4 POINT MISERY 15' QUADRANGLE

U.S.G.S.
FILE COPY
TOPOGRAPHIC DIVISION



Maped, edited, and published by the Geological Survey
Control by USGS and USC&GS, and USCE
Topography from aerial photographs by Kelsh plotter method
Aerial photographs taken 1951. Field check 1953
Hydrography compiled from USC&GS Charts 6450 and 6460
Polyconic projection. 1927 North American datum
10,000-foot grids based on Washington coordinate system,
north and south zones
Dashed land lines indicate approximate locations
Unchecked elevations are shown in brown



ROAD CLASSIFICATION
Heavy-duty 4 LANE 6 LANE Light-duty
Medium-duty 4 LANE 6 LANE Unimproved dirt
U. S. Route State Route
HOLLY, WASH.
SW 1/4 POINT MISERY 15' QUADRANGLE
N 4730—W 12252.5/7.5
1953

U.S.G.S.
FILE COPY
TOPOGRAPHIC DIVISION