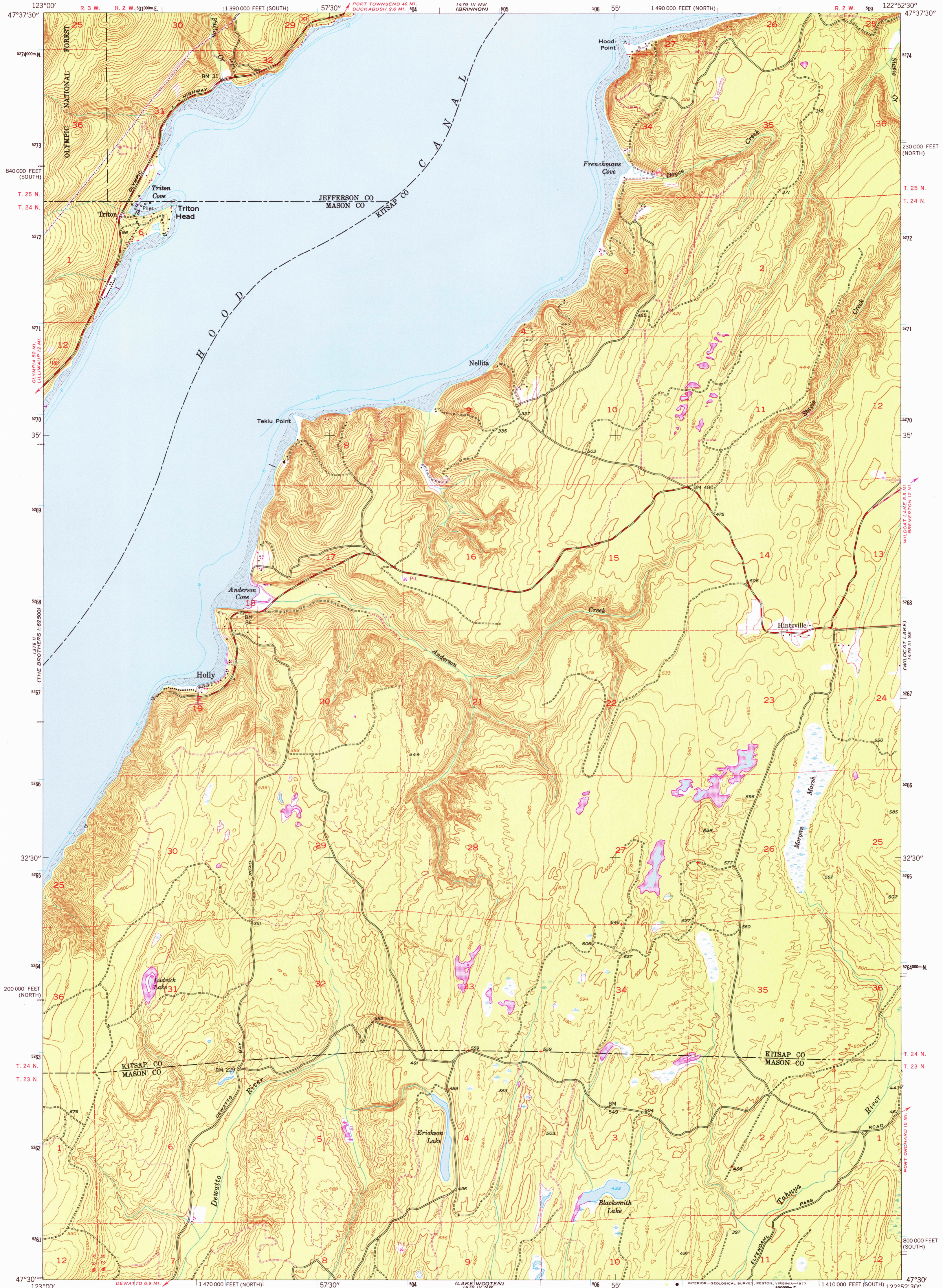


UNITED STATES
DEPARTMENT OF THE INTERIOR
GEOLOGICAL SURVEY

HOLLY QUADRANGLE
WASHINGTON
7.5 MINUTE SERIES (TOPOGRAPHIC)



Mapped, edited, and published by the Geological Survey

Control by USGS and USO&GS, and USCE

Topography from aerial photographs by Kesh plotter method

Aerial photographs taken 1951. Field check 1953

Hydrography compiled from USC&GS Charts 6450 and 6460

Polyconic projection. 1927 North American datum

10,000-foot grids based on Washington coordinate system,

north and south zones

Dashed land lines indicate approximate locations

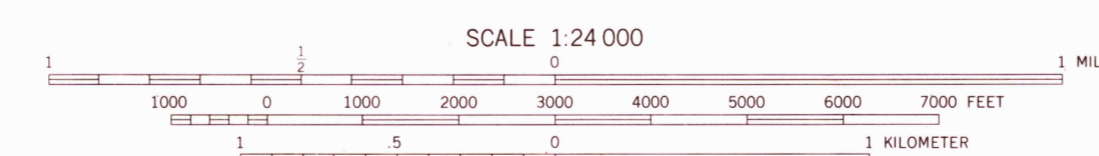
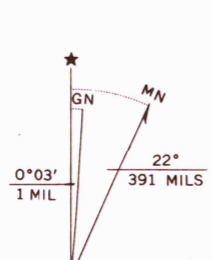
Unchecked elevations are shown in brown

1000-meter Universal Transverse Mercator grid ticks,

zone 10, shown in blue

Revisions shown in purple compiled from aerial photographs

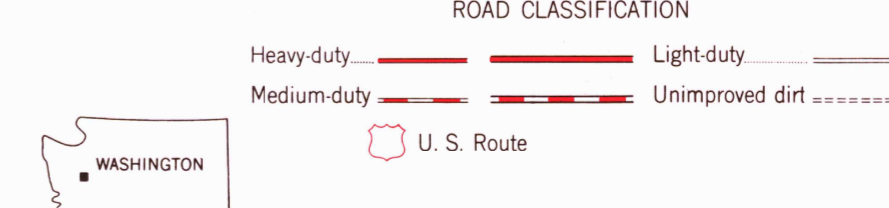
taken 1968. This information not field checked



CONTOUR INTERVAL 20 FEET
NATIONAL GEODETIC VERTICAL DATUM OF 1929
DEPTH CURVES IN FEET—DATUM IS MEAN LOWER LOW WATER
SHORELINE SHOWN REPRESENTS THE APPROXIMATE LINE OF MEAN HIGH WATER
THE AVERAGE RANGE OF TIDE IS APPROXIMATELY 6 FEET

FOR SALE BY U. S. GEOLOGICAL SURVEY, DENVER, COLORADO 80225, OR RESTON, VIRGINIA 22092

A FOLDER DESCRIBING TOPOGRAPHIC MAPS AND SYMBOLS IS AVAILABLE ON REQUEST



USGS
Historical File
Topographic Division

HOLLY, WASH.
N4730-W12252.517.5

1953
PHOTOREVISED 1968

AMS 1479 III SW—SERIES V891

MAR 23 1978

3450