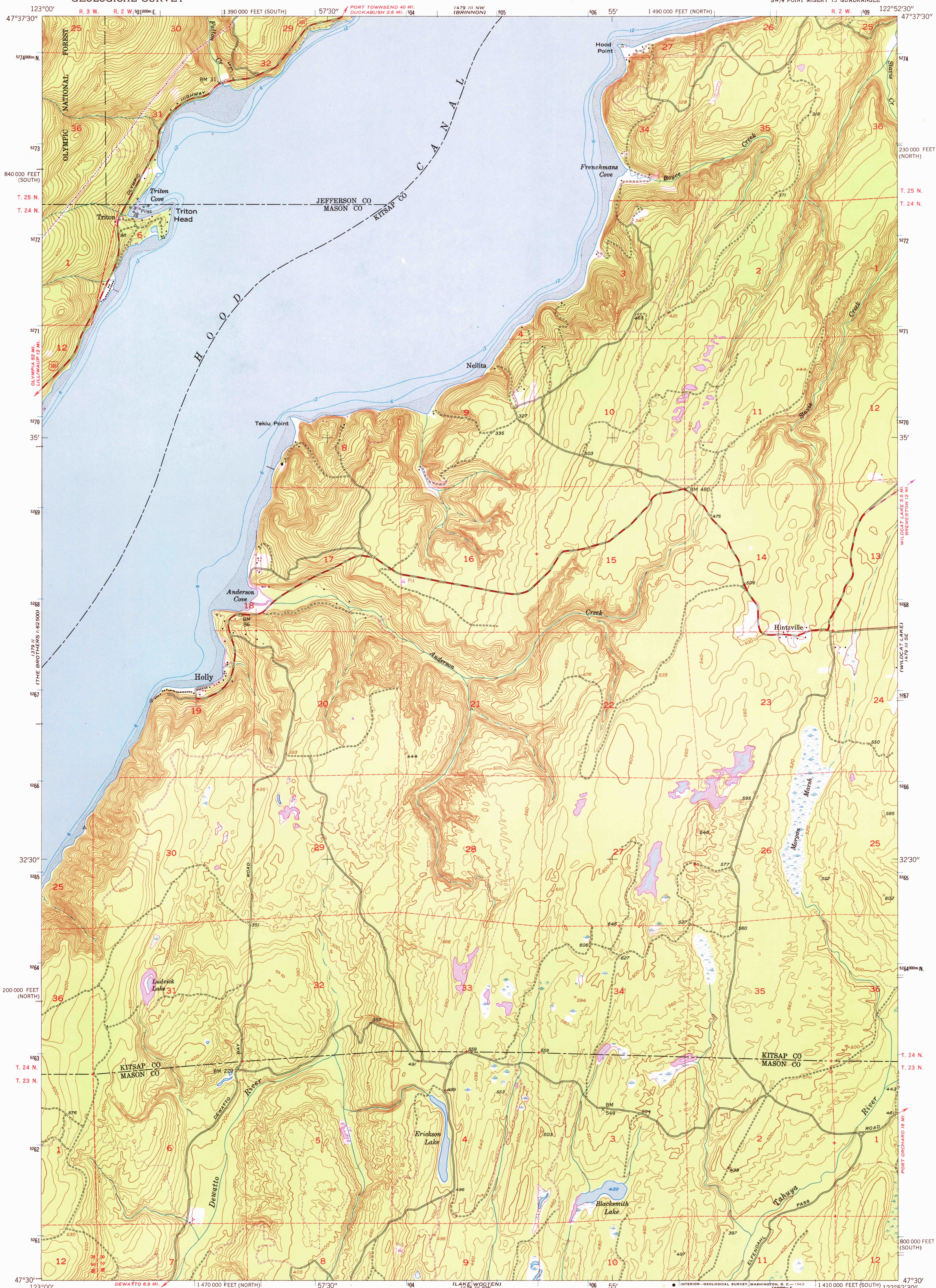
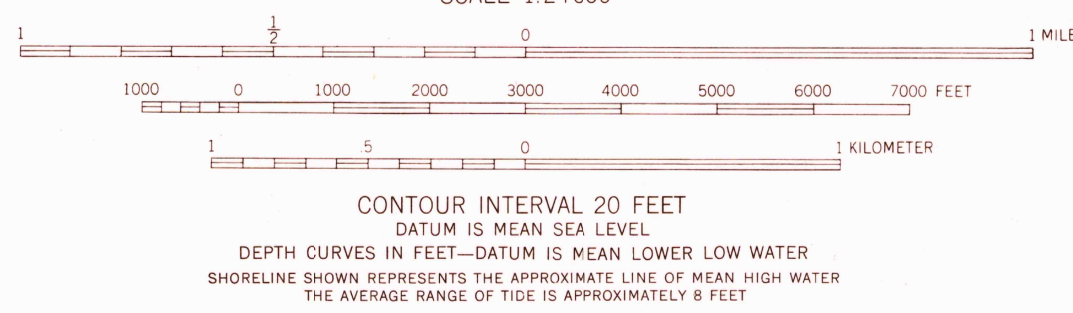
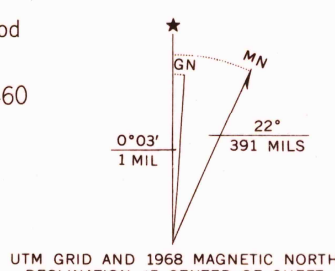


UNITED STATES  
DEPARTMENT OF THE INTERIOR  
GEOLOGICAL SURVEY

HOLLY QUADRANGLE  
WASHINGTON  
7.5 MINUTE SERIES (TOPOGRAPHIC)  
SW 1/4 POINT MISERY 15' QUADRANGLE



Maped, edited, and published by the Geological Survey  
Control by USGS and USC&GS, and USCE  
Topography from aerial photographs by Kelsh plotter method  
Aerial photographs taken 1951. Field check 1953  
Hydrography compiled from USC&GS Charts 6450 and 6460  
Polyconic projection. 1927 North American datum  
10,000-foot grids based on Washington coordinate system,  
north and south zones  
Dashed land lines indicate approximate locations  
Unchecked elevations are shown in brown  
1000-meter Universal Transverse Mercator grid ticks,  
zone 10, shown in blue  
Revisions shown in purple compiled from aerial photographs  
taken 1968. This information not field checked



ROAD CLASSIFICATION  
Heavy-duty ——— Light-duty ———  
Medium-duty ——— Unimproved dirt ———  
U. S. Route

HOLLY, WASH.  
SW 1/4 POINT MISERY 15' QUADRANGLE  
N4730-W12252.5/7.5

1953  
PHOTOGRAPHED 1968  
AMS 1479 III SW—SERIES V891

FOR SALE BY U. S. GEOLOGICAL SURVEY, DENVER, COLORADO 80225 OR WASHINGTON, D. C. 20242  
A FOLDER DESCRIBING TOPOGRAPHIC MAPS AND SYMBOLS IS AVAILABLE ON REQUEST

U.S.G.S.  
FILE COPY  
TOPOGRAPHIC DIVISION

2460  
OCT 8 1969