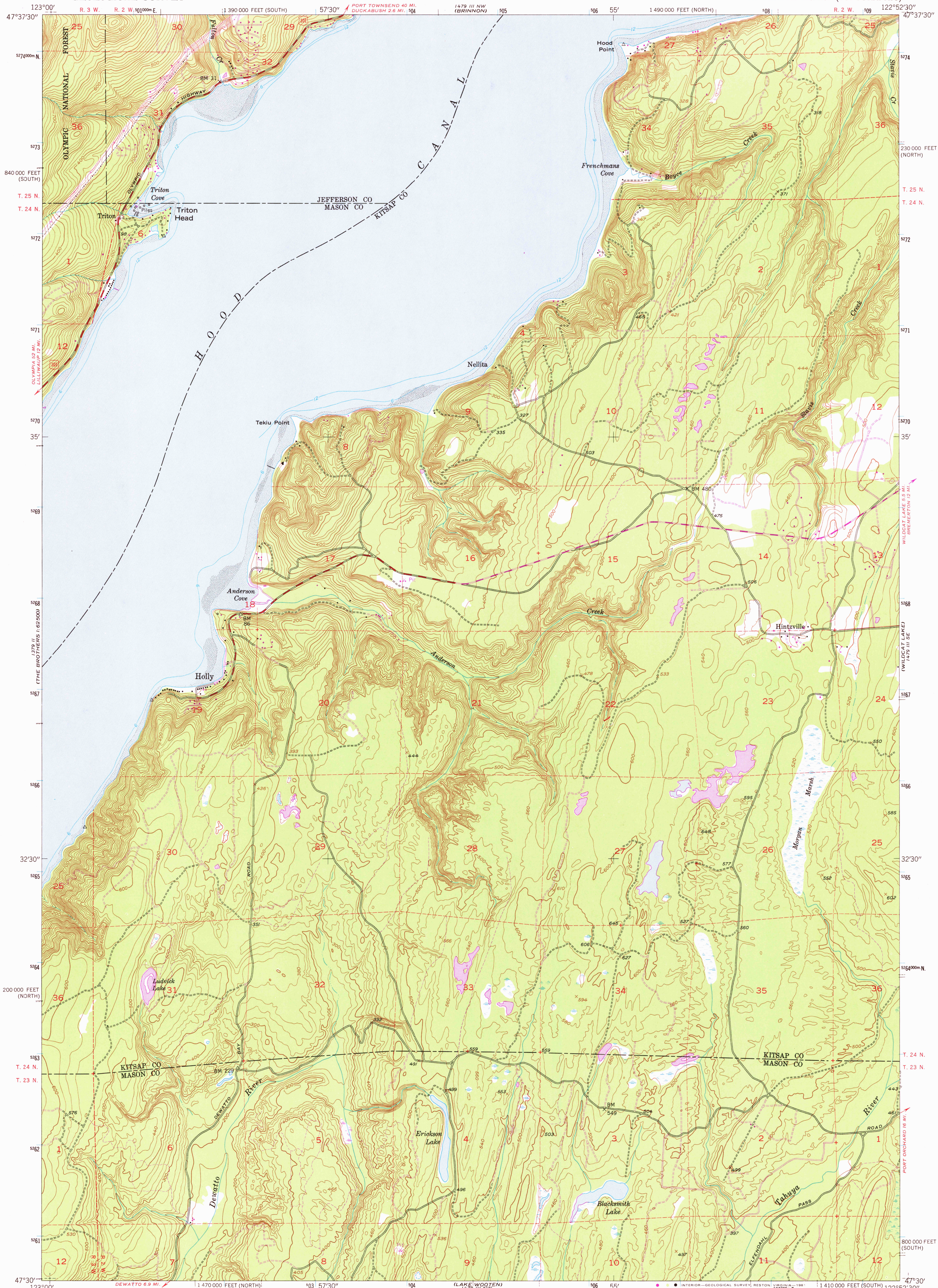


UNITED STATES  
DEPARTMENT OF THE INTERIOR  
GEOLOGICAL SURVEY

HOLLY QUADRANGLE  
WASHINGTON  
7.5 MINUTE SERIES (TOPOGRAPHIC)



Mapped, edited, and published by the Geological Survey

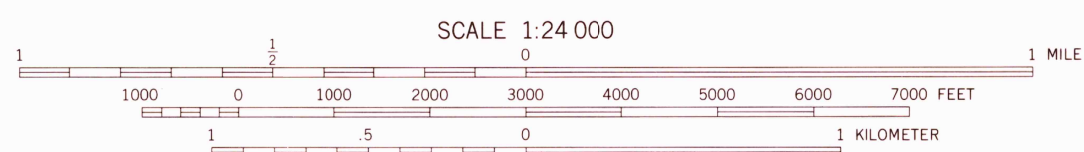
Control by USGS, NOS/NOAA, and USCE

Topography by photogrammetric methods from aerial photographs taken 1951. Field checked 1953

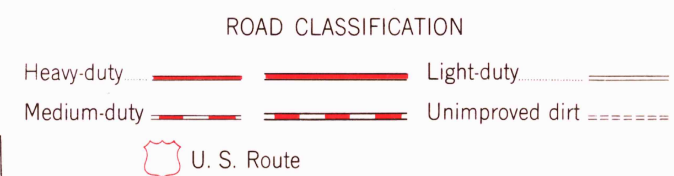
Selected hydrographic data compiled from NOS charts 6450 and 6460. This information is not intended for navigational purposes

Polyconic projection. 10,000-foot grid ticks based on Washington coordinate system, north and south zones 1000-meter Universal Transverse Mercator grid ticks, zone 10, shown in blue. 1927 North American Datum. To place on the predicted North American Datum 1983 move the projection lines 23 meters north and 95 meters east as shown by dashed corner ticks

There may be private inholdings within the boundaries of the National or State reservations shown on this map



NATIONAL GEODETIC VERTICAL DATUM OF 1929  
DEPTH CURVES IN FEET—DATUM IS MEAN LOWER LOW WATER  
THE RELATIONSHIP BETWEEN THE TWO DATUMS IS VARIABLE  
SHORELINE SHOWN REPRESENTS THE APPROXIMATE LINE OF MEAN HIGH WATER  
THE MEAN RANGE OF TIDE IS APPROXIMATELY 8 FEET  
FOR SALE BY U.S. GEOLOGICAL SURVEY, DENVER, COLORADO 80225, OR RESTON, VIRGINIA 22092  
A FOLDER DESCRIBING TOPOGRAPHIC MAPS AND SYMBOLS IS AVAILABLE ON REQUEST



Revisions shown in purple and woodland compiled from aerial photographs taken 1978 and other sources  
This information not field checked. Map edited 1981

HOLLY, WASH.  
N4730—W12252.5/7.5

1953  
PHOTOREVISED 1981  
DMA 1479 III SW—SERIES W891

USGS  
HISTORICAL FILE  
NATIONAL MAPPING DIVISION

SEP 29 1981  
2500